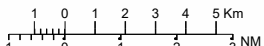
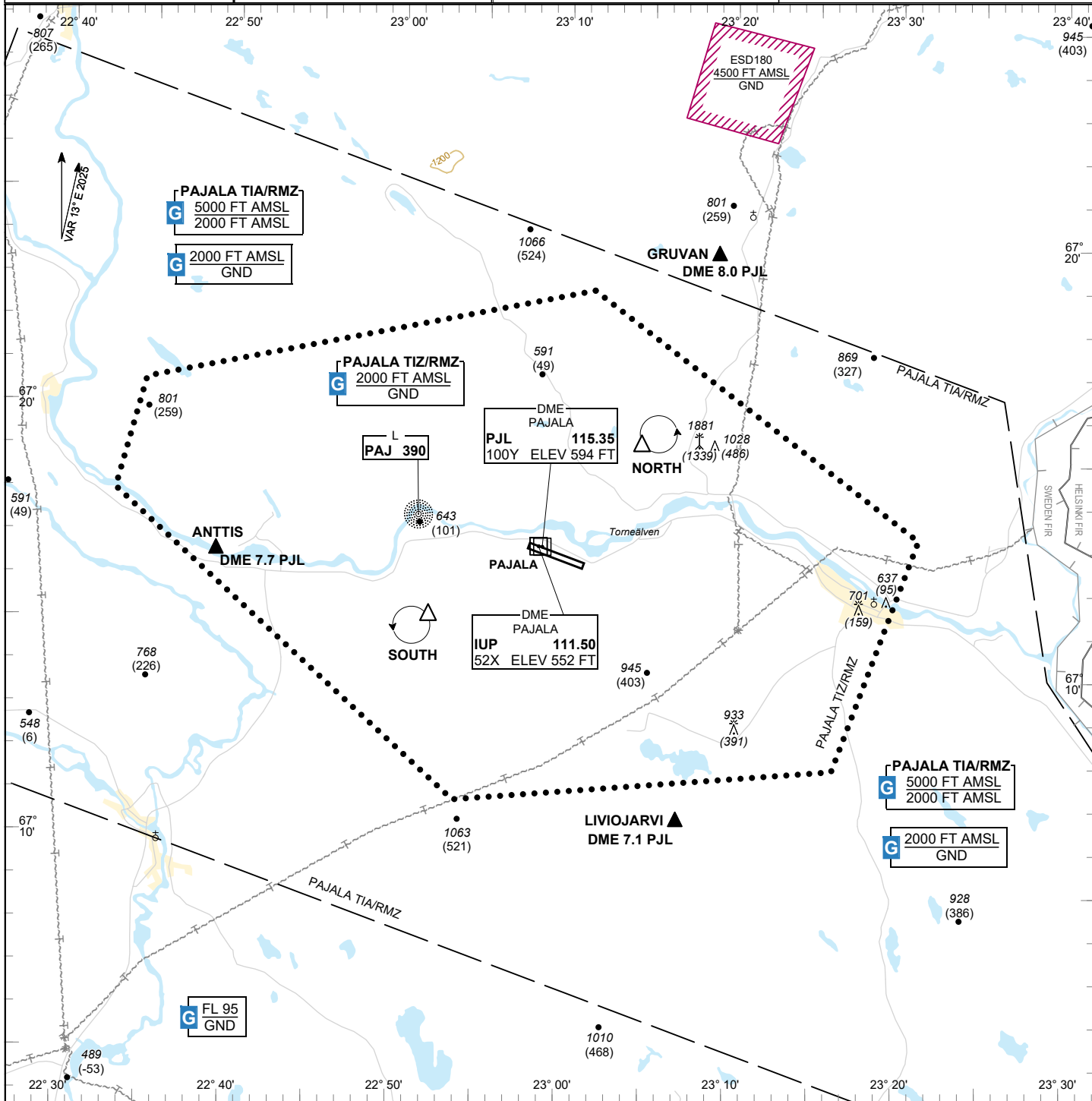


VISUAL APPROACH CHART - ICAO 1:250000 	AD ELEV 542 FEET ELEV and ALT in ft HGT in ft above AD ELEV TA 5000 AMSL	PAJALA INFORMATION 118.380	PAJALA SWEDEN
---	---	-----------------------------------	----------------------



Communication failure

- 1 SQUAWK 7600
- 2 Enter TIZ via GRUVAN – Holding NORTH or via LIVIOJARVI – Holding SOUTH at or below 1500 ft AMSL to traffic circuit. Transmit blind your intentions.
- 3 Flash LDG-lights

Remark

NIL

RWY NR	THR ELEV	PAPI (MEHT)
11	540.5 ft	Left/3.00° (50 ft)
29	541 ft	Left/3.00° (50 ft)

Legend

See GEN 2.3

Entry / exit point

GRUVAN	672109N 0231644E
LIVIOJARVI	670810N 0230930E
ANTTIS	671553N 0224409E

Holding

NORTH: Hold north west of mast, north east of point 671659N 0231031E

SOUTH: Hold over the swamp area, south west of point 671343N 0225622E

Border crossing point (See AIP Finland)

KESUN	673501N 0233238E
KOLUP	671956N 0234600E
PELOP	664812N 0235911E

CHANGE: VAR