

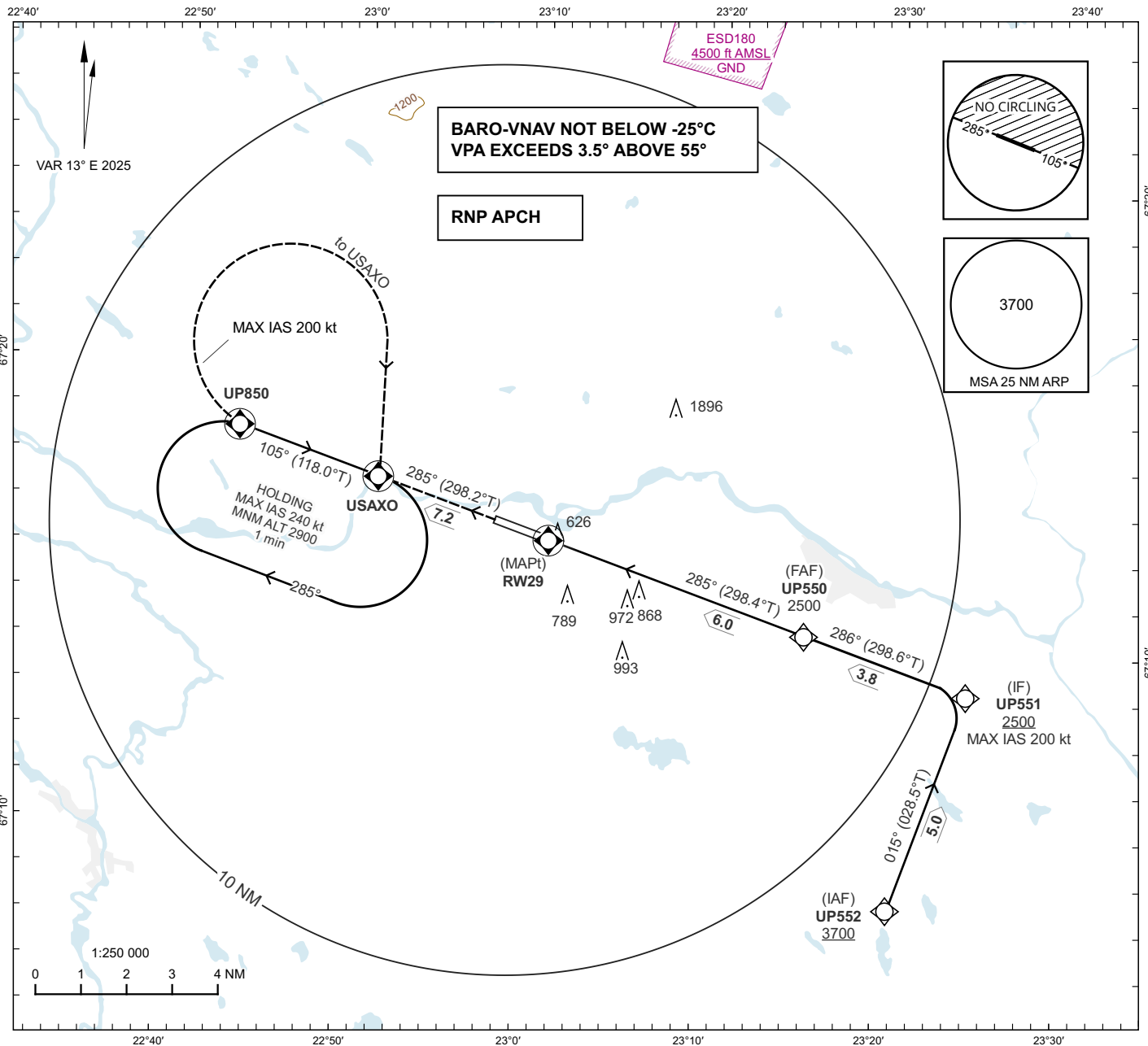
**INSTRUMENT
APPROACH
CHART - ICAO**

THR ELEV 541 ft AD ELEV 542 ft

PAJALA INFORMATION 118.380

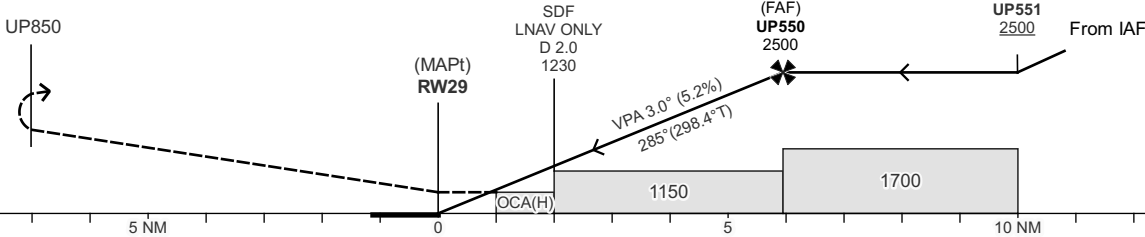
**PAJALA
RNP RWY 29
EGNOS CH 72298 E29A**

OCH are related to THR.
Circling OCH are related to AD ELEV.
BRG are MAG (True).
ALT, HGT and ELEV in ft.



TA 5000 ft AMSL RDH 50 ft

CLIMB TO UP850, TURN RIGHT
(MAX IAS 200 kt) TO USAXO
CLIMBING TO 2900 AND JOIN
USAXO HOLDING.



CAT of ACFT	OCA(H)				Final Approach	Distance FAF-MAPt 6.0 NM						
	A	B	C	D		Dist to RW29	2	3	4	5		
LPV	756(215)	768(227)	776(235)	787(246)	ALT	1230	1550	1860	2180			
LNAV/VNAV	756(215)	768(227)	776(235)	787(246)	GS	kt	80	100	120	140	160	180
LNAV	880(340)				Rate of descent	ft/min	425	530	635	745	850	955
Circling SW RWY	1090(550)	1270(730)	1390(850)	1390(850)								

CHANGE: VAR, OBST, MOCA, OCA(H), BARO-VNAV new, circling new, coding, editorial.

RNP RWY 29 via UP552

Path Term	Waypoint Identifier	Fly-over	Course °M(°T)	Dist (NM)	Turn Dir	Rest Alts (ft AMSL)	Speed Limits (kt)	VPA/RDH (°/ft)	Rec Navaid	Nav Spec
IF	UP552	-	-	-	-	+3700	-	-	-	RNP APCH
TF	UP551	-	015°(028.5°)	5.0	-	+2500	-200	-	-	RNP APCH

Path Term	Waypoint Identifier	Fly-over	Course °M(°T)	Dist (NM)	Turn Dir	Rest Alts (ft AMSL)	Speed Limits (kt)	VPA/RDH (°/ft)	Rec Navaid	Nav Spec
IF	UP551	-	-	-	-	+2500	-	-	-	RNP APCH
TF	UP550	-	286°(298.6°)	3.8	-	@2500	-	-	-	RNP APCH
TF	RW29	Y	285°(298.4°)	6.0	-	@591	-	-3.0/50	-	RNP APCH
TF	UP850	Y	285°(298.2°)	7.2	-	-	-	-	-	RNP APCH
DF	USAXO	Y	-	-	R	-	-200	-	-	RNP APCH

ESUP Holding USAXO

Path Term	Waypoint Identifier	Fly-over	Course °M(°T)	Dist (NM)	Turn Dir	Rest Alts (ft AMSL)	Speed Limits (kt)	VPA/RDH (°/ft)	Rec Navaid	Nav Spec
HM	USAXO	Y	105°(118.0°)	-	R	+2900	-240	-	-	RNP 1

FAS Data Block

RNP RWY 29

Input data

Operation Type	0
SBAS Provider	1 (EGNOS)
Airport Identifier	ESUP
Runway	29
Runway Letter	0 (None)
Approach Performance Designator	0
Route Indicator	
Reference Path Data Selector	0
Reference Path Identifier	E29A
LTP/FTP Latitude	671423.1945N
LTP/FTP Longitude	0230553.4545E
LTP/FTP Ellipsoidal Height (metres)	189.6
FPAP Latitude	671458.2875N
Delta FPAP Latitude (seconds)	35.0930
FPAP Longitude	0230304.4675E
Delta FPAP Longitude (seconds)	-168.9870
Threshold Crossing Height	50.0
TCH Units Selector	0 (feet)
Glidepath Angle (degrees)	3.00
Course Width (metres)	105.00
Length Offset (metres)	0
HAL (metres)	40.0
VAL (metres)	50.0

Output data

Data Block	10 10 15 13 05 1D 00 00 01 39 32 05 B5 2E DB 1C 5D A4 E9 09 68 1B 2A 12 01 CA D7 FA F4 01 2C 01 64 00 C8 FA 7F 2F 63 35
Calculated CRC Value	7F2F6335

Required Additional Data

ICAO Code	ES
LTP/FTP Orthometric Height (metres)	165.0