

AIP SVERIGE/SWEDEN

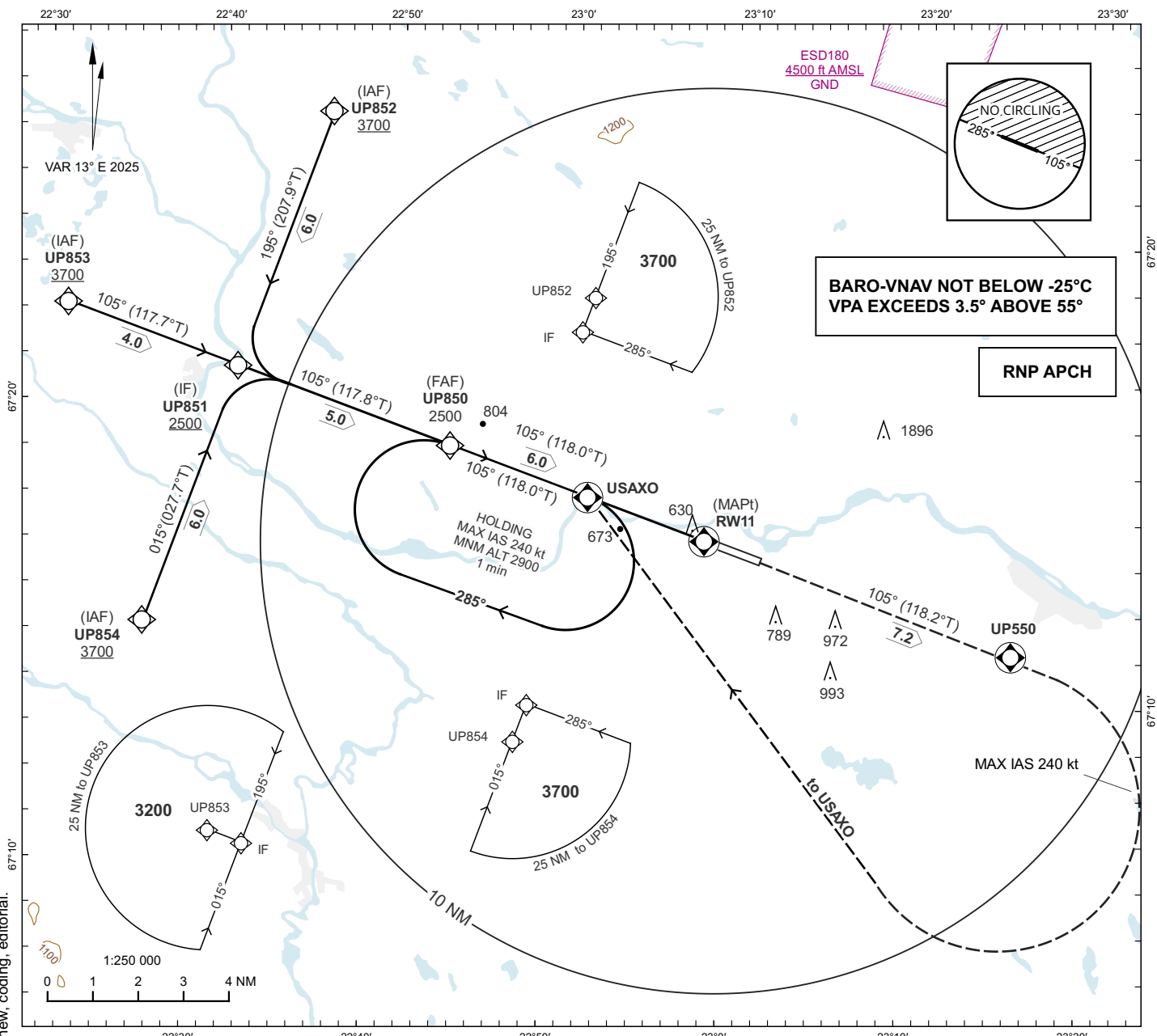
**INSTRUMENT
APPROACH
CHART - ICAO**

THR ELEV 540.5 ft AD ELEV 542 ft

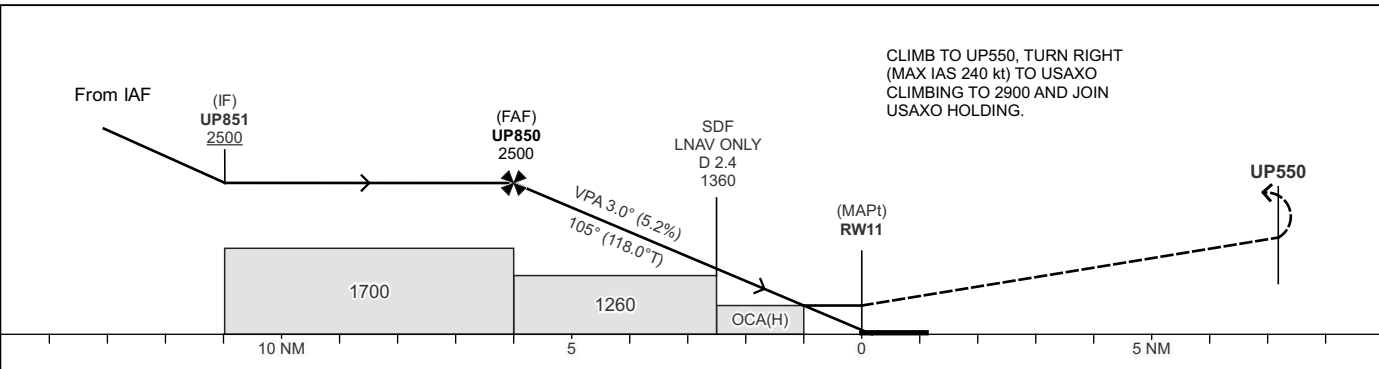
OCH are related to THR.
Circling OCH are related to AD ELEV.
BRG are MAG (True).
ALT, HGT and ELEV in ft.

PAJALA INFORMATION 118.380

**PAJALA
RNP RWY 11
EGNOS CH 88803 E11A**



TA 5000 ft AMSL RDH 50 ft



CAT of ACFT	OCA(H)				Final Approach	Distance FAF-MAPt 6.0 NM						
	A	B	C	D		Dist to RW11	5	4	3	2		
LPV	760(220)	773(233)	781(241)	791(251)	ALT	2180	1860	1550	1230			
LNAV/VNAV	760(220)	773(233)	781(241)	791(251)	GS	kt	80	100	120	140	160	180
LNAV	920(380)				Rate of descent	ft/min	425	530	635	745	850	955
Circling SW RWY	1090(550)	1270(730)	1390(850)	1390(850)								

CHANGE: VAR, OBST, TAA new, MOCA, OCA(H), BARO-VNAV new, circling new, coding, editorial.

RNP RWY 11 via UP852

Path Term	Waypoint Identifier	Fly-over	Course °M(°T)	Dist (NM)	Turn Dir	Rest Alts (ft AMSL)	Speed Limits (kt)	VPA/RDH (°/ft)	Rec Navaid	Nav Spec
IF	UP852	-	-	-	-	+3700	-	-	-	RNP APCH
TF	UP851	-	195°(207.9°)	6.0	-	+2500	-	-	-	RNP APCH

RNP RWY 11 via UP853

Path Term	Waypoint Identifier	Fly-over	Course °M(°T)	Dist (NM)	Turn Dir	Rest Alts (ft AMSL)	Speed Limits (kt)	VPA/RDH (°/ft)	Rec Navaid	Nav Spec
IF	UP853	-	-	-	-	+3700	-	-	-	RNP APCH
TF	UP851	-	105°(117.7°)	4.0	-	+2500	-	-	-	RNP APCH

RNP RWY 11 via UP854

Path Term	Waypoint Identifier	Fly-over	Course °M(°T)	Dist (NM)	Turn Dir	Rest Alts (ft AMSL)	Speed Limits (kt)	VPA/RDH (°/ft)	Rec Navaid	Nav Spec
IF	UP854	-	-	-	-	+3700	-	-	-	RNP APCH
TF	UP851	-	015°(027.7°)	6.0	-	+2500	-	-	-	RNP APCH

Path Term	Waypoint Identifier	Fly-over	Course °M(°T)	Dist (NM)	Turn Dir	Rest Alts (ft AMSL)	Speed Limits (kt)	VPA/RDH (°/ft)	Rec Navaid	Nav Spec
IF	UP851	-	-	-	-	+2500	-	-	-	RNP APCH
TF	UP850	-	105°(117.8°)	5.0	-	@2500	-	-	-	RNP APCH
TF	RW11	Y	105°(118.0°)	6.0	-	@591	-	-3.0/50	-	RNP APCH
TF	UP550	Y	105°(118.2°)	7.2	-	-	-	-	-	RNP APCH
DF	USAXO	Y	-	-	R	-	-240	-	-	RNP APCH

ESUP Holding USAXO

Path Term	Waypoint Identifier	Fly-over	Course °M(°T)	Dist (NM)	Turn Dir	Rest Alts (ft AMSL)	Speed Limits (kt)	VPA/RDH (°/ft)	Rec Navaid	Nav Spec
HM	USAXO	Y	105°(118.0°)	-	R	+2900	-240	-	-	RNP 1

FAS DATA BLOCK**Input data**

Operation Type	0
SBAS Provider	1 (EGNOS)
Airport Identifier	ESUP
Runway	11
Runway Letter	0 (None)
Approach Performance Designator	0
Route Indicator	
Reference Path Data Selector	0
Reference Path Identifier	E11A
LTP/FTP Latitude	671458.2875N
LTP/FTP Longitude	0230304.4675E
LTP/FTP Ellipsoidal Height (metres)	189.4
FPAP Latitude	671423.1945N
Delta FPAP Latitude (seconds)	-35.0930
FPAP Longitude	0230553.4545E
Delta FPAP Longitude (seconds)	168.9870
Threshold Crossing Height	50.0
TCH Units Selector	0 (feet)
Glidepath Angle (degrees)	3.00
Course Width (metres)	105.00
Length Offset (metres)	0
HAL (metres)	40.0
VAL (metres)	50.0

Output data

Data Block	10 10 15 13 05 0B 00 00 01 31 31 05 DF 40 DC 1C 27 7C E4 09 66 1B D6 ED FE 36 28 05 F4 01 2C 01 64 00 C8 FA 4A 75 97 D4
Calculated CRC Value	4A7597D4

Required Additional Data

ICAO Code	ES
LTP/FTP Orthometric Height (metres)	164.8