

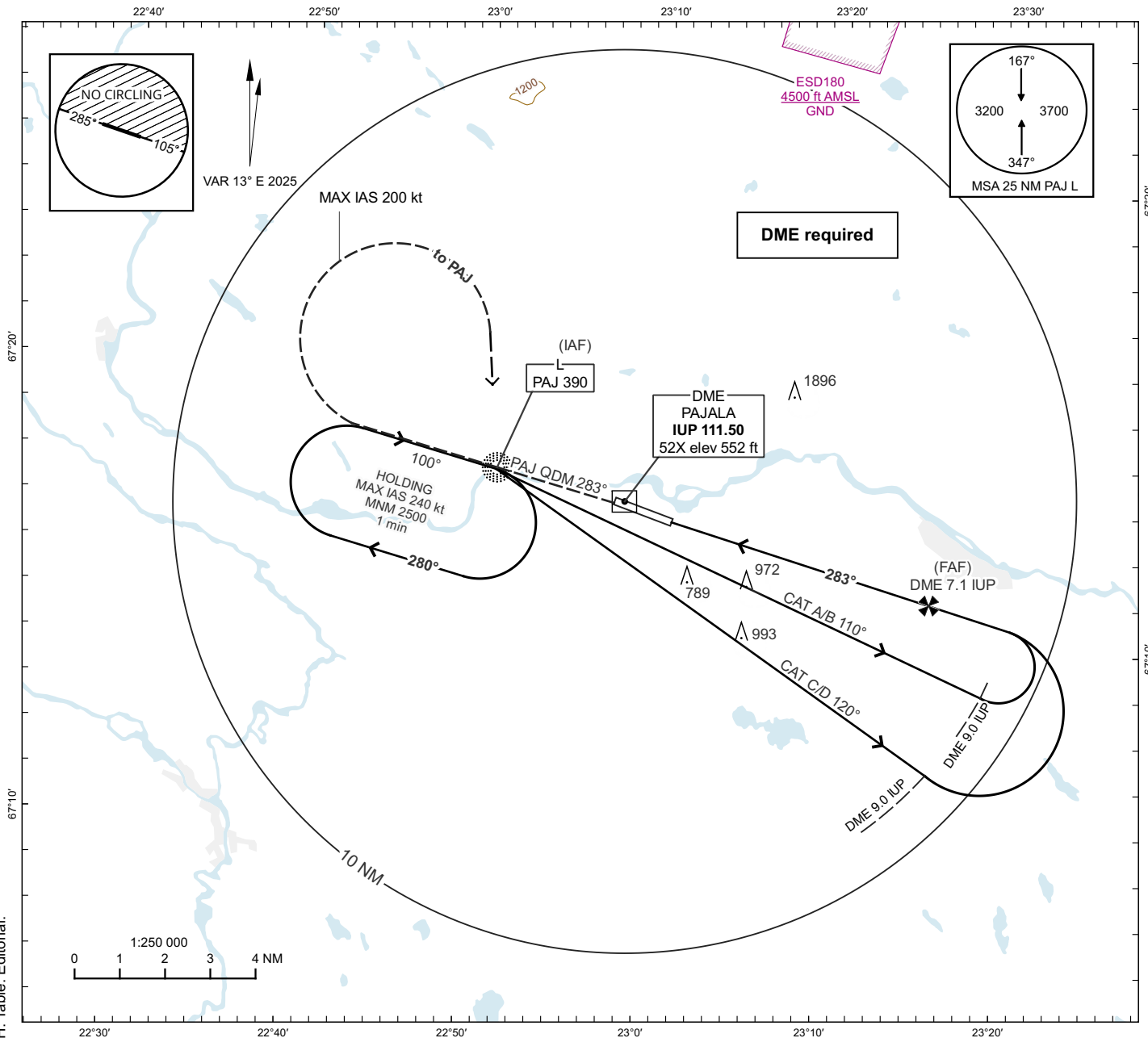
**INSTRUMENT  
APPROACH  
CHART - ICAO**

**THR ELEV 541 ft AD ELEV 542 ft**

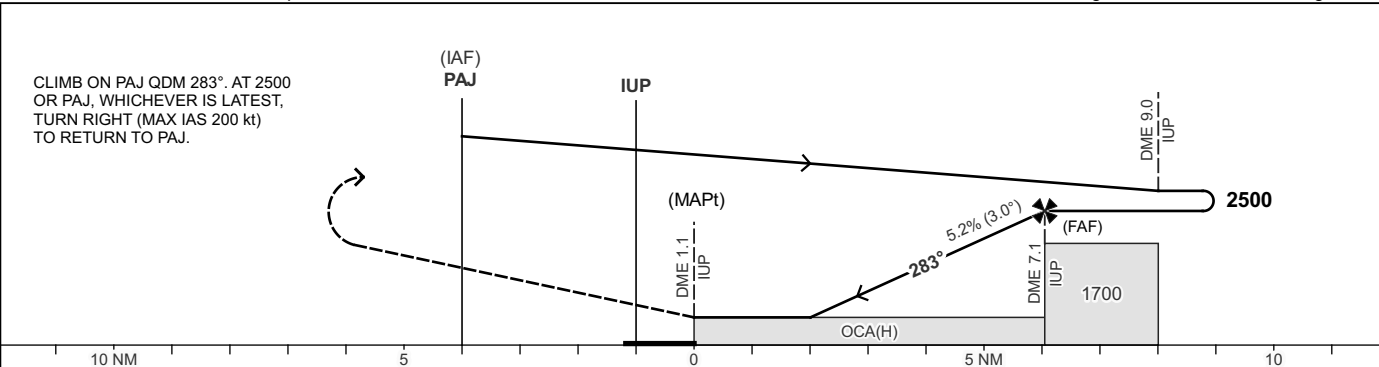
OCH are related to THR.  
Circling OCH are related to AD ELEV.  
BRG are MAG.  
ALT, HGT and ELEV in ft.

PAJALA INFORMATION 118.380

**PAJALA  
NDB RWY 29**



TA 5000 ft AMSL      Max speed in Baseturn 220 kt IAS      Final APCH line offset 2° FM QFU 285°      \*Timing not authorized for defining MAPt



OCA(H)					Final Approach		Distance FAF-MAPt 6.0 NM*					
CAT of ACFT	A	B	C	D	DME IUP NM	4	5	6	7			
Straight-in Approach	1220(680)				ALT	1520	1840	2160	2480			
Circling SW RWY	1220(680)	1270(730)	1390(850)	1390(850)	GS	kt	80	100	120	140	160	180
					Time	min:s	4:29	3:35	3:00	2:34	2:15	2:00
					Rate of descent	ft/min	425	530	635	745	850	955

CHANGE: VAR, OSBT, Holding MAX IAS, MOCA, OCA(H), Missed APCH, Table, Editorial.