

AIP SVERIGE/SWEDEN

**INSTRUMENT
APPROACH
CHART - ICAO**

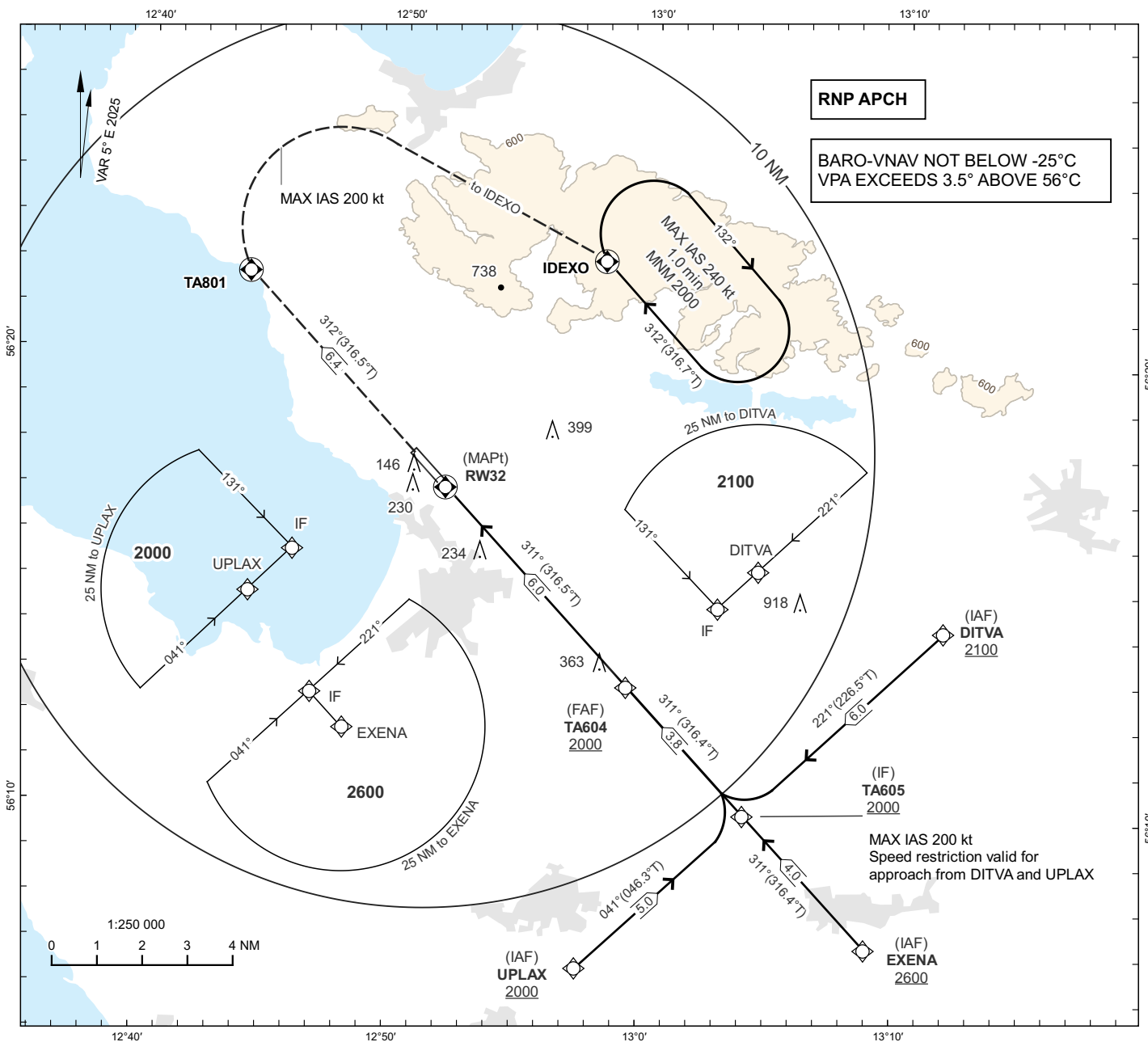
THR ELEV 52 ft AD ELEV 62 ft

OCH are related to THR.
Circling OCH are related to AD ELEV.
BRG are MAG (True).
ALT, HGT and ELEV in ft.

ÄNGELHOLM TOWER 127.105
ÄNGELHOLM APPROACH 132.455

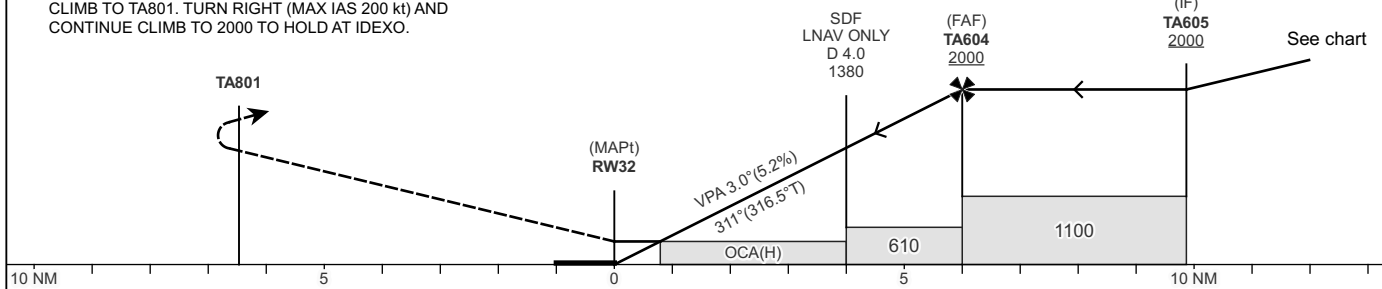
**ÄNGELHOLM
RNP RWY 32**

EGNOS CH 48707 E 32A



TA 5000 ft AMSL RDH 50 ft

MISSED APPROACH:
CLIMB TO TA801. TURN RIGHT (MAX IAS 200 kt) AND CONTINUE CLIMB TO 2000 TO HOLD AT IDEXO.



OCA(H)					Final Approach	Distance FAF-MAPt 6.0 NM						
CAT of ACFT	A	B	C	D	Dist to RW32	NM	2	3	4	5		
LPV	277(225)	289(237)	297(245)	307(255)	ALT	ft	740	1060	1380	1700		
LNAV/VNAV	354(302)	366(314)	373(321)	383(331)	GS	kt	80	100	120	140	160	180
LNAV	480(430)				Rate of descent	ft/min	425	530	635	745	850	955
Circling	530(470)	700(640)	1140(1080)	1140(1080)								
Circling SW RWY	530(470)	560(500)	660(600)	750(690)								

CHANGE: VAR, OBST, MOCA, OCA(H), circling new, coding, editorial.

RNP RWY 32 via DITVA

Path Term	Waypoint Identifier	Fly-over	Course °M(°T)	Dist (NM)	Turn Dir	Altitude	Speed Limits (kt)	VPA/RDH (°/ft)	Rec Navaid	Nav Spec
IF	DITVA	-	-	-	-	+2100	-	-	-	RNP APCH
TF	TA605	-	221°(226.5°)	6.0	-	+2000	-200	-	-	RNP APCH

RNP RWY 32 via EXENA

Path Term	Waypoint Identifier	Fly-over	Course °M(°T)	Dist (NM)	Turn Dir	Altitude	Speed Limits (kt)	VPA/RDH (°/ft)	Rec Navaid	Nav Spec
IF	EXENA	-	-	-	-	+2600	-	-	-	RNP APCH
TF	TA605	-	311°(316.4°)	4.0	-	+2000	-	-	-	RNP APCH

RNP RWY 32 via UPLAX

Path Term	Waypoint Identifier	Fly-over	Course °M(°T)	Dist (NM)	Turn Dir	Altitude	Speed Limits (kt)	VPA/RDH (°/ft)	Rec Navaid	Nav Spec
IF	UPLAX	-	-	-	-	+2000	-	-	-	RNP APCH
TF	TA605	-	041°(046.3°)	5.0	-	+2000	-200	-	-	RNP APCH

Path Term	Waypoint Identifier	Fly-over	Course °M(°T)	Dist (NM)	Turn Dir	Altitude	Speed Limits (kt)	VPA/RDH (°/ft)	Rec Navaid	Nav Spec
IF	TA605	-	-	-	-	+2000	-	-	-	RNP APCH
TF	TA604	-	311°(316.4°)	3.8	-	+2000	-	-	-	RNP APCH
TF	RW32	Y	311°(316.5°)	6.0	-	@102	-	-3.0/50	-	RNP APCH
TF	TA801	Y	312°(316.5°)	6.4	-	-	-	-	-	RNP APCH
DF	IDEXO	Y	-	-	R	-	-200	-	-	RNP APCH

ESTA Holding IDEXO

Path Term	Waypoint Identifier	Fly-over	Course °M(°T)	Dist (NM)	Turn Dir	Altitude	Speed Limits (kt)	VPA/RDH (°/ft)	Rec Navaid	Nav Spec
HM	IDEXO	Y	312°(316.7°)	-	R	+2000	-240	-	-	RNP 1

FAS Data Block

RNP RWY 32

Input data

Operation Type	0
SBAS Provider	1 (EGNOS)
Airport Identifier	ESTA
Runway	32
Runway Letter	0 (None)
Approach Performance Designator	0
Route Indicator	
Reference Path Data Selector	0
Reference Path Identifier	E32A
LTP/FTP Latitude	561706.5950N
LTP/FTP Longitude	0125157.1565E
LTP/FTP Ellipsoidal Height (metres)	52.5
FPAP Latitude	561752.1155N
Delta FPAP Latitude (seconds)	45.5205
FPAP Longitude	0125039.1645E
Delta FPAP Longitude (seconds)	-77.9920
Threshold Crossing Height	50.0
TCH Units Selector	0 (feet)
Glidepath Angle (degrees)	3.00
Course Width (metres)	105.00
Length Offset (metres)	0
HAL (metres)	40.0
VAL (metres)	50.0

Output data

Data Block	10 01 14 13 05 20 00 00 01 32 33 05 46 AC 27 18 C9 7C 85 05 0D 16 A1 63 01 B0 9E FD F4 01 2C 01 64 00 C8 FA E8 02 6F 6D
Calculated CRC Value	E8026F6D

Required Additional Data

ICAO Code	ES
LTP/FTP Orthometric Height (metres)	15.8