

AIP SVERIGE/SWEDEN

**INSTRUMENT
APPROACH
CHART - ICAO**

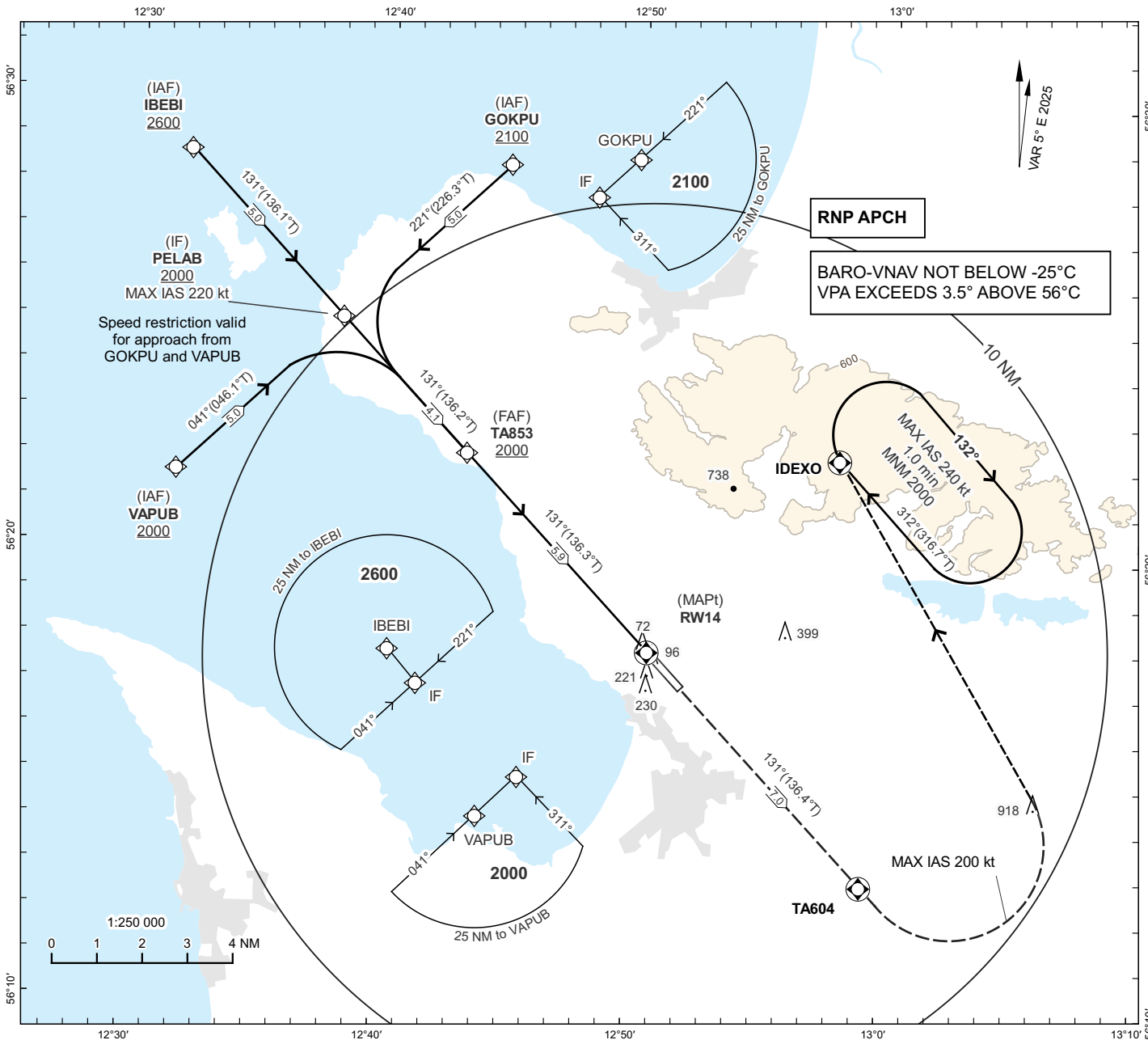
THR ELEV 60.2 ft AD ELEV 62 ft

OCH are related to THR.
Circling OCH are related to AD ELEV.
BRG are MAG (True).
ALT, HGT and ELEV in ft.

ÄNGELHOLM TOWER 127.105
ÄNGELHOLM APPROACH 132.455

**ÄNGELHOLM
RNP RWY 14**

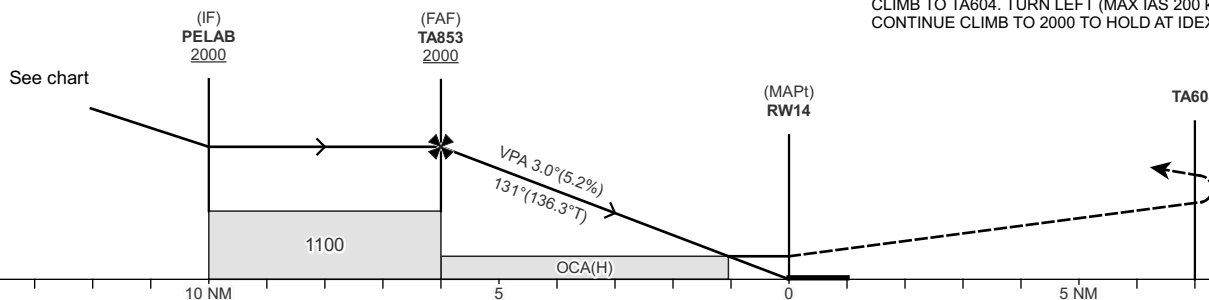
EGNOS CH 87420 E 14A



TA 5000 ft AMSL RDH 50 ft

MISSED APPROACH:
CLIMB TO TA604. TURN LEFT (MAX IAS 200 kt) AND
CONTINUE CLIMB TO 2000 TO HOLD AT IDEXO.

See chart



OCA(H)					Final Approach	Distance FAF-MAPt 5.9 NM						
CAT of ACFT	A	B	C	D	Dist to RW14	NM	5	4	3	2		
LPV	203(142)	212(151)	222(161)	233(172)	ALT	ft	1710	1390	1070	750		
LNAV/VNAV	351(291)	363(303)	372(312)	389(329)	GS	kt	80	100	120	140	160	180
LNAV	460 (400)				Rate of descent	ft/min	425	530	635	745	850	955
Circling	530(470)	700(640)	1140(1080)	1140(1080)								
Circling SW RWY	530(470)	560(500)	660(600)	750(690)								

CHANGE: VAR, OBST, LPV CAT I, MOCA, OCA(H), circling new, coding, editorial.

RNP RWY 14 via IBEBI

Path Term	Waypoint Identifier	Fly-over	Course °M(°T)	Dist (NM)	Turn Dir	Altitude	Speed Limits (kt)	VPA/RDH (°/ft)	Rec Navaid	Nav Spec
IF	IBEBI	-	-	-	-	+2600	-	-	-	RNP APCH
TF	PELAB	-	131°(136.1°)	5.0	-	+2000	-	-	-	RNP APCH

RNP RWY 14 via VAPUB

Path Term	Waypoint Identifier	Fly-over	Course °M(°T)	Dist (NM)	Turn Dir	Altitude	Speed Limits (kt)	VPA/RDH (°/ft)	Rec Navaid	Nav Spec
IF	VAPUB	-	-	-	-	+2000	-	-	-	RNP APCH
TF	PELAB	-	041°(046.1°)	5.0	-	+2000	-220	-	-	RNP APCH

RNP RWY 14 via GOKPU

Path Term	Waypoint Identifier	Fly-over	Course °M(°T)	Dist (NM)	Turn Dir	Altitude	Speed Limits (kt)	VPA/RDH (°/ft)	Rec Navaid	Nav Spec
IF	GOKPU	-	-	-	-	+2100	-	-	-	RNP APCH
TF	PELAB	-	221°(226.3°)	5.0	-	+2000	-220	-	-	RNP APCH

Path Term	Waypoint Identifier	Fly-over	Course °M(°T)	Dist (NM)	Turn Dir	Altitude	Speed Limits (kt)	VPA/RDH (°/ft)	Rec Navaid	Nav Spec
IF	PELAB	-	-	-	-	+2000	-	-	-	RNP APCH
TF	TA853	-	131°(136.2°)	4.1	-	+2000	-	-	-	RNP APCH
TF	RW14	Y	131°(136.3°)	5.9	-	@110	-	-3.0/50	-	RNP APCH
TF	TA604	Y	131°(136.4°)	7.0	-	-	-	-	-	RNP APCH
DF	IDEXO	Y	-	-	L	-	-200	-	-	RNP APCH

ESTA Holding IDEXO

Path Term	Waypoint Identifier	Fly-over	Course °M(°T)	Dist (NM)	Turn Dir	Altitude	Speed Limits (kt)	VPA/RDH (°/ft)	Rec Navaid	Nav Spec
HM	IDEXO	Y	312°(316.7°)	-	R	+2000	-240	-	-	RNP 1

FAS Data Block

RNP RWY 14

Input data

Operation Type	0
SBAS Provider	1 (EGNOS)
Airport Identifier	ESTA
Runway	14
Runway Letter	0 (None)
Approach Performance Designator	0
Route Indicator	
Reference Path Data Selector	0
Reference Path Identifier	E14A
LTP/FTP Latitude	561752.1155N
LTP/FTP Longitude	0125039.1645E
LTP/FTP Ellipsoidal Height (metres)	55.1
FPAP Latitude	561704.8420N
Delta FPAP Latitude (seconds)	-47.2735
FPAP Longitude	0125200.1765E
Delta FPAP Longitude (seconds)	81.0120
Threshold Crossing Height	50.0
TCH Units Selector	0 (feet)
Glidepath Angle (degrees)	3.00
Course Width (metres)	105.00
Length Offset (metres)	72
HAL (metres)	40.0
VAL (metres)	35.0

Output data

Data Block	10 01 14 13 05 0E 00 00 01 34 31 05 E7 0F 29 18 79 1B 83 05 27 16 AD 8E FE E8 78 02 F4 01 2C 01 64 09 C8 AF 58 11 BE 76
Calculated CRC Value	5811BE76

Required Additional Data

ICAO Code	ES
LTP/FTP Orthometric Height (metres)	18.4