

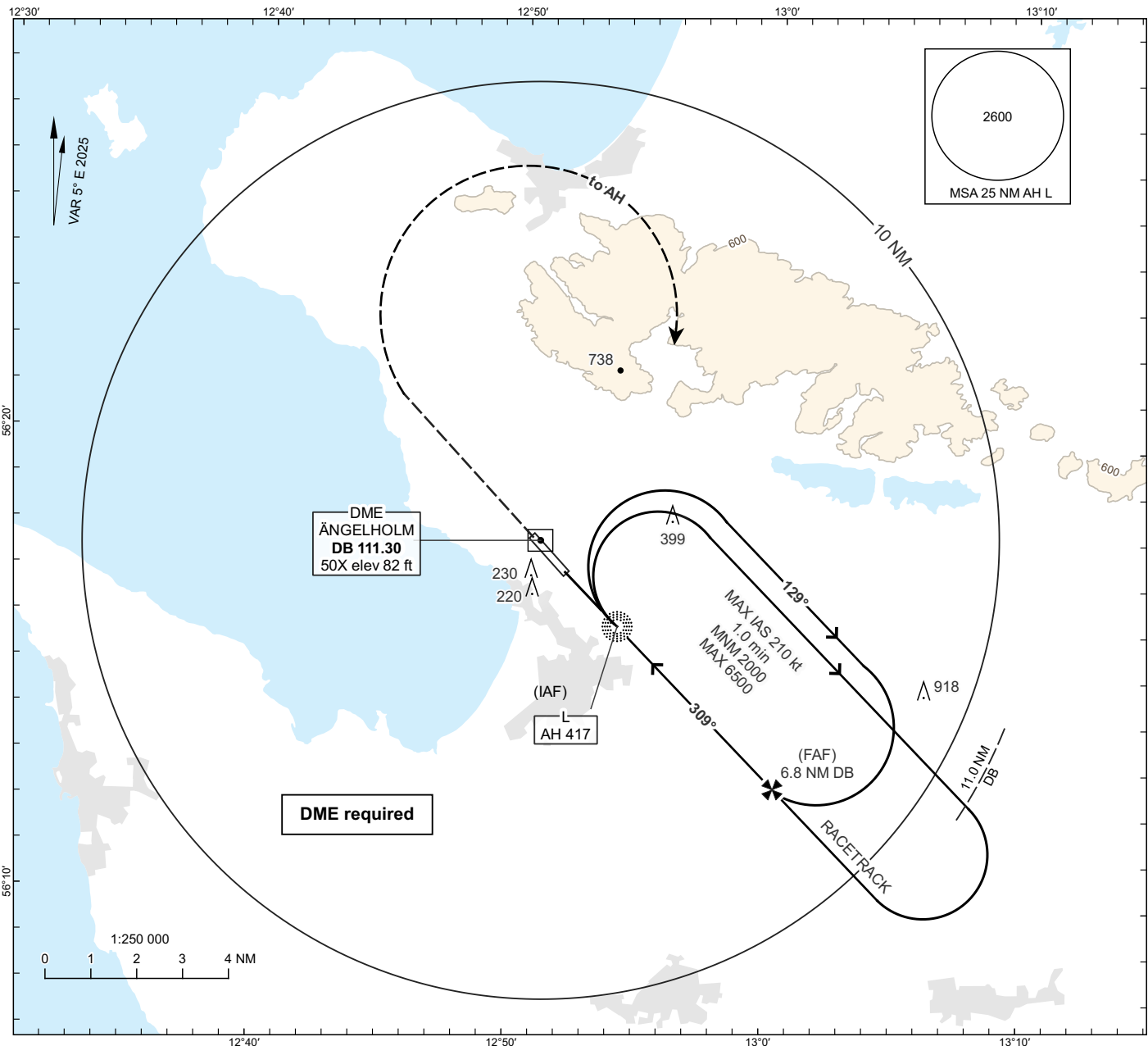
**INSTRUMENT  
APPROACH  
CHART - ICAO**

**THR ELEV 52 ft, AD ELEV 62 ft**

OCH are related to THR.  
Circling OCH are related to AD ELEV.  
BRG are MAG.  
ALT, HGT and ELEV in ft.

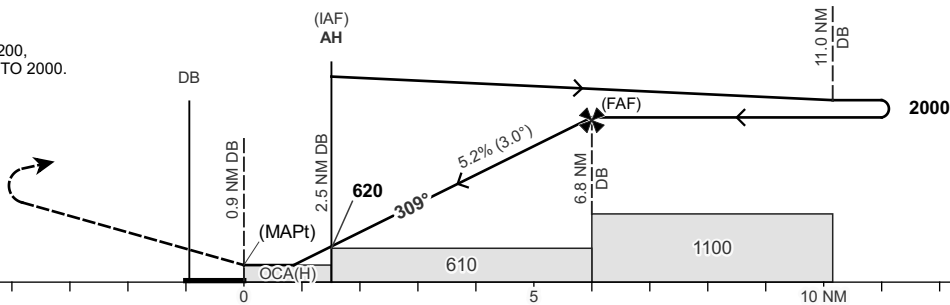
ÄNGELHOLM TOWER 127.105  
ÄNGELHOLM APPROACH 132.455

**ÄNGELHOLM  
NDB RWY 32**



TA 5000 ft AMSL      Final approach line offset 2°      MAX speed within racetrack 210 kt      \*Timing not authorized for defining the MAPt

MISSED APPROACH:  
CLIMB STRAIGHT AHEAD TO 1200,  
TURN RIGHT TO AH CLIMBING TO 2000.



	OCA(H)				Final Approach	Distance FAF-MAPt 6.0 NM*						
	A	B	C	D		DME DB	NM	6	5	4	3	
CAT of ACFT					ALT	ft	1740	1420	1100	780		
Straight-in Approach	470(420)				GS	kt	80	100	120	140	160	180
Circling	530(470)	700(640)	1140(1080)	1140(1080)	Time	min:s	4:27	3:34	2:58	2:33	2:14	1:59
Circling SW RWY	530(470)	560(500)	660(600)	750(690)	Rate of descent	ft/min	425	530	635	745	850	955

CHANGE: VAR, OBST, MOCA, OCA(H), table, editorial.