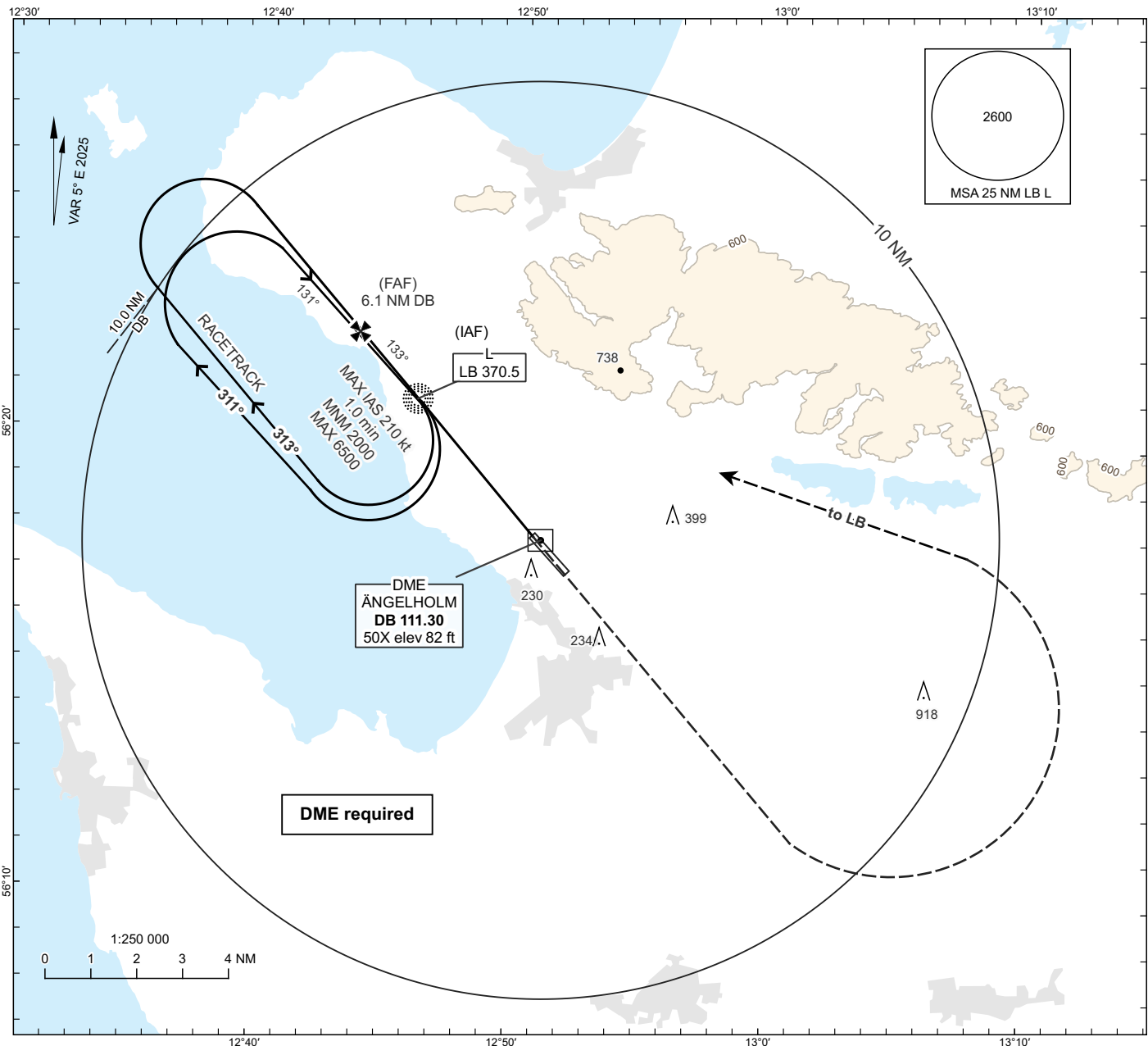


**INSTRUMENT
APPROACH
CHART - ICAO**

THR ELEV 60.2 ft, AD ELEV 62 ft
OCH are related to THR.
Circling OCH are related to AD ELEV.
BRG are MAG.
ALT, HGT and ELEV in ft.

ÄNGELHOLM TOWER 127.105
ÄNGELHOLM APPROACH 132.455

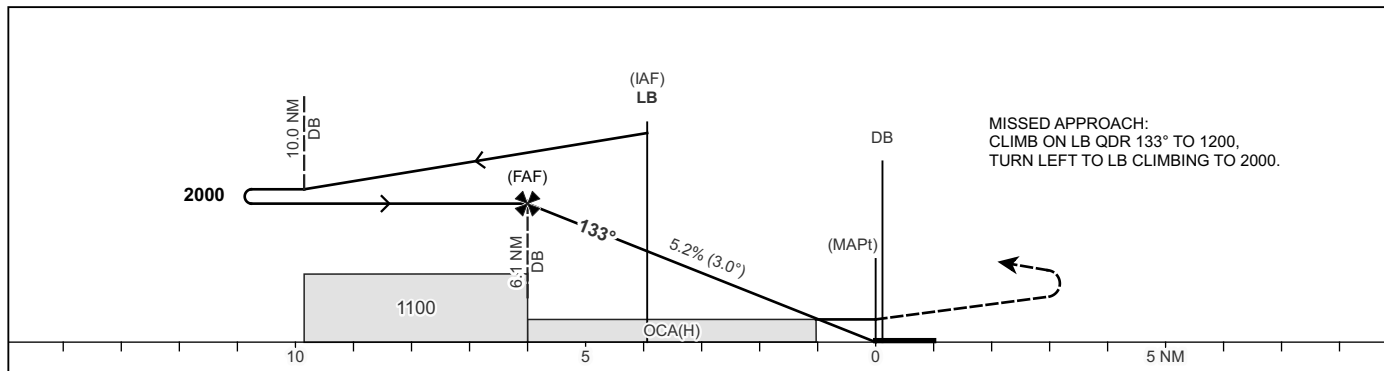
**ÄNGELHOLM
NDB RWY 14**



TA 5000 ft AMSL

Final approach line offset 2°

MAX speed within racetrack 210 kt IAS



	OCA(H)				Final Approach	Distance FAF-MAPt 5.9 NM						
	A	B	C	D		DME DB	NM	6	5	4	3	2
CAT of ACFT					ALT	ft	1970	1650	1330	1020	700	
Straight-in Approach	490(430)				GS	kt	80	100	120	140	160	180
Circling	530(470)	700(640)	1140(1080)	1140(1080)	Time	min:s	4:27	3:34	2:58	2:33	2:14	1:59
Circling SW RWY	530(470)	560(500)	660(600)	750(690)	Rate of descent	ft/min	425	530	635	745	850	955

CHANGE: VAR, OBST, MOCA, OCA(H), table, editorial.