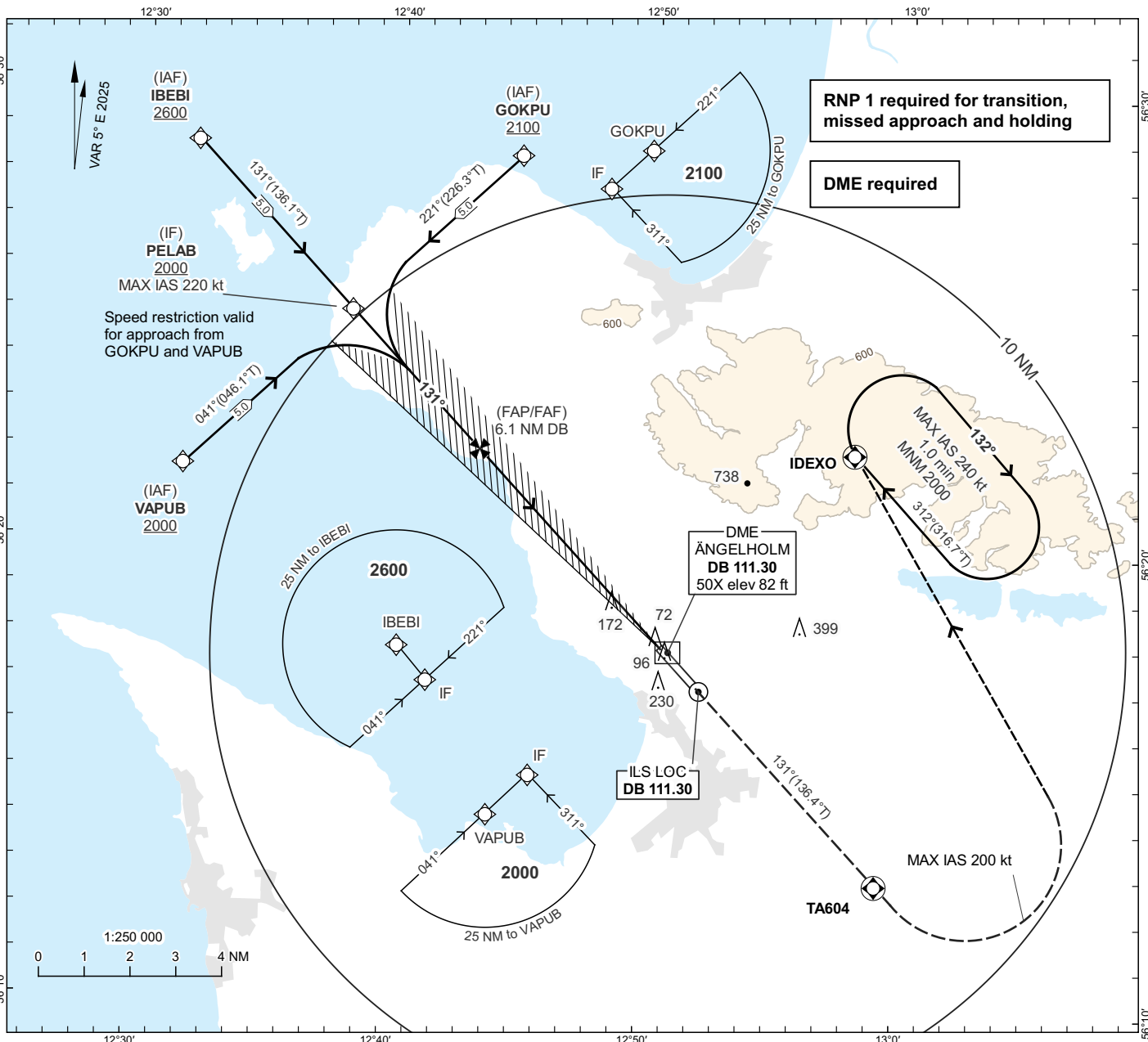


**INSTRUMENT
APPROACH
CHART - ICAO**

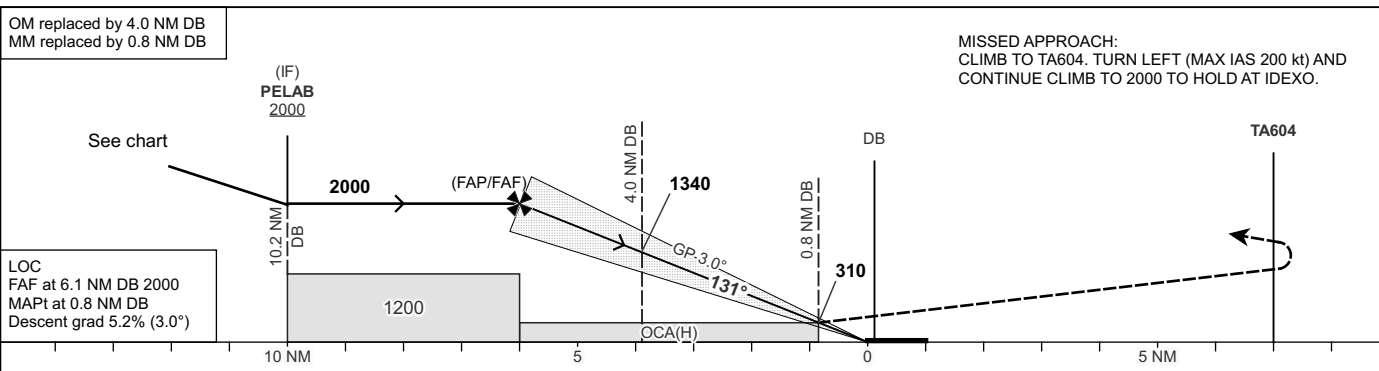
THR ELEV 60.2 ft, AD ELEV 62 ft
OCH are related to THR.
Circling OCH are related to AD ELEV.
BRG are MAG (True).
ALT, HGT and ELEV in ft.

ÄNGELHOLM TOWER 127.105
ÄNGELHOLM APPROACH 132.455

**ÄNGELHOLM
ILS z CAT I or LOC z
RWY 14**



TA 5000 ft AMSL RDH 50.9 ft *Timing not authorized for defining the MAPt



		OCA(H)				Final Approach	Distance FAF-MAPt 5.3 NM*						
CAT of ACFT		A	B	C	D	DME DB	NM	6	5	4	3	2	
Straight-in Approach	CAT I	203(142)	212(151)	222(161)	233(172)	ALT	ft	1970	1650	1340	1020	700	
	LOC	420(360)				GS	kt	80	100	120	140	160	180
Circling		530(470)	700(640)	1140(1080)	1140(1080)	Time	min:s	3:59	3:11	2:39	2:16	1:59	1:46
Circling SW RWY		530(470)	560(500)	660(600)	750(690)	Rate of descent	ft/min	425	530	635	745	850	955

CHANGE: VAR, OBST, MOCA, OCA(H), Navigation specification, table, editorial.