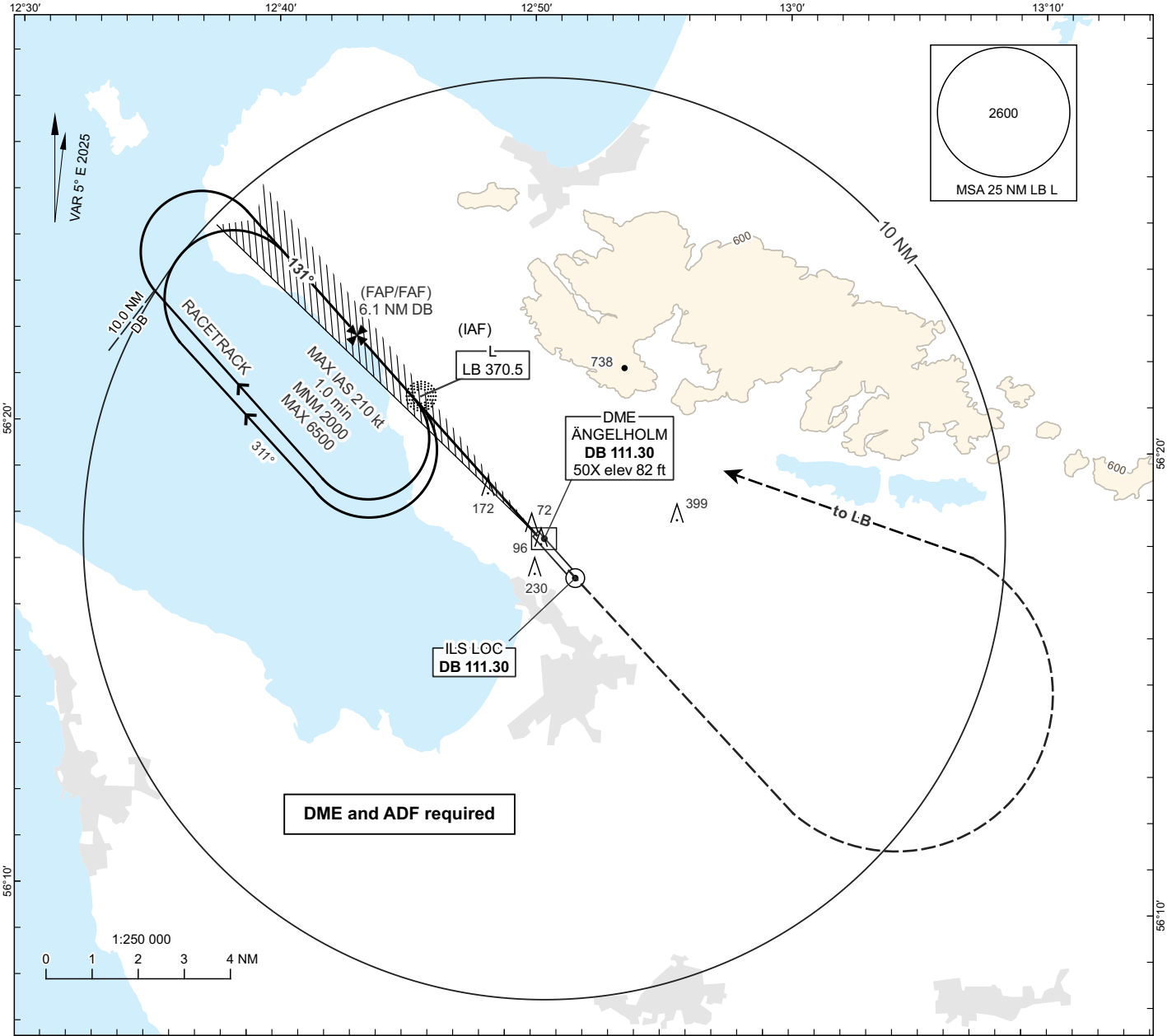


**INSTRUMENT  
APPROACH  
CHART - ICAO**

**THR ELEV 60.2 ft, AD ELEV 62 ft**  
OCH are related to THR.  
Circling OCH are related to AD ELEV.  
BRG are MAG.  
ALT, HGT and ELEV in ft.

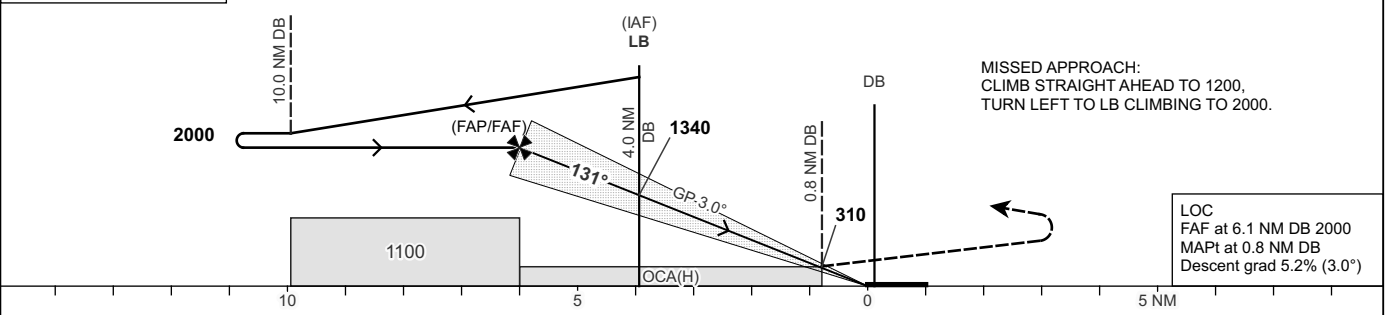
ÄNGELHOLM TOWER 127.105  
ÄNGELHOLM APPROACH 132.455

**ÄNGELHOLM**  
**ILS y CAT I or LOC y**  
**RWY 14**



TA 5000 ft AMSL RDH 50.9 ft MAX speed within racetrack 210 kt IAS \*Timing not authorized for defining the MAPt

OM replaced by 4.0 NM DB  
MM replaced by 0.8 NM DB



OCA(H)					Final Approach	Distance FAF - MAPt 5.3 NM*						
CAT of ACFT	A	B	C	D	DME DB	NM	6	5	4	3	2	
Straight-in Approach	CAT I	203(142)	212(151)	222(161)	233(172)	ALT	ft	1970	1650	1340	1020	700
	LOC	420(360)				GS	kt	80	100	120	140	160
Circling	530(470)	700(640)	1140(1080)	1140(1080)	Time	min:s	3:59	3:11	2:39	2:16	1:59	1:46
Circling SW RWY	530(470)	560(500)	660(600)	750(690)	Rate of descent	ft/min	425	530	635	745	850	955

CHANGE: VAR, OBST, MOCA, OCA(H), table, editorial.