

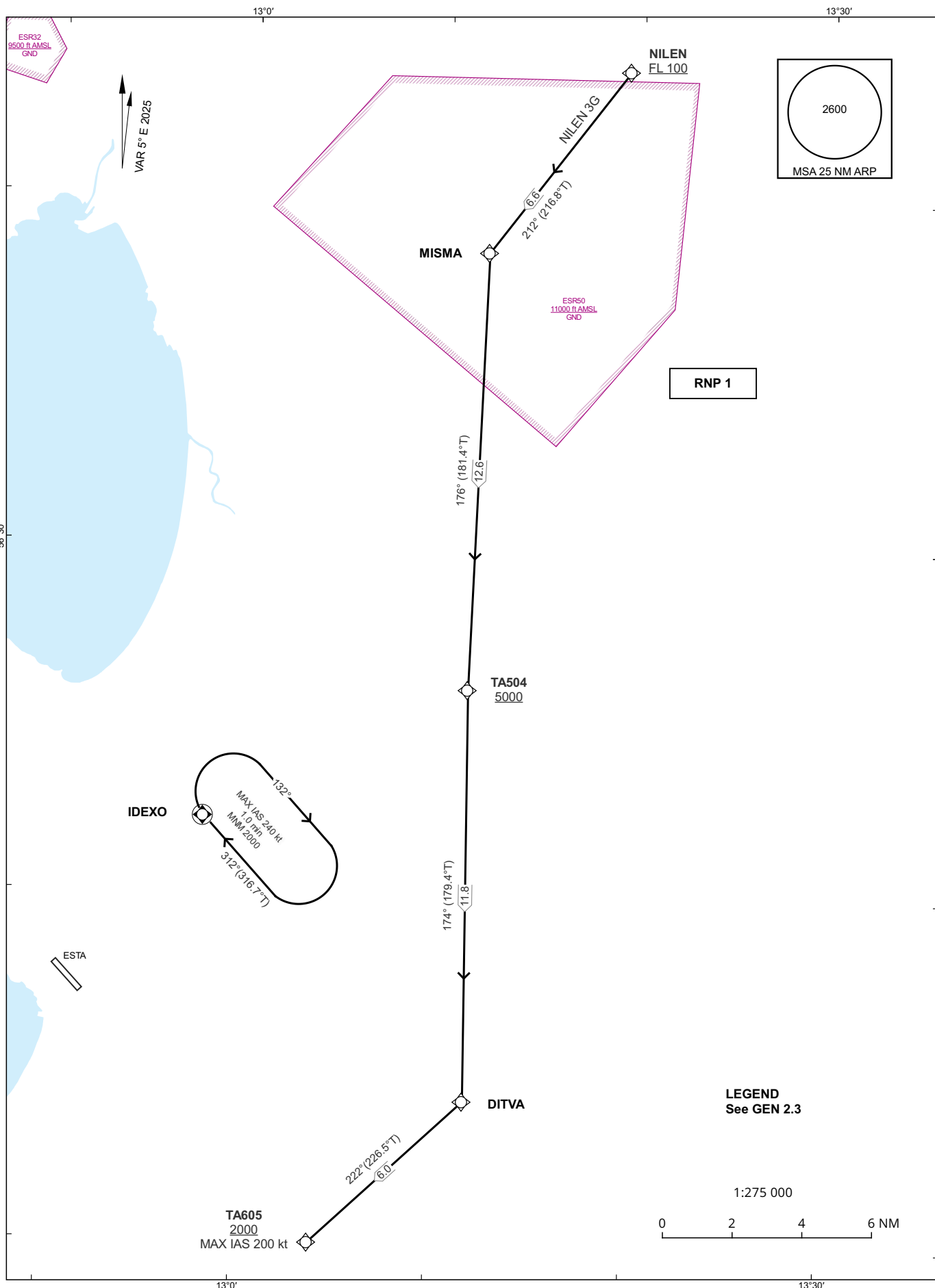
**STANDARD ARRIVAL CHART -  
INSTRUMENT (STAR) - ICAO**

HGT and ALT in ft  
BRG are MAG (True)  
TA 5000 ft AMSL

ÄNGELHOLM TOWER	127.105
ÄNGELHOLM APPROACH	132.455

**ÄNGELHOLM  
RNP RWY 32**

NILEN 3G



CHANGE: VAR, navigation specification, designators, editorial.

**Prescribed Coding of RNP STAR for RWY 32****NILEN 3G**

Path Term	Waypoint Identifier	Fly-over	Course °M(°T)	Dist (NM)	Turn Dir	Altitude (ft AMSL)	Speed Limits (kt)	VPA/RDH (°/ft)	Rec Navaid	Nav Spec
IF	NILEN	-	-	-	-	+FL100	-	-	-	RNP 1
TF	MISMA	-	212° (216.8°)	6.6	-	-	-	-	-	RNP 1
TF	TA504	-	176° (181.4°)	12.6	-	+5000	-	-	-	RNP 1
TF	DITVA	-	174° (179.4°)	11.8	-	-	-	-	-	RNP 1
TF	TA605	-	221° (226.5°)	6.0	-	+2000	-200	-	-	RNP 1

STAR instruction: NILEN (FL100 or above) – MISMA – TA504 (5000 ft or above) – DITVA – TA605 (MAX IAS 200 kt, 2000 ft or above)