

AIP SVERIGE/SWEDEN

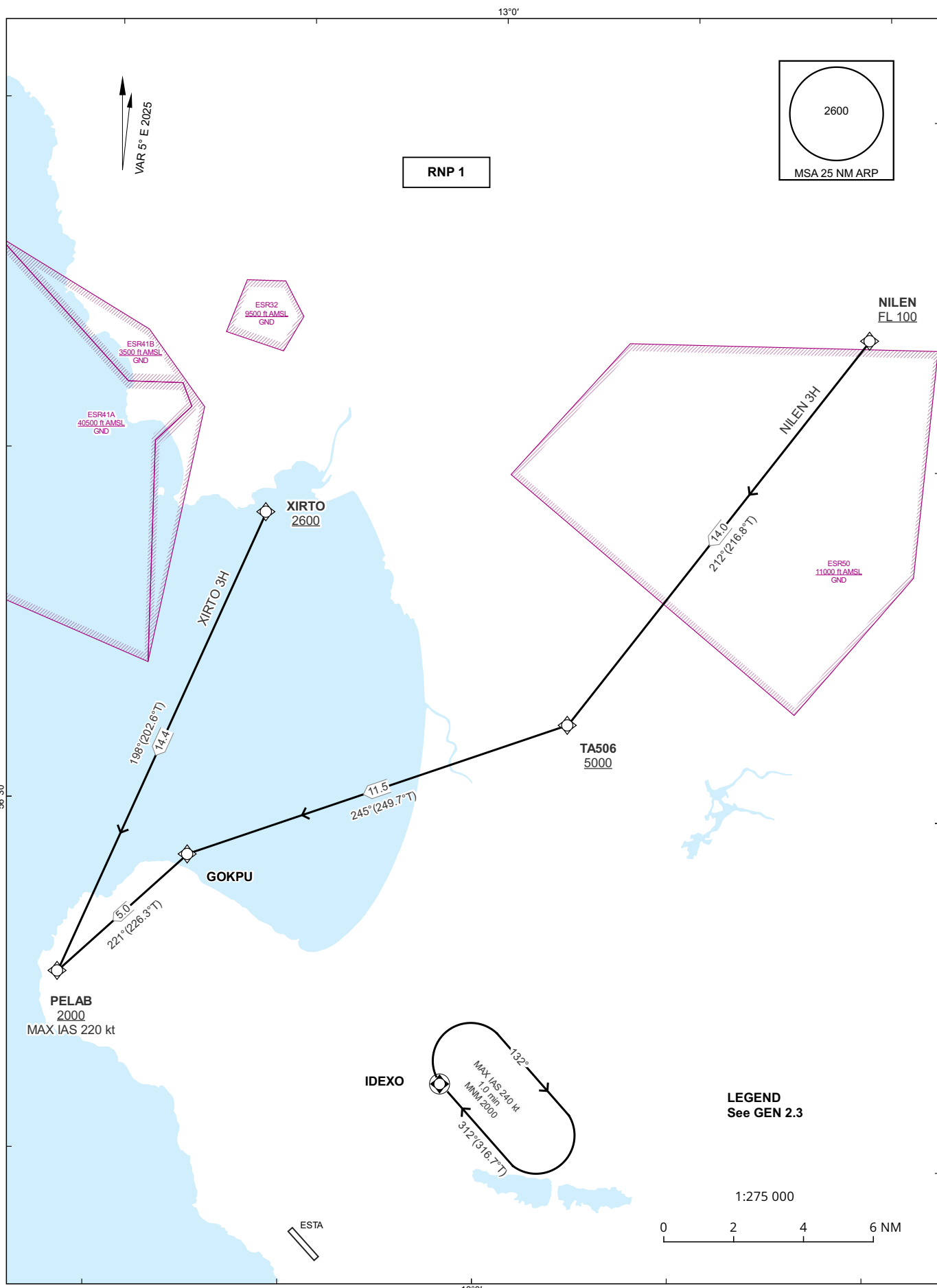
**STANDARD ARRIVAL CHART -  
INSTRUMENT (STAR) - ICAO**

HGT and ALT in ft  
BRG are MAG (True)  
TA 5000 ft AMSL

ÄNGELHOLM TOWER	127.105
ÄNGELHOLM APPROACH	132.455

**ÄNGELHOLM  
RNP RWY 14**

NILEN 3H, XIRTO 3H



CHANGE: VAR, navigation specification, designators, editorial.

### Prescribed Coding of RNP STAR for RWY 14

#### NILEN 3H

Path Term	Waypoint Identifier	Fly-over	Course °M(°T)	Dist (NM)	Turn Dir	Altitude (ft AMSL)	Speed Limits (kt)	VPA/RDH (°/ft)	Rec Navaid	Nav Spec
IF	NILEN	-	-	-	-	+FL100	-	-	-	RNP 1
TF	TA506	-	212° (216.8°)	14.0	-	+5000	-	-	-	RNP 1
TF	GOKPU	-	245° (249.7°)	11.5	-	-	-	-	-	RNP 1
TF	PELAB	-	221° (226.3°)	5.0	-	+2000	-220	-	-	RNP 1

STAR instruction: NILEN (FL100 or above) – TA506 (5000 ft or above) – GOKPU – PELAB (MAX IAS 220 kt, 2000 ft or above)

#### XIRTO 3H

Path Term	Waypoint Identifier	Fly-over	Course °M(°T)	Dist (NM)	Turn Dir	Altitude (ft AMSL)	Speed Limits (kt)	VPA/RDH (°/ft)	Rec Navaid	Nav Spec
IF	XIRTO	-	-	-	-	+2600	-	-	-	RNP 1
TF	PELAB	-	198° (202.6°)	14.4	-	+2000	-220	-	-	RNP 1

STAR instruction: XIRTO (2600 ft or above) – PELAB (MAX IAS 220 kt, 2000 ft or above)