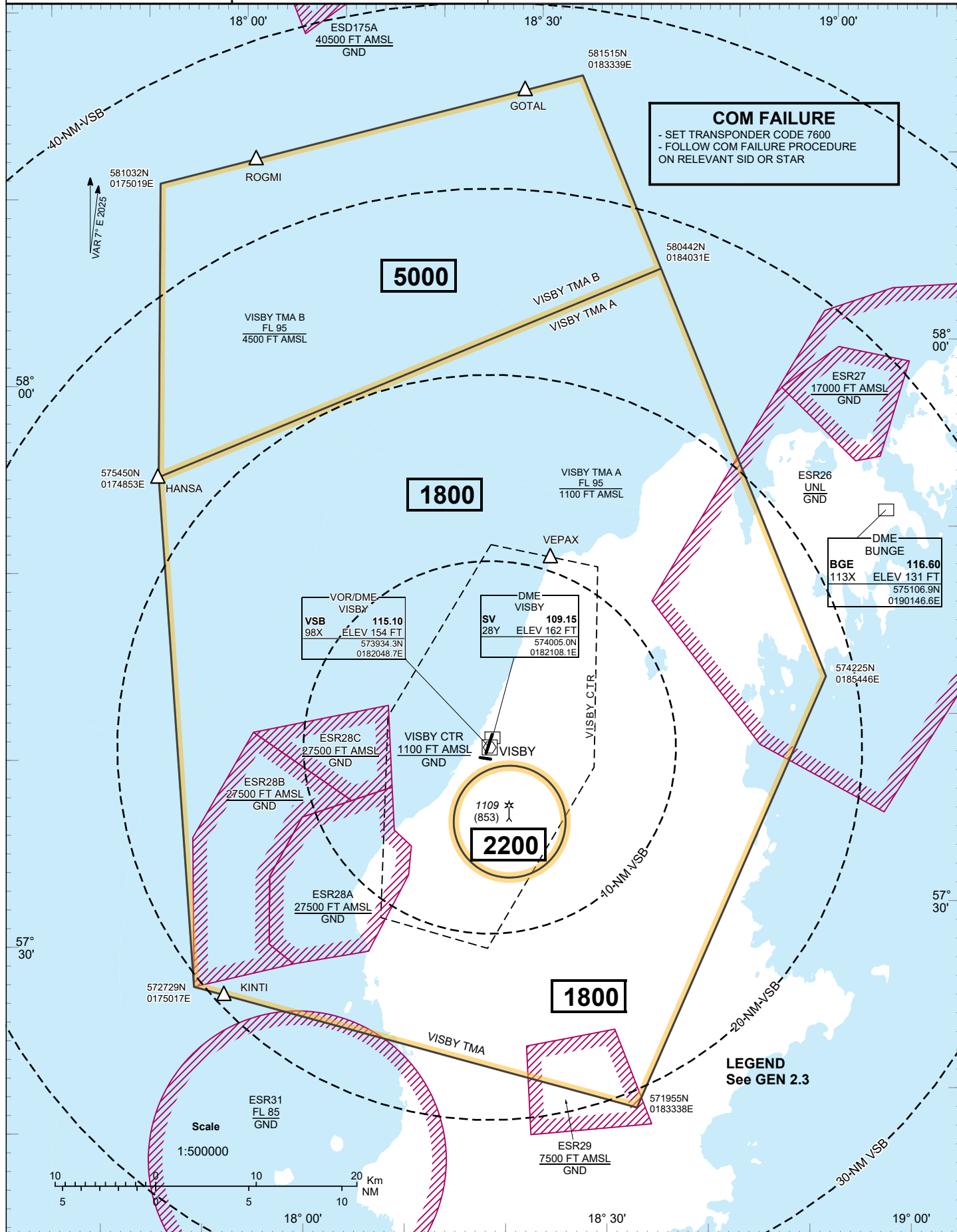


ATC Surveillance Minimum Altitude Chart

VISBY

<b>ESSV AD ELEV 164 FT</b> ELEV and ALT in ft	<b>VISBY TOWER</b> 120.305 <b>VISBY APPROACH</b> 126.155	THIS CHART MAY ONLY BE USED FOR CROSS-CHECKING OF ASSIGNED ALTITUDES WHILST IN RECEIPT OF RADAR SERVICE LEVELS ASSIGNED BY ATC INCLUDE A CORRECTION FOR LOW TEMPERATURE EFFECT
<b>TA 5000 AMSL</b>		



CHANGE: ESR27 new