

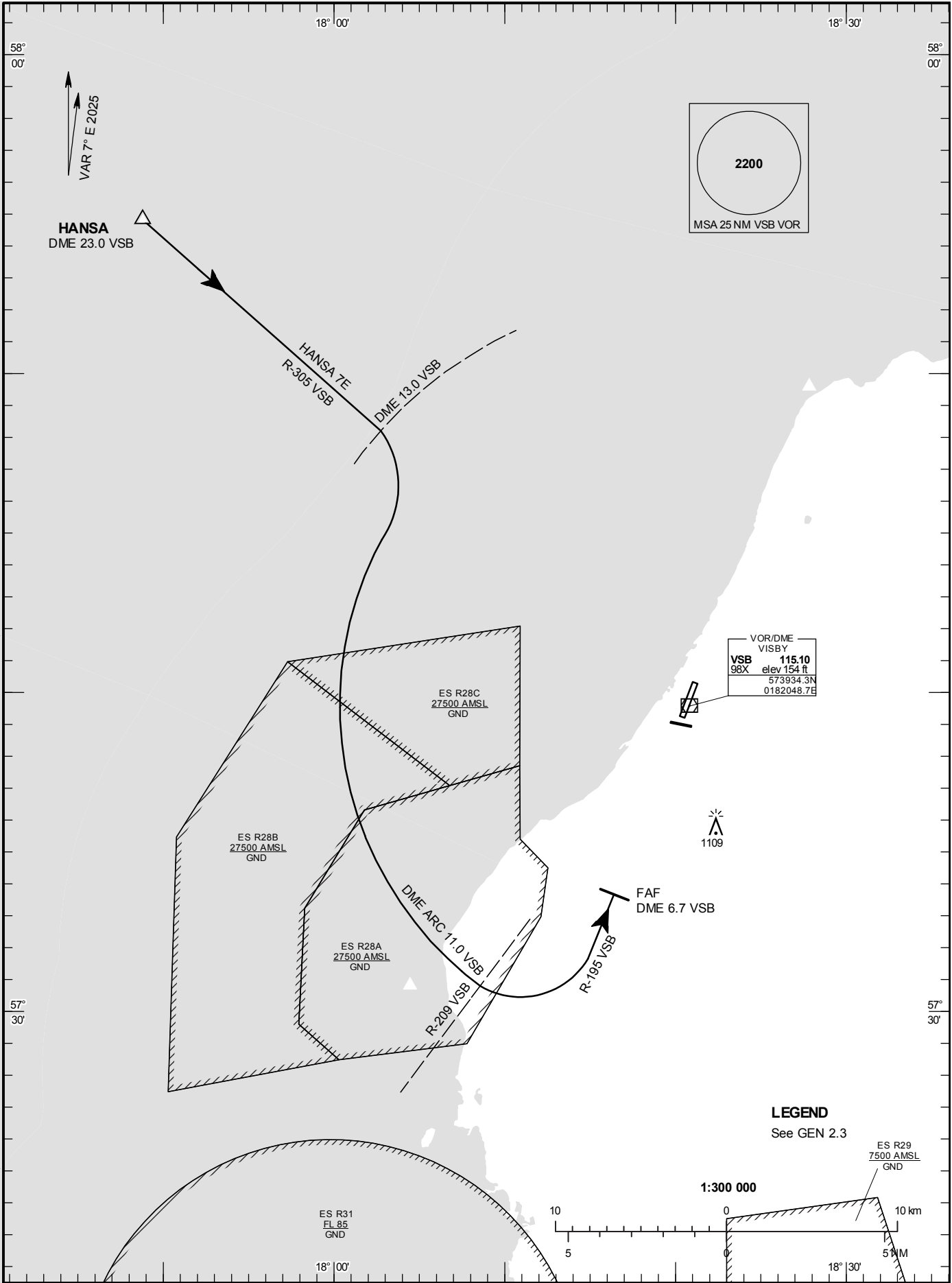
**STANDARD ARRIVAL
CHART - INSTRUMENT
(STAR) - ICAO**

HGT and ALT in ft
BRG are MAG
TA 5000 ft AMSL

VISBY TOWER	120.305
VISBY APPROACH	126.155

**VISBY
RWY 03**

HANSA 7E



CHANGE: ESR29 New.

VISBY

ARRIVAL (STAR) RWY 03

REMARK

Descent to a minimum altitude for an arrival route must not be initiated until an ATC clearance to this altitude or an approach clearance has been received.

HANSA 7E (HANSA SEVEN ECHO ARRIVAL)

At HANSA intercept R-305 VSB and proceed DME 13.0 VSB. Turn right and proceed on DME ARC 11.0 VSB. At R-209 VSB turn left to intercept R-195 VSB, not below 2200 ft until FAF.