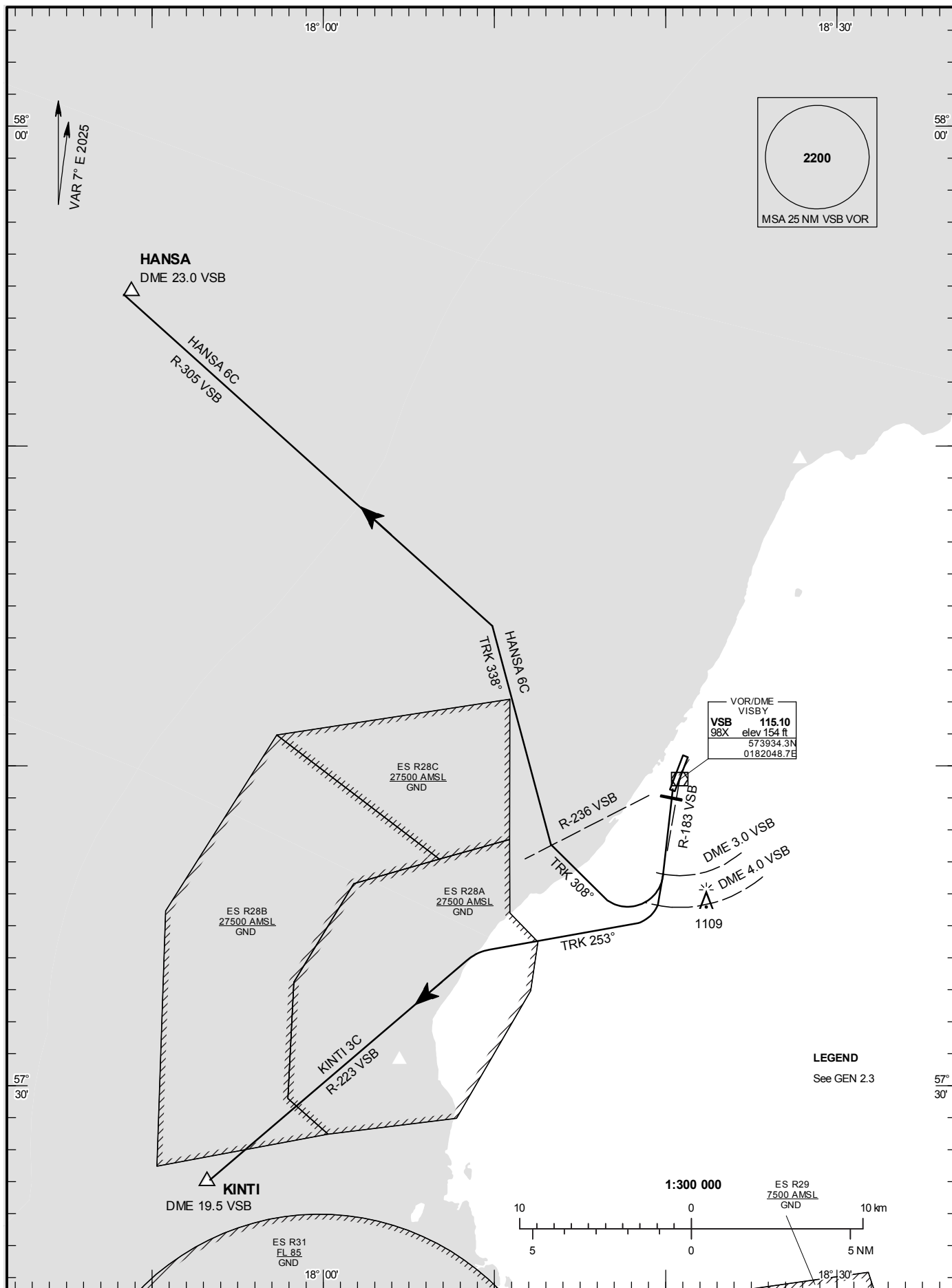


**STANDARD DEPARTURE
CHART - INSTRUMENT
(SID) - ICAO**

HGT and ALT in ft
BRG are MAG
TA 5000 ft AMSL

VISBY TOWER	120.305
VISBY APPROACH	126.155

HANSA 6C, KINTI 3C



CHANGE: ESR29 New.

VISBY

DEPARTURE (SID) RWY 21

HANSA 6C (HANSA SIX CHARLIE DEPARTURE)

Intercept R-183 VSB. At DME 3.0 turn right to track 308° and proceed to R-236 VSB. Turn right to track 338° to intercept R-305 VSB and proceed to HANSA.

(MNM climb gradient 3.5% (213 ft/NM))

Note. After initial turn, all maneuvering outside DME 3 VSB, due to noise disturbance.

KINTI 3C (KINTI THREE CHARLIE DEPARTURE)

Intercept R-183 VSB. At DME 4.0 VSB turn right to track 253°. Intercept R-223 VSB and proceed to KINTI.

(MNM climb gradient 3.5% (213 ft/NM))

Note. KINTI 3C: MNM average climb gradient is 8.1% (492 ft/NM) in order to stay inside controlled airspace.