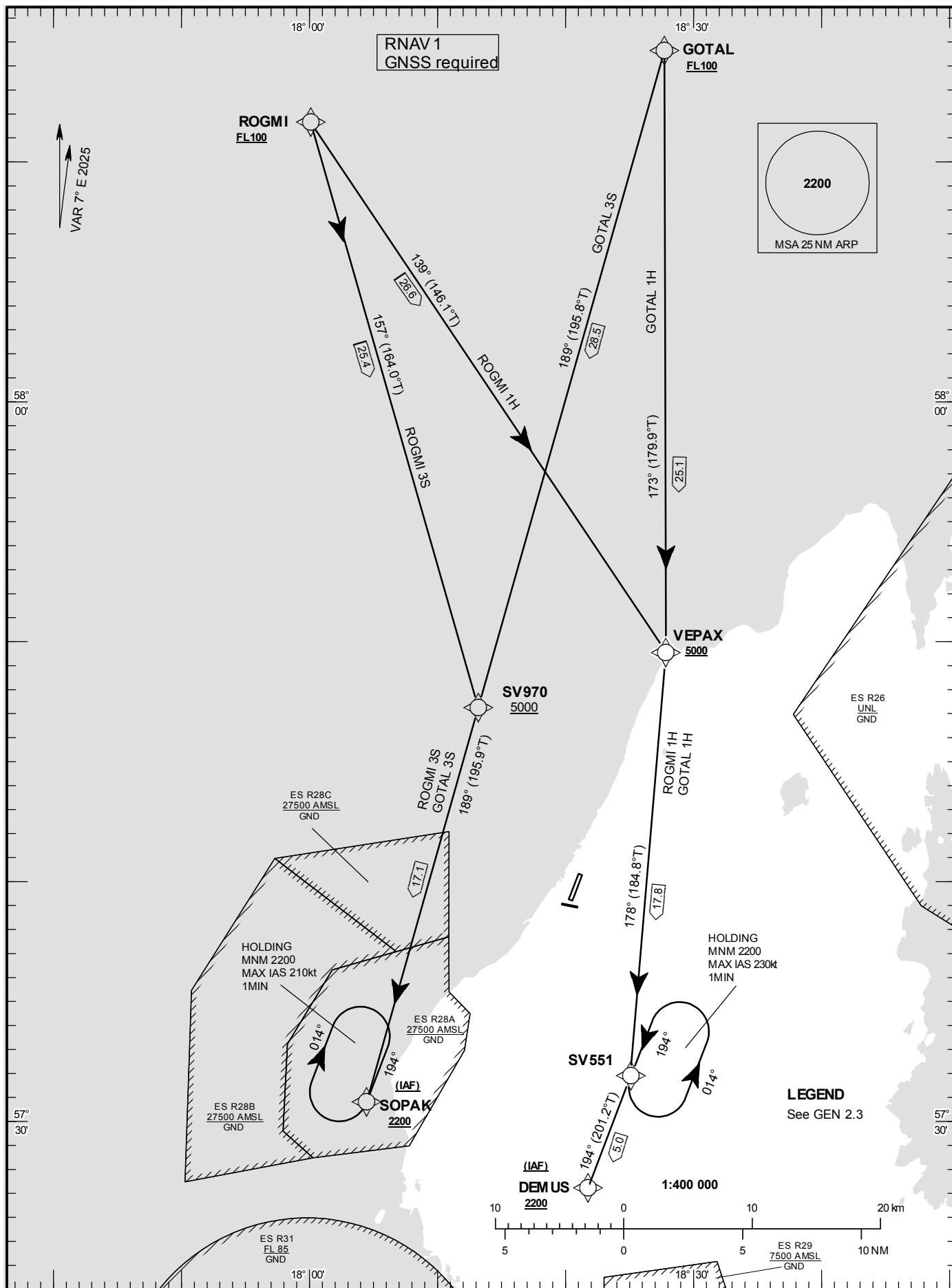


**STANDARD ARRIVAL
CHART - INSTRUMENT
(STAR) - ICAO**

HGT and ALT in ft
BRG are MAG (True)
TA 5000 ft AMSL

VISBY TOWER	120.305
VISBY APPROACH	126.155

GOTAL 1H, ROGMI 1H, GOTAL 3S,
ROGMI 3S



VISBY**Prescribed Coding of RNAV STARs for RWY 03**

REMARK

When descending on initial approach, noise reductions should be achieved using Low Power, Low Drag operating procedures (LP/LD) by maintaining a "clean" aircraft configuration until the final stage of the approach, provided this is consistent with safe operation of the aircraft.

Specified minimum level/ALT at WPT must be adhered to unless specifically cancelled to ATC.

Operators unable flying RNAV shall inform ATC by using phraseology "UNABLE RNAV STAR". ATC will then provide vectors or provide clearance via conventional STAR.

GOTAL 1H (GOTAL ONE HOTEL ARRIVAL)

Path Desc	Waypoint Identifier	Fly-over	Course °M(°T)	Dist (NM)	Turn Dir	Altitude	Speed Limits (kt)	VPA/RDH	Rec Navaid	Navigation Specification
IF	GOTAL	-	-	-	-	+FL100	-	-	-	RNAV 1
TF	VEPAX	N	173°(179.9°)	25.1	-	+5000	-	-	-	RNAV 1
TF	SV551	N	178°(184.8°)	17.8	-	-	-	-	-	RNAV 1
TF	DEMUS	N	194°(201.2°)	5.0	-	+2200	-	-	-	RNAV 1

STAR instruction: GOTAL (FL 100 or above) – VEPAX (5000 ft or above) – SV551 – DEMUS (2200 ft or above)

GOTAL 3S (GOTAL THREE SIERRA ARRIVAL)

Path Desc	Waypoint Identifier	Fly-over	Course °M(°T)	Dist (NM)	Turn Dir	Altitude	Speed Limits (kt)	VPA/RDH	Rec Navaid	Navigation Specification
IF	GOTAL	-	-	-	-	+FL100	-	-	-	RNAV 1
TF	SV970	N	189°(195.8°)	28.5	-	+5000	-	-	-	RNAV 1
TF	SOPAK	N	189°(195.9°)	17.1	-	+2200	-	-	-	RNAV 1

STAR instruction: GOTAL (FL 100 or above) – SV970 (5000 ft or above) – SOPAK (2200 ft or above)

ROGMI 1H (ROGMI ONE HOTEL ARRIVAL)

Path Desc	Waypoint Identifier	Fly-over	Course °M(°T)	Dist (NM)	Turn Dir	Altitude	Speed Limits (kt)	VPA/RDH	Rec Navaid	Navigation Specification
IF	ROGMI	-	-	-	-	+FL100	-	-	-	RNAV 1
TF	VEPAX	N	139°(146.1°)	26.6	-	+5000	-	-	-	RNAV 1
TF	SV551	N	178°(184.8°)	17.8	-	-	-	-	-	RNAV 1
TF	DEMUS	N	194° (201.2°)	5.0	-	+2200	-	-	-	RNAV 1

STAR instruction: ROGMI (FL 100 or above) – VEPAX (5000 ft or above) – SV551 - DEMUS (2200 ft or above)

ROGMI 3S (ROGMI THREE SIERRA ARRIVAL)

Path Desc	Waypoint Identifier	Fly-over	Course °M(°T)	Dist (NM)	Turn Dir	Altitude	Speed Limits (kt)	VPA/RDH	Rec Navaid	Navigation Specification
IF	ROGMI	-	-	-	-	+FL100	-	-	-	RNAV 1
TF	SV970	N	157°(164.0°)	25.4	-	+5000	-	-	-	RNAV 1
TF	SOPAK	N	189°(195.9°)	17.1	-	+2200	-	-	-	RNAV 1

STAR instruction: ROGMI (FL 100 or above) – SV970 (5000 ft or above) – SOPAK (2200 ft or above)