

**INSTRUMENT
APPROACH
CHART - ICAO**

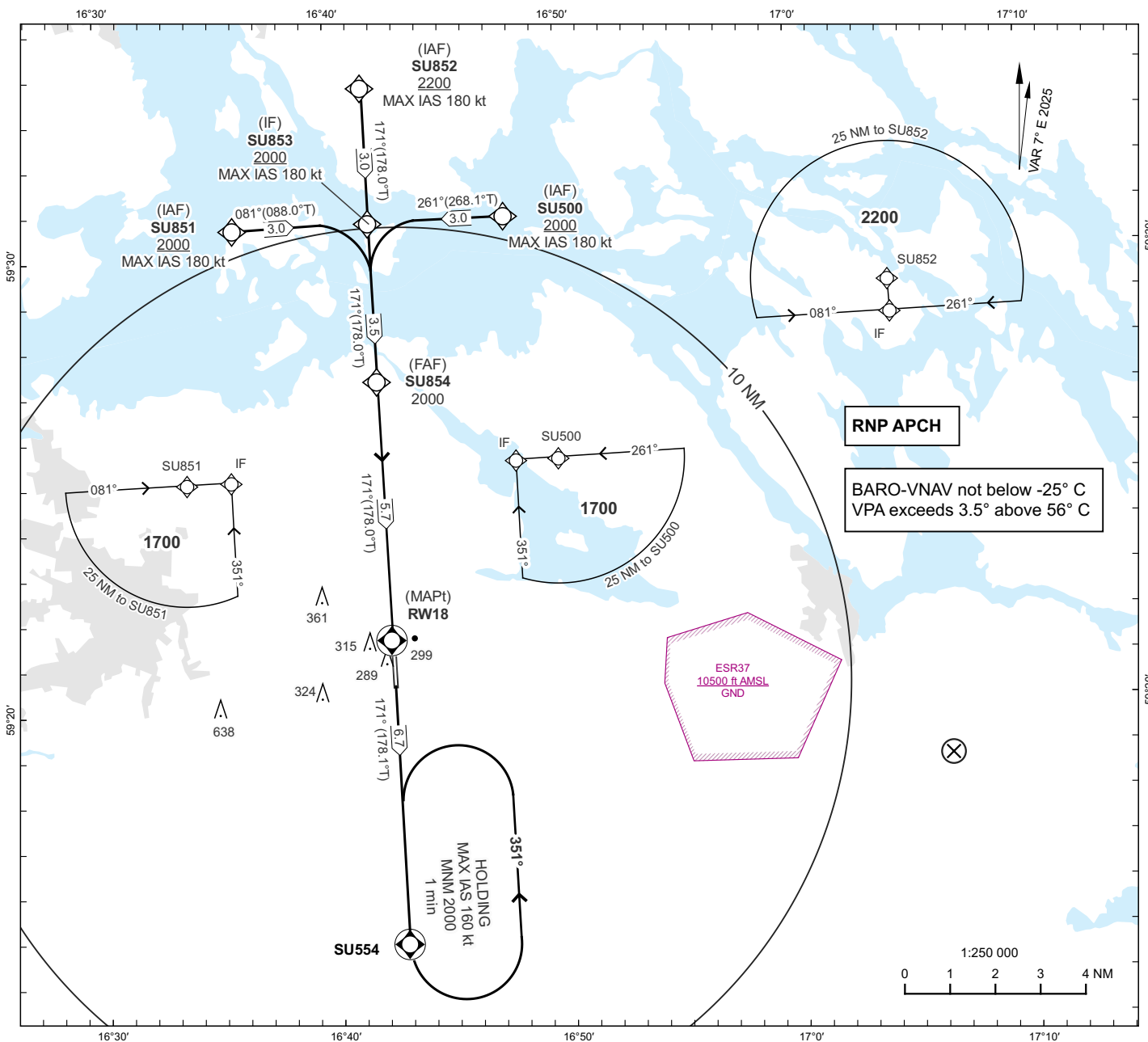
THR ELEV 129 ft AD ELEV 140 ft

OCH are related to THR.
Circling OCH are related to AD ELEV.
BRG are MAG (True).
ALT, HGT and ELEV in ft.

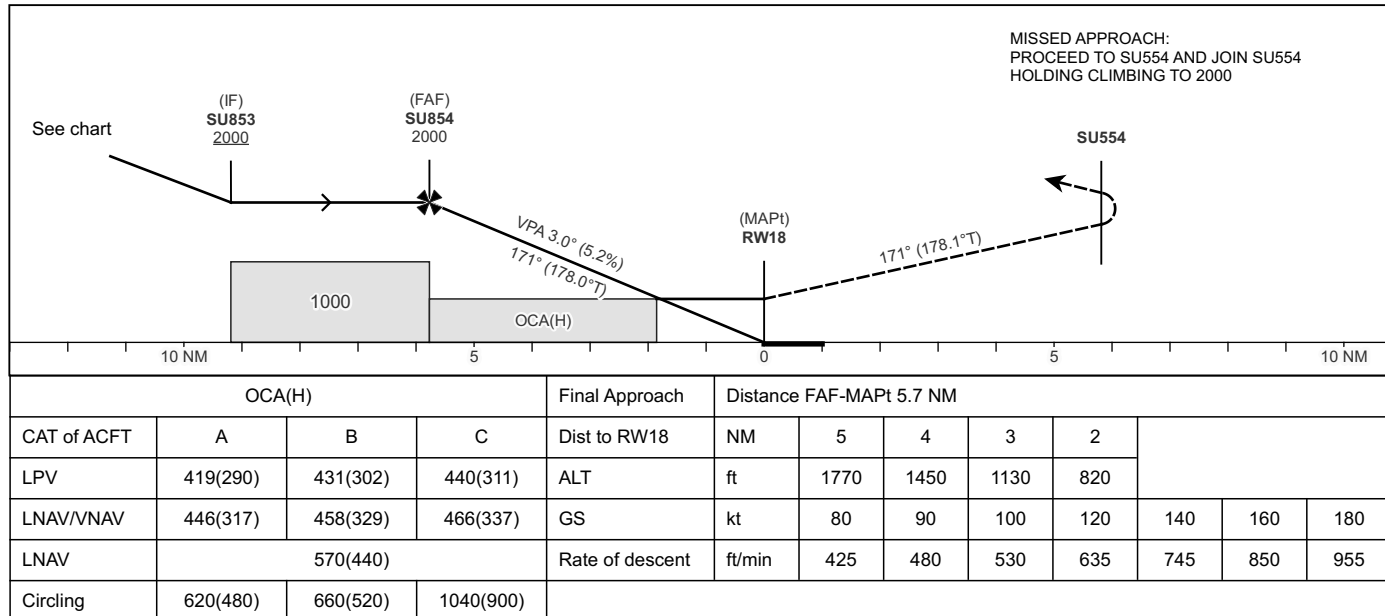
ESKILSTUNA INFORMATION 126.855

**ESKILSTUNA
RNP RWY 18**

EGNOS CH 73289 E 18A



TA 5000 ft AMSL RDH 50.0 ft



MISSED APPROACH:
PROCEED TO SU554 AND JOIN SU554
HOLDING CLIMBING TO 2000

CAT of ACFT	OCA(H)			Final Approach	Distance FAF-MAPt 5.7 NM							
	A	B	C		NM	5	4	3	2			
LPV	419(290)	431(302)	440(311)	Dist to RW18	ft	1770	1450	1130	820			
LNAV/VNAV	446(317)	458(329)	466(337)	GS	kt	80	90	100	120	140	160	180
LNAV	570(440)			Rate of descent	ft/min	425	480	530	635	745	850	955
Circling	620(480)	660(520)	1040(900)									

CHANGE: VAR, OBST, MAX IAS at SU500, SU851, SU852, SU853, SU854, SU554, CAT C, circling new, coding, editorial.

RNP RWY 18 via SU851

Path Term	Waypoint Identifier	Fly-over	Course °M(°T)	Dist (NM)	Turn Dir	Altitude	Speed Limits (kt)	VPA/RDH (°/ft)	Rec Navaid	Nav Spec
IF	SU851	-	-	-	-	+2000	-180	-	-	RNP APCH
TF	SU853	-	081°(088.0°)	3.0	-	+2000	-180	-	-	RNP APCH

RNP RWY 18 via SU500

Path Term	Waypoint Identifier	Fly-over	Course °M(°T)	Dist (NM)	Turn Dir	Altitude	Speed Limits (kt)	VPA/RDH (°/ft)	Rec Navaid	Nav Spec
IF	SU500	-	-	-	-	+2000	-180	-	-	RNP APCH
TF	SU853	-	261°(268.1°)	3.0	-	+2000	-180	-	-	RNP APCH

RNP RWY 18 via SU852

Path Term	Waypoint Identifier	Fly-over	Course °M(°T)	Dist (NM)	Turn Dir	Altitude	Speed Limits (kt)	VPA/RDH (°/ft)	Rec Navaid	Nav Spec
IF	SU852	-	-	-	-	+2200	-180	-	-	RNP APCH
TF	SU853	-	171°(178.0°)	3.0	-	+2000	-180	-	-	RNP APCH

Path Term	Waypoint Identifier	Fly-over	Course °M(°T)	Dist (NM)	Turn Dir	Altitude	Speed Limits (kt)	VPA/RDH (°/ft)	Rec Navaid	Nav Spec
IF	SU853	-	-	-	-	+2000	-180	-	-	RNP APCH
TF	SU854	-	171°(178.0°)	3.5	-	+2000	-	-	-	RNP APCH
TF	RW18	Y	171°(178.0°)	5.7	-	@179	-	-3.0/50	-	RNP APCH
TF	SU554	Y	171°(178.0°)	6.7	-	-	-	-	-	RNP APCH

ESSU Holding SU554

Path Term	Waypoint Identifier	Fly-over	Course °M(°T)	Dist (NM)	Turn Dir	Altitude	Speed Limits (kt)	VPA/RDH (°/ft)	Rec Navaid	Nav Spec
HM	SU554	Y	171°(178.0°)	-	L	+2000	-160	-	-	RNP 1

FAS Data Block

RNP RWY 18

Input data

Operation Type	0
SBAS Provider	1 (EGNOS)
Airport Identifier	ESSU
Runway	18
Runway Letter	0 (None)
Approach Performance Designator	0
Route Indicator	
Reference Path Data Selector	0
Reference Path Identifier	E18A
LTP/FTP Latitude	592134.3390N
LTP/FTP Longitude	0164228.2135E
LTP/FTP Ellipsoidal Height (metres)	65.0
FPAP Latitude	592033.4240N
Delta FPAP Latitude (seconds)	-60.9150
FPAP Longitude	0164232.2805E
Delta FPAP Longitude (seconds)	4.0670
Threshold Crossing Height	50.0
TCH Units Selector	0 (feet)
Glidepath Angle (degrees)	3.00
Course Width (metres)	105.00
Length Offset (metres)	0
HAL (metres)	40.0
VAL (metres)	50.0

Output data

Data Block	10 15 13 13 05 12 00 00 01 38 31 05 06 6F 79 19 EB 93 2B 07 8A 16 1A 24 FE C6 1F 00 F4 01 2C 01 64 00 C8 FA 70 B5 18 92
Calculated CRC Value	70B51892
Supplied CRC Value	70B51892
Comparison Result	OK

Required Additional Data

ICAO Code	ES
LTP/FTP Orthometric Height (metres)	39.4