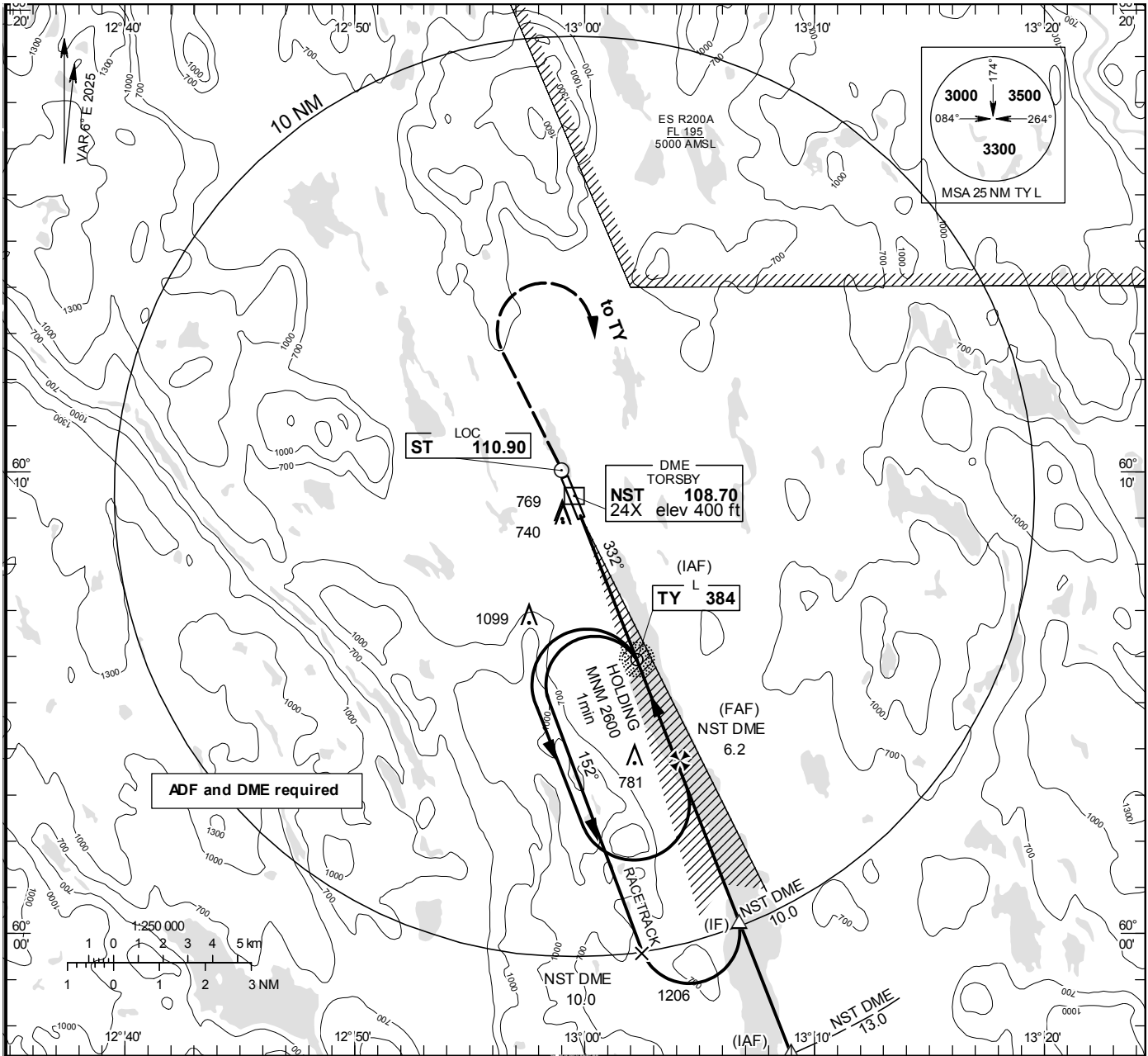


**INSTRUMENT  
APPROACH  
CHART – ICAO**

**THR ELEV 394 ft, AD ELEV 394 ft**  
OCH are related to THR.  
Circling OCH are related to AD ELEV.  
BRG are MAG  
ALT, HGT and ELEV in ft.

TORSBY INFORMATION 122.055

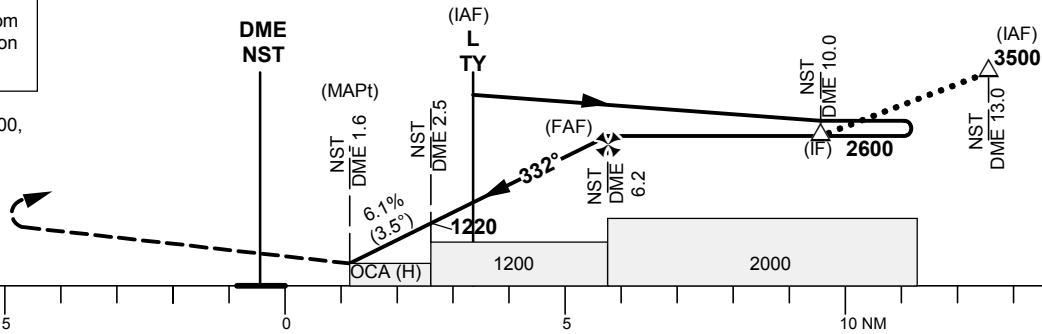


TA 5000 ft AMSL

\*Timing not authorized for defining the MAPt

NOTE:  
LOC may only be used within ±10° from inbound track. False course information may occur east of this sector.

CLIMB STRAIGHT AHEAD TO 3100,  
TURN RIGHT TO TY.  
JOIN TY HOLDING.



Cat of ACFT	OCA (H)		Final approach					
	A	B	DME NST NM	2	3	4	5	6
Straight-in Approach	810 (420)		ALT	1020	1400	1770	2140	2510
Circling	1070 (680)      1400 (1010)		GS	kt	80	100	120	140
			Time	min:s	3:29	2:47	2:19	1:59
			Rate of descent	ft/min	495	620	745	865

CHANGE: ES R200A remark removed