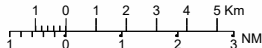


**VISUAL APPROACH CHART - ICAO**

1:250000



**AD ELEV 47 FEET**

ELEV and ALT in ft  
HGT in ft above AD ELEV

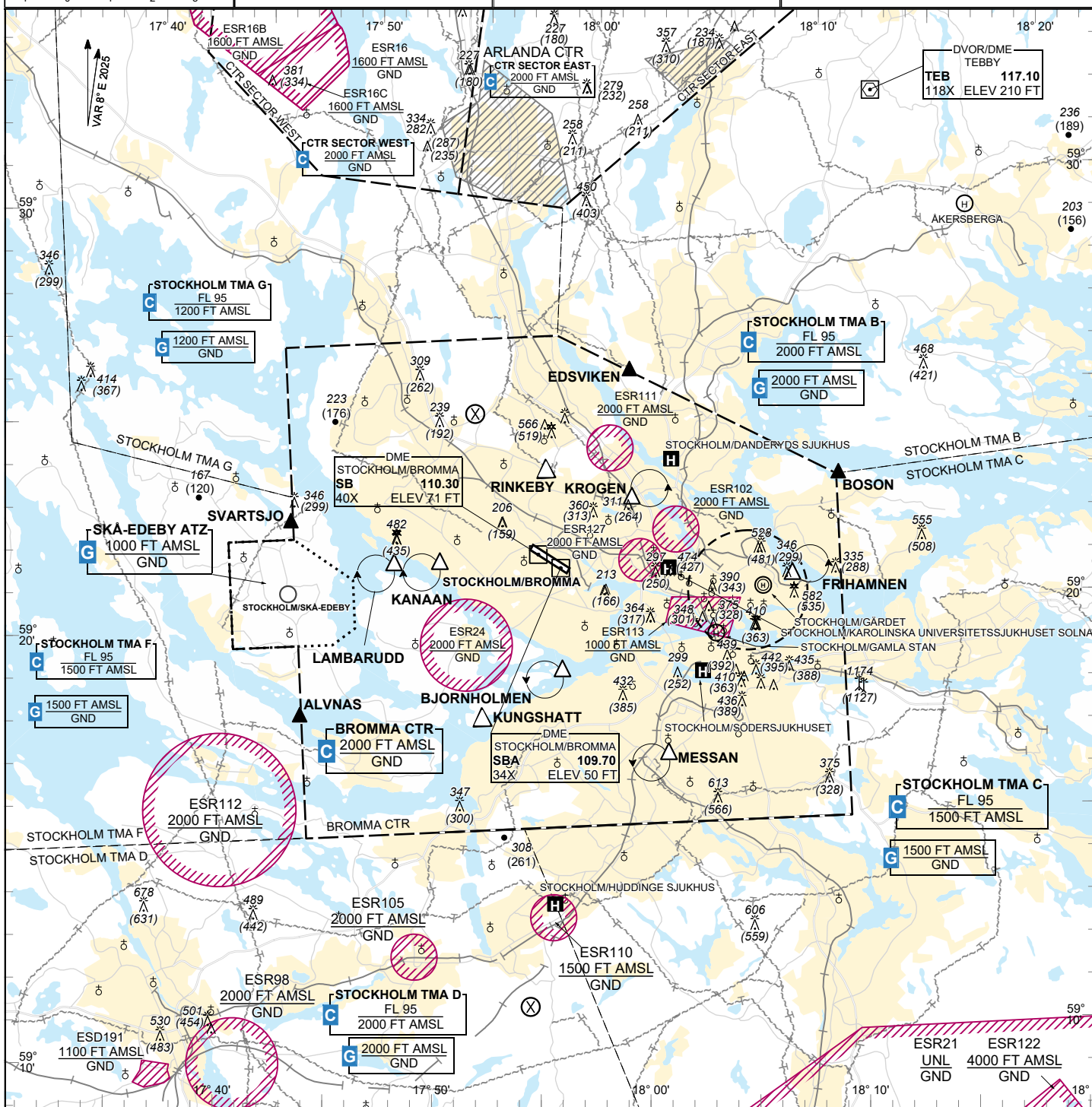
**TA 5000 AMSL**

**BROMMA TOWER 118.105**

**BROMMA GROUND 121.605**

**BROMMA ATIS 122.455**

**STOCKHOLM/BROMMA SWEDEN**



**Communication failure**

See page AD 2 ESSB VFR Procedures RWY 12/30

RWY NR	THR ELEV	PAPI (MEHT)
12	46.5 ft	Left/3.50° (56 ft)
30	42.8 ft	Left/3.50° (38 ft)

**Holding**

- BJORNHOLMEN:** Hold over Björnholmen, south west of point 591839N 0175651E
- FRIHAMNEN:** Hold over the harbour Frihamnen, north east of point 592041N 0180735E
- KANAAN:** Hold over the swimming area Kanaanbadet, south west of point 592117N 0175127E
- KROGEN:** Hold over intersection between roads E18 and E4, north east of point 592237N 0180023E
- LAMBARUDD:** Hold over Lambarudd, south west of point 592118N 0174921E
- MESSAN:** Hold over the exhibition hall, south west of point 591636N 0180133E

**Remark**

Obstacles below 197 ft AGL not shown in CTR

**Entry / exit point**

EDSVIKEN	592536N 0180032E
BOSON	592259N 0180954E
ALVNAS	591750N 0174444E
SVARTSJO	592223N 0174442E

**Legend**

See GEN 2.3

**Reporting point**

RINKEBY	592320N 0175630E
KUNGSHATT	591735N 0175305E

CHANGE: VAR, OBST., Editorial