

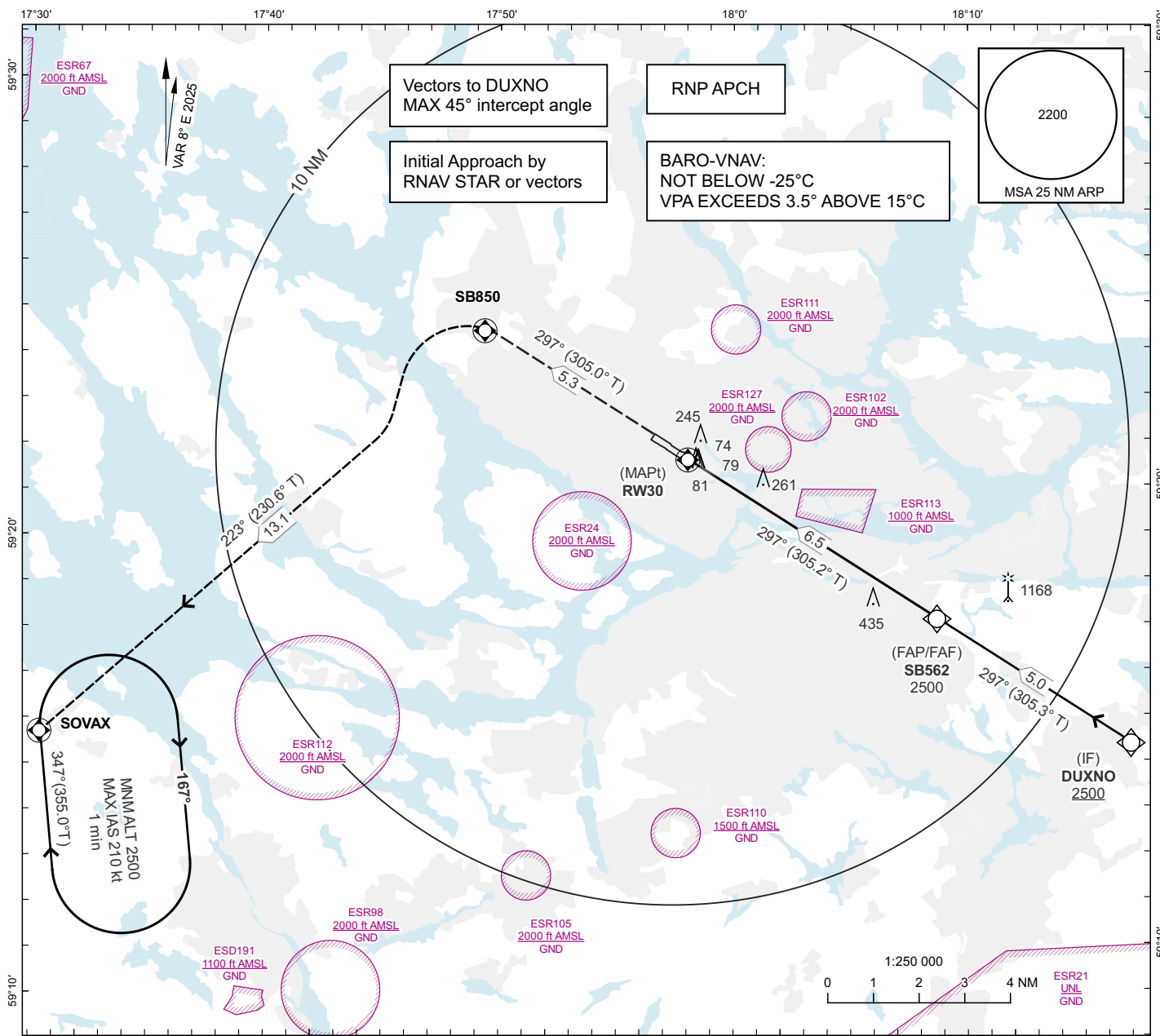
AIP SVERIGE/SWEDEN

**INSTRUMENT
APPROACH
CHART - ICAO**

THR ELEV 42.8 ft AD ELEV 47 ft
OCH are related to THR.
BRG are MAG (True).
ALT, HGT and ELEV in ft.

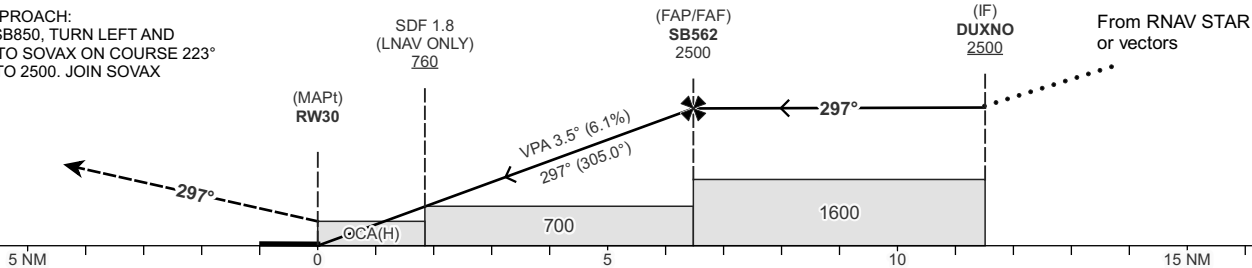
BROMMA TOWER	118.105
STOCKHOLM CONTROL	120.155
BROMMA ATIS	122.455

**STOCKHOLM/BROMMA
RNP RWY 30
EGNOS CH 43837 E 30A**



TA 5000 ft AMSL RDH 50.0 ft

MISSED APPROACH:
CLIMB TO SB850, TURN LEFT AND
PROCEED TO SOVAX ON COURSE 223°
CLIMBING TO 2500. JOIN SOVAX
HOLDING.



CAT of ACFT	OCA(H)			Final Approach	Distance FAF-MAPt 6.5 NM					
	A	B	C		Dist to RW30	NM	2	3	4	5
LPV	223(181)	231(189)	241(199)	ALT	ft	836	1208	1579	1951	2323
LNAV/VNAV	390(348)	403(361)	416(374)	GS	kt	80	100	120	140	160
LNAV	520(480)			Rate of descent	ft/min	495	620	745	865	990

CHANGE: OCA(H), Missed APCH, holding, VAR.

RNP RWY 30

Path Term	Waypoint Identifier	Fly-over	Course °M(°T)	Dist (NM)	Turn Dir	Altitude	Speed Limits (kt)	VPA/RDH (°/ft)	Rec Navaid	Nav Spec
IF	DUXNO	-	-	-	-	+2500	-	-	-	RNP APCH
TF	SB562	-	297° (305.3°)	5.0	-	@2500	-	-	-	RNP APCH
TF	RW30	Y	297° (305.2°)	6.5	-	@93	-	-3.5/50	-	RNP APCH
TF	SB850	Y	297° (305.0°)	5.3	-	-	-	-	-	RNP APCH
CF	SOVAX	Y	223° (230.6°)	13.1	L	-	-	-	ARL	RNP APCH
HM	SOVAX	-	347° (355.0°)	-	R	+2500	-210	-	-	RNP APCH

FAS Data Block

RNP RWY 30

Input data

Operation Type	0
SBAS Provider	1 (EGNOS)
Airport Identifier	ESSB
Runway	30
Runway Letter	0 (None)
Approach Performance Designator	0
Route Indicator	
Reference Path Data Selector	0
Reference Path Identifier	E30A
LTP/FTP Latitude	592100.2800N
LTP/FTP Longitude	0175713.1700E
LTP/FTP Ellipsoidal Height (metres)	36.2
FPAP Latitude	592137.4615N
Delta FPAP Latitude (seconds)	37.1815
FPAP Longitude	0175529.2365E
Delta FPAP Longitude (seconds)	-103.9335
Threshold Crossing Height	50.0
TCH Units Selector	0 (feet)
Glidepath Angle (degrees)	3.50
Course Width (metres)	105.00
Length Offset (metres)	336
HAL (metres)	40.0
VAL (metres)	35.0

Output data

Data Block	10 02 13 13 05 1E 00 00 01 30 33 05 F0 64 78 19 A4 72 B4 07 6A 15 7B 22 01 05 D4 FC F4 01 5E 01 64 2A C8 AF 80 A1 A2 4F
Calculated CRC Value	80A1A24F
Supplied CRC Value	80A1A24F
Comparison Result	OK