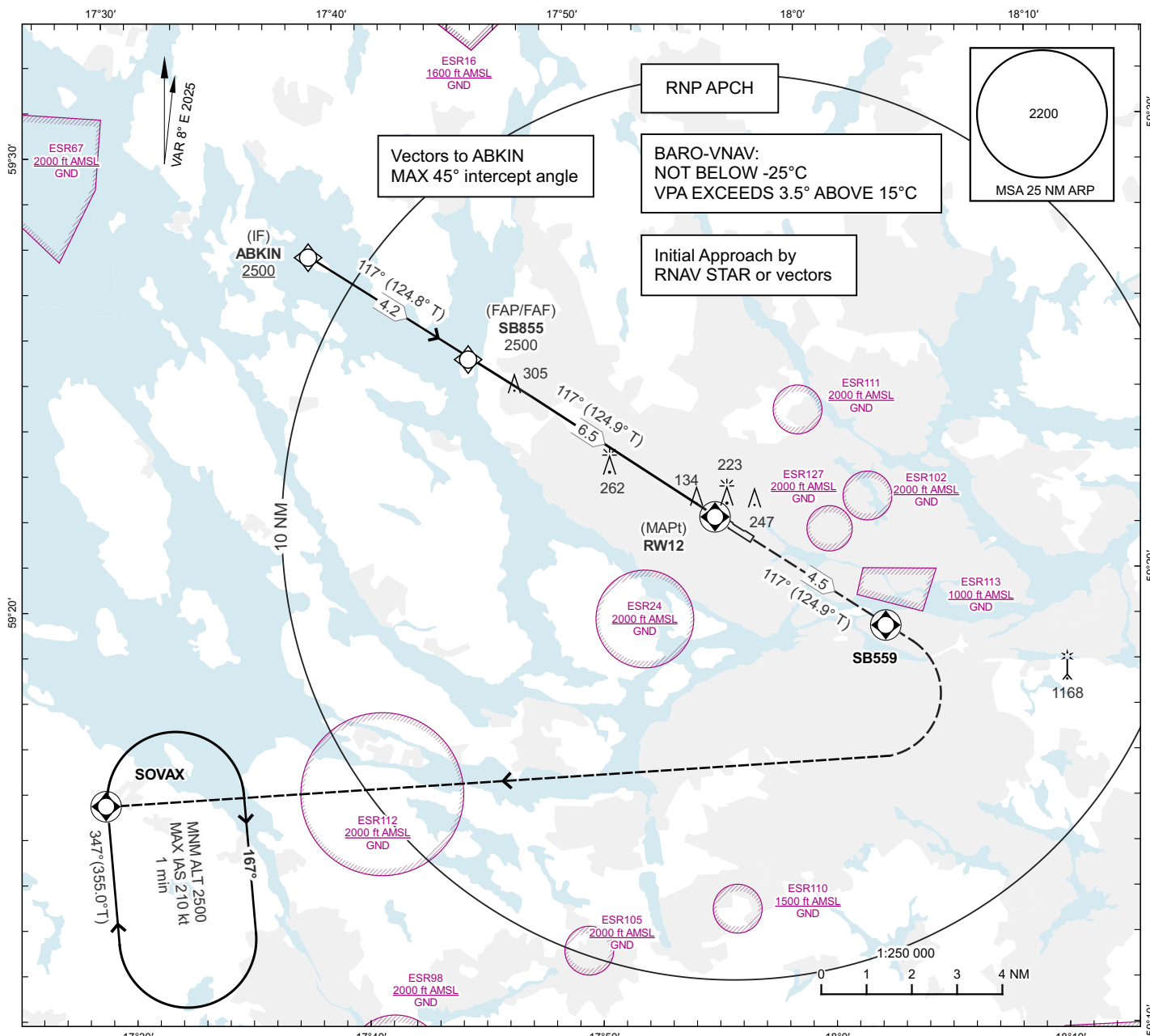


**INSTRUMENT  
APPROACH  
CHART - ICAO**

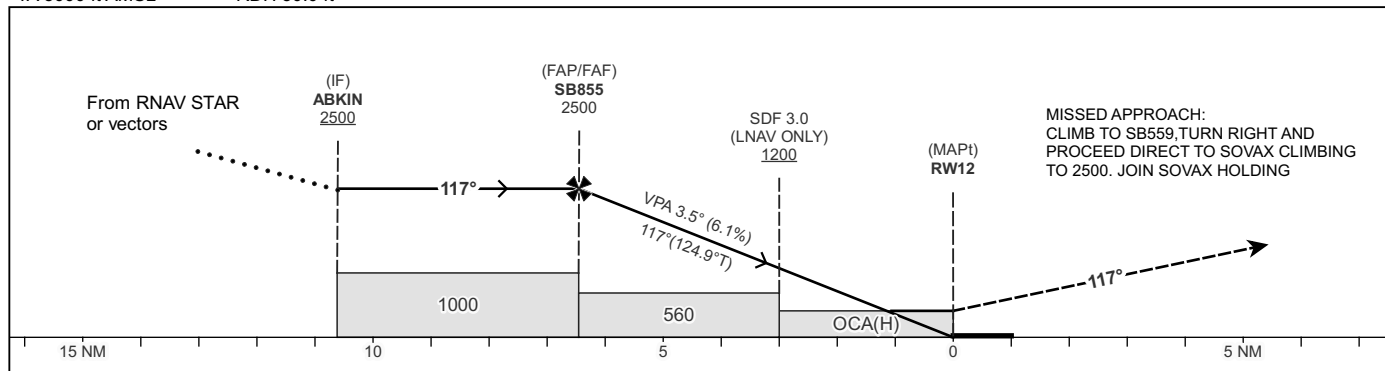
**THR ELEV 46.5 ft AD ELEV 47 ft**  
OCH are related to THR.  
BRG are MAG (True).  
ALT, HGT and ELEV in ft.

BROMMA TOWER	118.105
STOCKHOLM CONTROL	120.155
BROMMA ATIS	122.455

**STOCKHOLM/BROMMA  
RNP RWY 12  
EGNOS CH 92008 E 12A**



TA 5000 ft AMSL RDH 50.0 ft



OCA(H)				Final Approach	Distance FAF-MAPt 6.5 NM					
CAT of ACFT	A	B	C	Dist to RWY12	NM	6	5	4	3	2
LPV	230(184)	237(191)	250(204)	ALT	ft	2326	1955	1583	1211	840
LNAV/VNAV	368(322)	381(335)	396(350)	GS	kt	80	100	120	140	160
LNAV	520(480)			Rate of descent	ft/min	495	620	745	865	990

CHANGE: OCA(H), holding, VAR.

**RNP RWY 12**

Path Term	Waypoint Identifier	Fly-over	Course °M(°T)	Dist (NM)	Turn Dir	Altitude	Speed Limits (kt)	VPA/RDH (°/ft)	Rec Navaid	Nav Spec
IF	ABKIN	-	-	-	-	+2500	-	-	-	RNP APCH
TF	SB855	-	117° (124.8°)	4.2	-	@2500	-	-	-	RNP APCH
TF	RW12	Y	117° (124.9°)	6.5	-	@97	-	-3.5/50	-	RNP APCH
TF	SB559	Y	117° (124.9°)	4.5	-	-	-	-	-	RNP APCH
DF	SOVAX	Y	-	-	R	-	-	-	-	RNP APCH
HM	SOVAX	-	347° (355.0°)	-	R	+2500	-210	-	-	RNP APCH

## FAS Data Block

## RNP RWY 12

## Input data

Operation Type	0
SBAS Provider	1 (EGNOS)
Airport Identifier	ESSB
Runway	12
Runway Letter	0 (None)
Approach Performance Designator	0
Route Indicator	
Reference Path Data Selector	0
Reference Path Identifier	E12A
LTP/FTP Latitude	592131.2100N
LTP/FTP Longitude	0175546.7200E
LTP/FTP Ellipsoidal Height (metres)	37.4
FPAP Latitude	592100.2800N
Delta FPAP Latitude (seconds)	-30.9300
FPAP Longitude	0175713.1700E
Delta FPAP Longitude (seconds)	86.4500
Threshold Crossing Height	50.0
TCH Units Selector	0 (feet)
Glidepath Angle (degrees)	3.50
Course Width (metres)	105.00
Length Offset (metres)	0
HAL (metres)	40.0
VAL (metres)	35.0

## Output data

Data Block	10 02 13 13 05 0C 00 00 01 32 31 05 94 56 79 19 40 CF B1 07 76 15 5C 0E FF 64 A3 02 F4 01 5E 01 64 00 C8 AF C7 B4 21 B7
Calculated CRC Value	C7B421B7
Supplied CRC Value	C7B421B7
Comparison Result	OK