

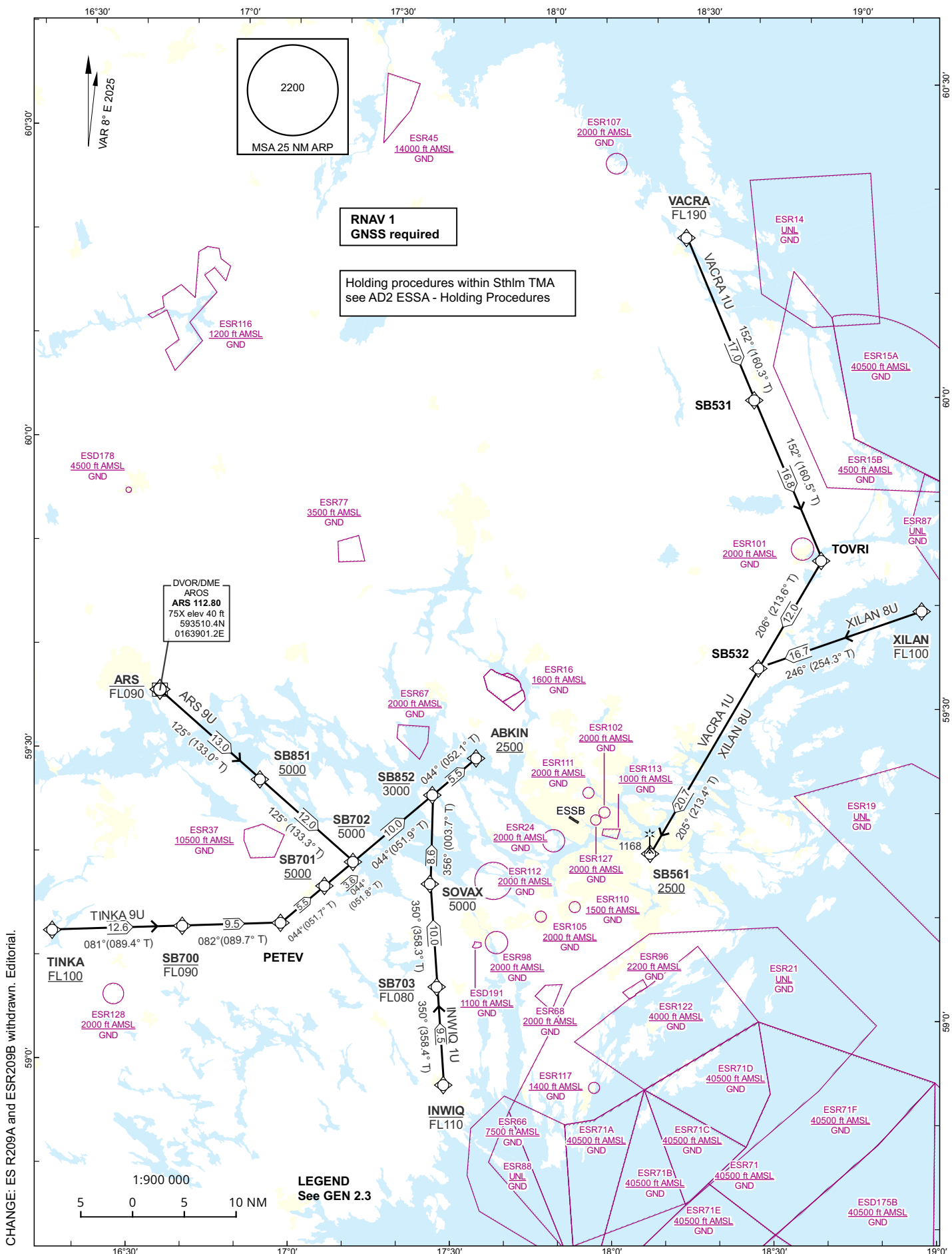
AIP SVERIGE/SWEDEN  
**STANDARD INSTRUMENT  
ARRIVAL CHART (STAR) -  
ICAO**

HGT and ALT in ft  
BRG are MAG (True)  
TA 5000 ft AMSL

|                    |         |
|--------------------|---------|
| BROMMA TOWER       | 118.105 |
| ARLANDA ATIS       | 122.455 |
| STOCKHOLM APPROACH | 123.755 |

**STOCKHOLM/BROMMA  
RNAV RWY 12**

ARS 9U, INWIK 1U, TINKA 9U, VACRA 1U, XILAN 8U



CHANGE: ES R209A and ESR209B withdrawn. Editorial.

## Prescribed Coding of RNAV STAR for RWY 12

### REMARK:

Descent to a minimum altitude for an arrival route must not be initiated until an ATC clearance to this altitude or an approach clearance has been received.

Aircraft to STOCKHOLM/Bromma shall not be operated at an airspeed of more than 250 kt IAS below FL100 unless otherwise instructed.

All RNAV STARs are based on GNSS for position update.

Operators receiving clearance via RNAV STAR and are unable flying RNAV1 shall inform ATC by using phraseology "UNABLE RNAV STAR". ATC will then provide vectors or issue clearance to a navigation aid.

If the airborne RNAV equipment fails or if the position update is malfunctioning, ATC shall be informed as soon as practicable. ATC will then provide vectors

## ARS 9U (AROS NINE UNIFORM ARRIVAL)

| Path Term | Waypoint Identifier | Fly-over | Course °M(°T) | Dist (NM) | Turn Dir | Altitude (ft AMSL) | Speed Limits (kt) | VPA/RDH (°/ft) | Rec Navaid | Nav Spec |
|-----------|---------------------|----------|---------------|-----------|----------|--------------------|-------------------|----------------|------------|----------|
| IF        | ARS                 | -        | -             | -         | -        | -FL090             | -                 | -              | -          | RNAV 1   |
| TF        | SB851               | -        | 125° (133.0°) | 13.0      | -        | +5000              | -                 | -              | -          | RNAV 1   |
| TF        | SB702               | -        | 125° (133.3°) | 12.0      | -        | -5000              | -                 | -              | -          | RNAV 1   |
| TF        | SB852               | -        | 044° (051.9°) | 10.0      | L        | -3000              | -                 | -              | -          | RNAV 1   |
| TF        | ABKIN               | -        | 044° (052.1°) | 5.5       | -        | +2500              | -                 | -              | -          | RNAV 1   |

STAR instruction: ARS (FL090 or below) – SB851 (5000 ft or above) – SB702 (5000 ft or below) – SB852 (3000 ft or below) - ABKIN (2500 ft or above)

## INWIQ 1U (INWIQ ONE UNIFORM ARRIVAL)

| Path Term | Waypoint Identifier | Fly-over | Course °M(°T) | Dist (NM) | Turn Dir | Altitude (ft AMSL) | Speed Limits (kt) | VPA/RDH (°/ft) | Rec Navaid | Nav Spec |
|-----------|---------------------|----------|---------------|-----------|----------|--------------------|-------------------|----------------|------------|----------|
| IF        | INWIQ               | -        | -             | -         | -        | -FL110             | -                 | -              | -          | RNAV 1   |
| TF        | SB703               | -        | 350°(358.4°)  | 9.5       | -        | -FL080             | -                 | -              | -          | RNAV 1   |
| TF        | SOVAX               | -        | 350°(358.3°)  | 10.0      | -        | -5000              | -                 | -              | -          | RNAV 1   |
| TF        | SB852               | -        | 356°(003.7°)  | 8.6       | -        | -3000              | -                 | -              | -          | RNAV 1   |
| TF        | ABKIN               | -        | 044°(052.1°)  | 5.5       | -        | +2500              | -                 | -              | -          | RNAV 1   |

STAR instruction: INWIQ (FL110 or below) – SB703 (FL080 or below) – SOVAX (5000 ft or below) – SB852 (3000 ft or below) – ABKIN (2500 ft or above).

**STOCKHOLM/BROMMA****TINKA 9U (TINKA NINE UNIFORM ARRIVAL)**

| Path Term | Waypoint Identifier | Fly-over | Course °M(°T) | Dist (NM) | Turn Dir | Altitude (ft AMSL) | Speed Limits (kt) | VPA/RDH (°/ft) | Rec Navaid | Nav Spec |
|-----------|---------------------|----------|---------------|-----------|----------|--------------------|-------------------|----------------|------------|----------|
| IF        | TINKA               | -        | -             | -         | -        | +FL100             | -                 | -              | -          | RNAV 1   |
| TF        | SB700               | -        | 081°(089.4°)  | 12.6      | -        | -FL090             | -                 | -              | -          | RNAV 1   |
| TF        | PETEV               | -        | 082°(089.7°)  | 9.5       | -        | -                  | -                 | -              | -          | RNAV 1   |
| TF        | SB701               | -        | 044°(051.7°)  | 5.5       | -        | +5000              | -                 | -              | -          | RNAV 1   |
| TF        | SB702               | -        | 044°(051.8°)  | 3.6       | -        | -5000              | -                 | -              | -          | RNAV 1   |
| TF        | SB852               | -        | 044°(051.9°)  | 10.0      | -        | -3000              | -                 | -              | -          | RNAV 1   |
| TF        | ABKIN               | -        | 044°(052.1°)  | 5.5       | -        | +2500              | -                 | -              | -          | RNAV 1   |

STAR instruction: TINKA (FL100 or above) – SB700 (FL090 or below) – PETEV – SB701 (5000 ft or above) – SB702 (5000 ft or below) – SB852 (3000 ft or below) – ABKIN (2500 ft or above)

**VACRA 1U (VACRA ONE UNIFORM ARRIVAL)**

| Path Term | Waypoint Identifier | Fly-over | Course °M(°T) | Dist (NM) | Turn Dir | Altitude (ft AMSL) | Speed Limits (kt) | VPA/RDH (°/ft) | Rec Navaid | Nav Spec |
|-----------|---------------------|----------|---------------|-----------|----------|--------------------|-------------------|----------------|------------|----------|
| IF        | VACRA               | -        | -             | -         | -        | - FL190            | -                 | -              | -          | RNAV 1   |
| TF        | SB531               | -        | 152°(160.3°)  | 17.0      | -        | -                  | -                 | -              | -          | RNAV 1   |
| TF        | TOVRI               | -        | 152°(160.5°)  | 16.8      | -        | -                  | -                 | -              | -          | RNAV 1   |
| TF        | SB532               | -        | 206°(213.6°)  | 12.0      | -        | -                  | -                 | -              | -          | RNAV 1   |
| TF        | SB561               | -        | 205°(213.4°)  | 20.7      | -        | +2500              | -                 | -              | -          | RNAV 1   |

STAR instruction: VACRA (FL190 or below) – SB531 – TOVRI – SB532 – SB561 (2500 ft or above)

**XILAN 8U (XILAN EIGHT UNIFORM ARRIVAL)**

| Path Term | Waypoint Identifier | Fly-over | Course °M(°T) | Dist (NM) | Turn Dir | Altitude (ft AMSL) | Speed Limits (kt) | VPA/RDH (°/ft) | Rec Navaid | Nav Spec |
|-----------|---------------------|----------|---------------|-----------|----------|--------------------|-------------------|----------------|------------|----------|
| IF        | XILAN               | -        | -             | -         | -        | - FL100            | -                 | -              | -          | RNAV 1   |
| TF        | SB532               | -        | 246°(254.3°)  | 16.7      | -        | -                  | -                 | -              | -          | RNAV 1   |
| TF        | SB561               | -        | 205°(213.4°)  | 20.7      | -        | +2500              | -                 | -              | -          | RNAV 1   |

STAR instruction: XILAN (FL100 or below) – SB532 – SB561 (2500 ft or above)