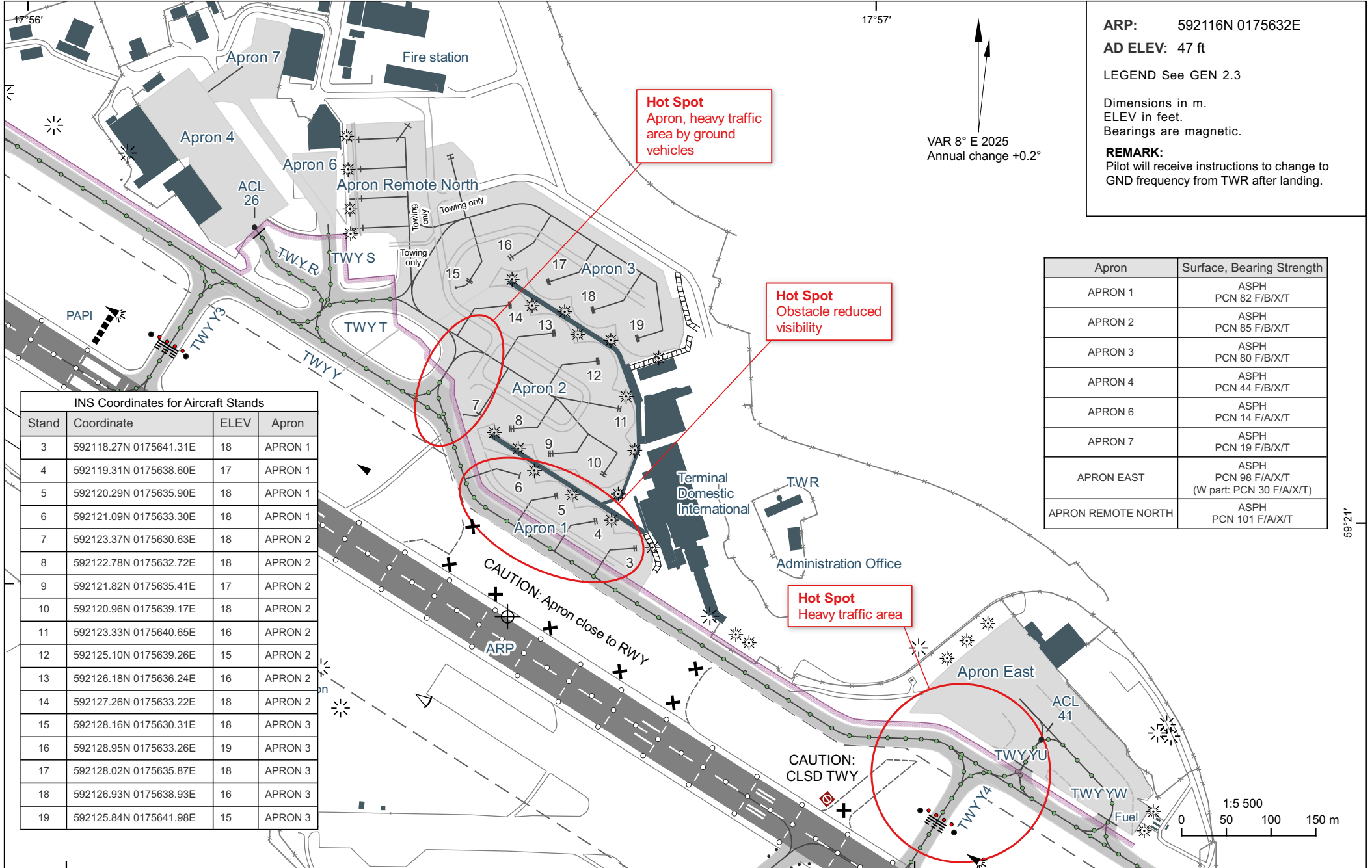


**PARKING/DOCKING CHART - ICAO**

TWR: 118.105

**STOCKHOLM/BROMMA**



**ARP:** 592116N 0175632E  
**AD ELEV:** 47 ft  
**LEGEND** See GEN 2.3  
 Dimensions in m.  
 ELEV in feet.  
 Bearings are magnetic.  
**REMARK:**  
 Pilot will receive instructions to change to GND frequency from TWR after landing.

Apron	Surface, Bearing Strength
APRON 1	ASPH PCN 82 F/B/X/T
APRON 2	ASPH PCN 85 F/B/X/T
APRON 3	ASPH PCN 80 F/B/X/T
APRON 4	ASPH PCN 44 F/B/X/T
APRON 6	ASPH PCN 14 F/A/X/T
APRON 7	ASPH PCN 19 F/B/X/T
APRON EAST	ASPH PCN 98 F/A/X/T (W part: PCN 30 F/A/X/T)
APRON REMOTE NORTH	ASPH PCN 101 F/A/X/T

Stand	Coordinate	ELEV	Apron
3	592118.27N 0175641.31E	18	APRON 1
4	592119.31N 0175638.60E	17	APRON 1
5	592120.29N 0175635.90E	18	APRON 1
6	592121.09N 0175633.30E	18	APRON 1
7	592123.37N 0175630.63E	18	APRON 2
8	592122.78N 0175632.72E	18	APRON 2
9	592121.82N 0175635.41E	17	APRON 2
10	592120.96N 0175639.17E	18	APRON 2
11	592123.33N 0175640.65E	16	APRON 2
12	592125.10N 0175639.26E	15	APRON 2
13	592126.18N 0175636.24E	16	APRON 2
14	592127.26N 0175633.22E	18	APRON 2
15	592128.16N 0175630.31E	18	APRON 3
16	592128.95N 0175633.26E	19	APRON 3
17	592128.02N 0175635.87E	18	APRON 3
18	592126.93N 0175638.93E	16	APRON 3
19	592125.84N 0175641.98E	15	APRON 3

CHANGE: VAR