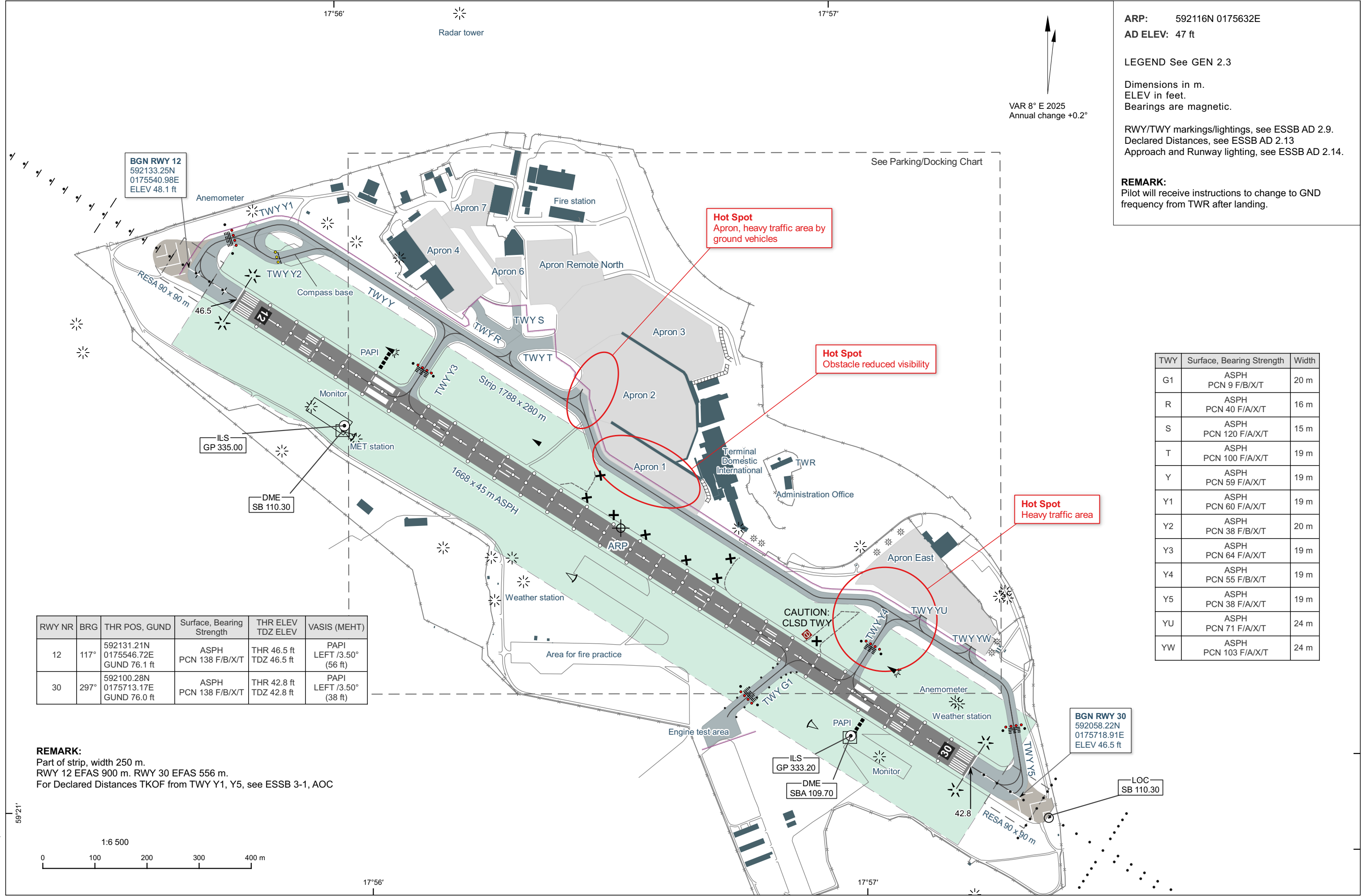


AERODROME CHART - ICAO

TWR: 118.105

STOCKHOLM/BROMMA



ARP: 592116N 0175632E
AD ELEV: 47 ft

LEGEND See GEN 2.3

Dimensions in m.
ELEV in feet.
Bearings are magnetic.

RWY/TWY markings/lightings, see ESSB AD 2.9.
Declared Distances, see ESSB AD 2.13
Approach and Runway lighting, see ESSB AD 2.14.

REMARK:
Pilot will receive instructions to change to GND frequency from TWR after landing.

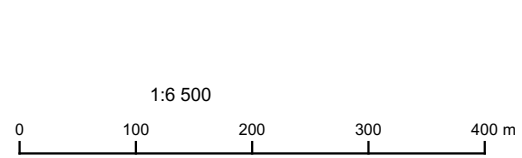
VAR 8° E 2025
Annual change +0.2°

See Parking/Docking Chart

RWY NR	BRG	THR POS, GUND	Surface, Bearing Strength	THR ELEV TDZ ELEV	VASIS (MEHT)
12	117°	592131.21N 0175546.72E GUND 76.1 ft	ASPH PCN 138 F/B/X/T	THR 46.5 ft TDZ 46.5 ft	PAPI LEFT /3.50° (56 ft)
30	297°	592100.28N 0175713.17E GUND 76.0 ft	ASPH PCN 138 F/B/X/T	THR 42.8 ft TDZ 42.8 ft	PAPI LEFT /3.50° (38 ft)

TWY	Surface, Bearing Strength	Width
G1	ASPH PCN 9 F/B/X/T	20 m
R	ASPH PCN 40 F/A/X/T	16 m
S	ASPH PCN 120 F/A/X/T	15 m
T	ASPH PCN 100 F/A/X/T	19 m
Y	ASPH PCN 59 F/A/X/T	19 m
Y1	ASPH PCN 60 F/A/X/T	19 m
Y2	ASPH PCN 38 F/B/X/T	20 m
Y3	ASPH PCN 64 F/A/X/T	19 m
Y4	ASPH PCN 55 F/B/X/T	19 m
Y5	ASPH PCN 38 F/A/X/T	19 m
YU	ASPH PCN 71 F/A/X/T	24 m
YW	ASPH PCN 103 F/A/X/T	24 m

REMARK:
Part of strip, width 250 m.
RWY 12 EFAS 900 m. RWY 30 EFAS 556 m.
For Declared Distances TKOF from TWY Y1, Y5, see ESSB 3-1, AOC



CHANGE: VAR, Editorial.