

VISUAL APPROACH CHART - ICAO

AD ELEV 138 FEET

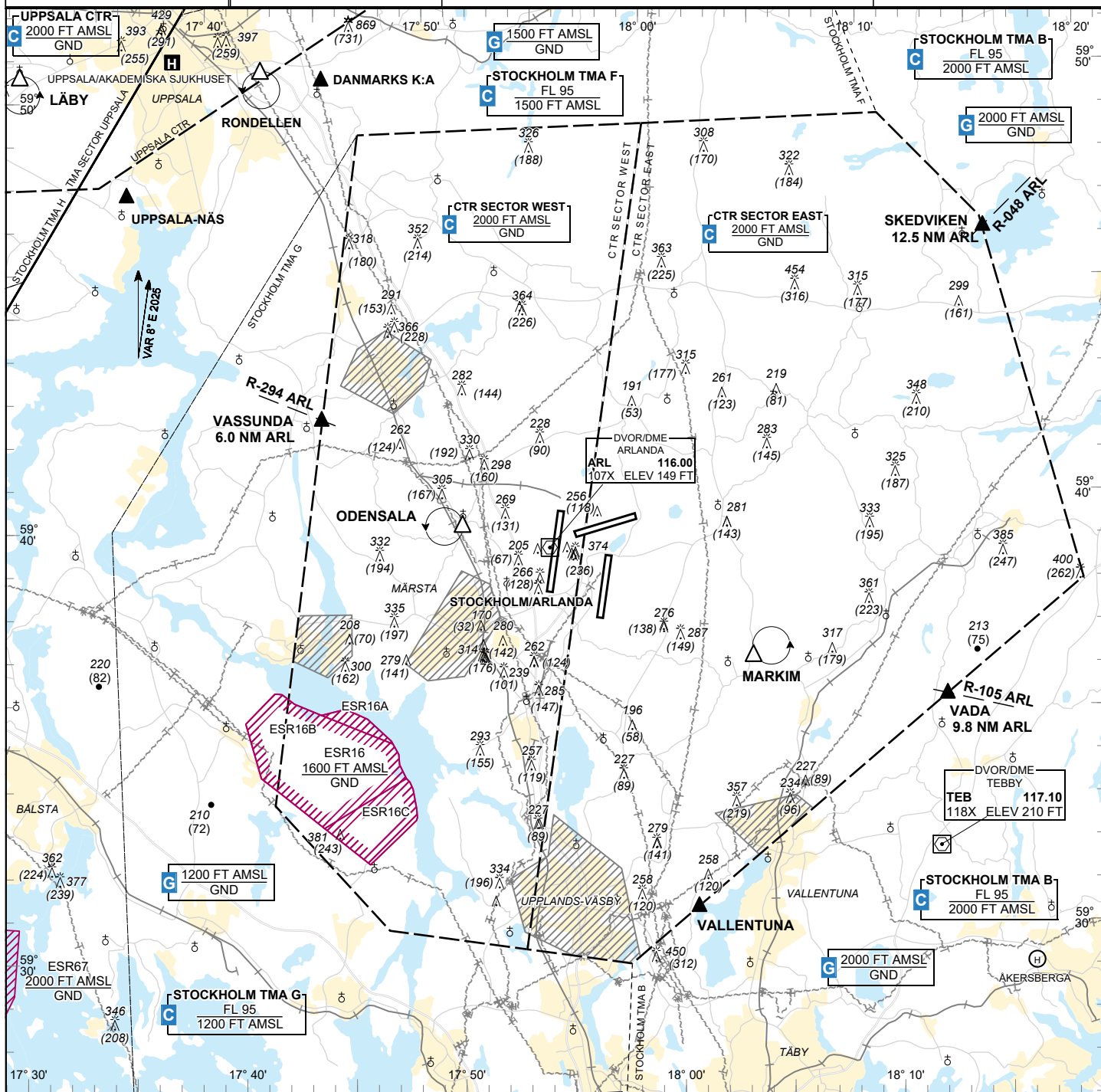
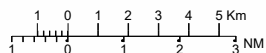
ELEV and ALT in ft
HGT in ft above AD ELEV

TA 5000 AMSL

ARLANDA TOWER	118.505 125.130 128.730 123.100
ARLANDA GROUND	121.705 121.930 121.980
ARLANDA CLR DELIVERY	121.830
ARLANDA ATIS ARR	119.005
ARLANDA ATIS DEP	121.630
STOCKHOLM APPROACH	123.755

STOCKHOLM/ARLANDA SWEDEN

1:250000



Communication failure

Aircraft with Communication failure is not allowed to enter Arlanda CTR.
In case of Communication failure proceed to aerodrome outside Arlanda CTR.

Remark

Note: Noise sensitive area should be avoided below 2000 ft AMSL

Legend

See GEN 2.3

RWY NR	THR ELEV	PAPI (MEHT)
01L	98.6 ft	Left/3.00° (61 ft)
19R	118.2 ft	Left/3.00° (56 ft)
01R	138.0 ft	Right/3.00° (57 ft)
19L	98.9 ft	Left/3.00° (57 ft)
08	108 ft	Left/3.00° (56 ft)
26	124.8 ft	Left/3.00° (60 ft)

Entry / exit point

SKEDVIKEN	594614N 0181526E
VADA	593525N 0181248E
VASSUNDA	594223N 0174438E
VALLENTUNA	593044N 0180059E

Holding

MARKIM:	Hold at Markim Church, northeast of point 593630N 0180359E
ODENSALA:	Hold at Odensala Church, west of point 593948N 0175054E

CHANGE: VAR, NDB WA withdrawn. Editorial