

AIP SVERIGE/SWEDEN

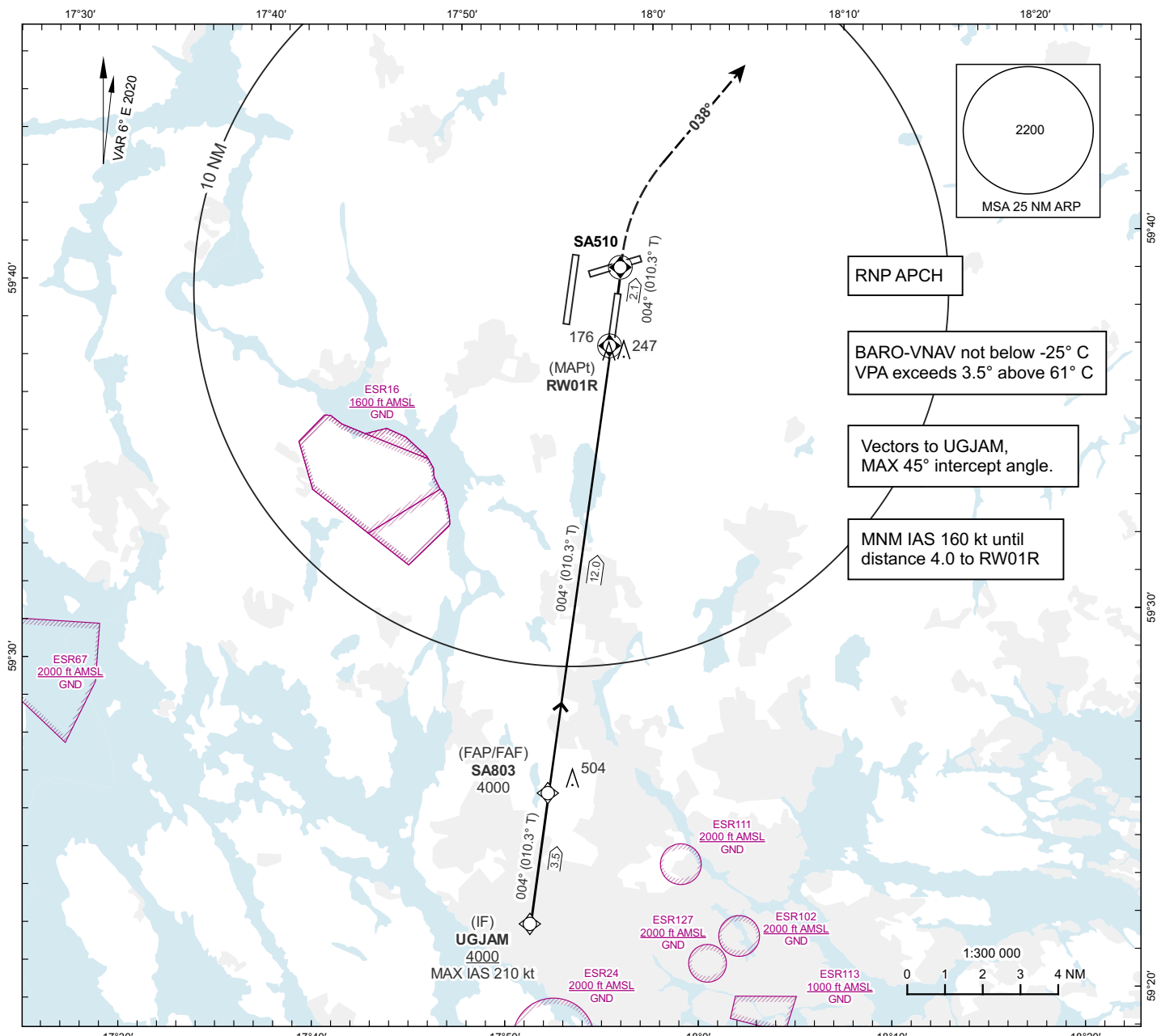
**INSTRUMENT
APPROACH
CHART - ICAO**

THR ELEV 138.0 ft AD ELEV 138 ft
OCH are related to THR.
BRG are MAG (True).
ALT, HGT and ELEV in ft.

ARLANDA TOWER 128.730/118.505/125.130
ARLANDA ATIS ARR 119.005
STOCKHOLM CONTROL 123.755

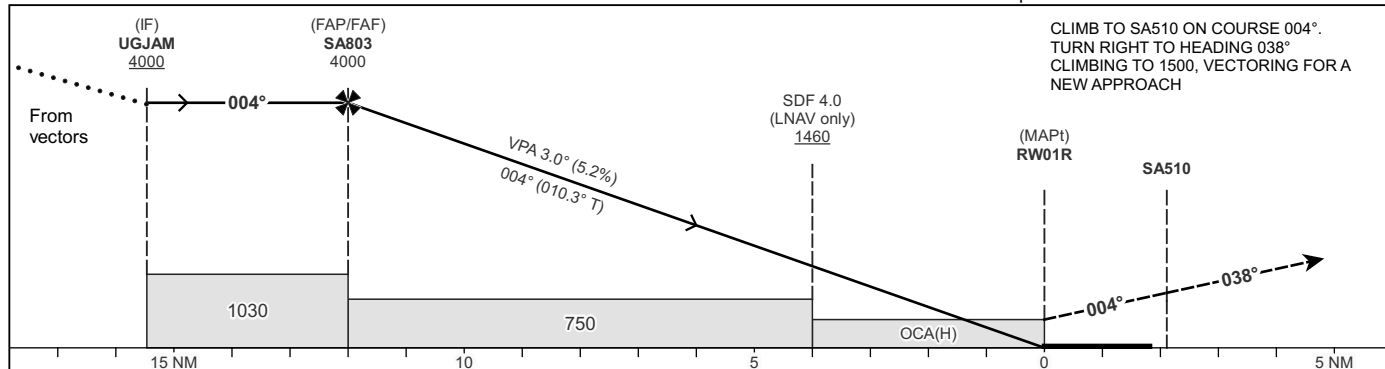
**STOCKHOLM/ARLANDA
RNP z RWY 01R**

EGNOS CH 66909 E 01B



TA 5000 ft AMSL RDH 50.0 ft

Special Com Failure Procedures see AD 2.22



OCA(H)						Final Approach	FAF-MAPt distance 12.0 NM										
CAT of ACFT	A	B	C	D	D _L	Dist to RW01R	NM	11	10	9	8	7	6	5	4	3	2
LPV	301(163)	309(171)	320(182)	330(192)	333(195)	ALT	ft	3691	3372	3054	2735	2417	2099	1780	1462	1143	825
LNAV/VNAV	387(249)	396(258)	406(268)	416(278)		GS	kt	80	100	120	140	160	180				
LNAV	510(380)					Rate of descent	ft/min	425	530	635	745	850	955				

CHANGE: New

RNP z RWY 01R

Path Term	Waypoint Identifier	Fly-over	Course °M(°T)	Dist (NM)	Turn Dir	Altitude	Speed Limits (kt)	VPA/RDH (°/ft)	Rec Navaid	Nav Spec
IF	UGJAM	-	-	-	-	+4000	-210	-	-	RNP APCH
TF	SA803	-	004°(010.3°)	3.5	-	@4000	-	-	-	RNP APCH
TF	RW01R	Y	004°(010.3°)	12.0	-	@188	-	-3.00/50	-	RNP APCH
CF	SA510	Y	004°(010.3°)	2.1	-	-	-	-	ARL	RNP APCH
VM	-	-	038°	-	R	@1500	-	-	-	RNP APCH

FAS Data Block

RNP z RWY 01R

Input data

Operation Type	0
SBAS Provider	1 (EGNOS)
Airport Identifier	ESSA
Runway	01
Runway Letter	1 (Right)
Approach Performance Designator	0
Route Indicator	Z
Reference Path Data Selector	0
Reference Path Identifier	E01B
LTP/FTP Latitude	593735.0300N
LTP/FTP Longitude	0175702.6700E
LTP/FTP Ellipsoidal Height (metres)	65.0
FPAP Latitude	593854.4900N
Delta FPAP Latitude (seconds)	79.4600
FPAP Longitude	0175731.4800E
Delta FPAP Longitude (seconds)	28.8100
Threshold Crossing Height	50.0
TCH Units Selector	0 (feet)
Glidepath Angle (degrees)	3.00
Course Width (metres)	105.00
Length Offset (metres)	0
HAL (metres)	40.0
VAL (metres)	35.0

Output data

Data Block	10 01 13 13 05 41 D0 00 02 31 30 05 6C C0 96 19 9C 20 B4 07 8A 16 C8 6C 02 14 E1 00 F4 01 2C 01 64 00 C8 AF D2 E6 D6 AC
Calculated CRC Value	D2E6D6AC
Supplied CRC Value	D2E6D6AC
Comparison Result	OK