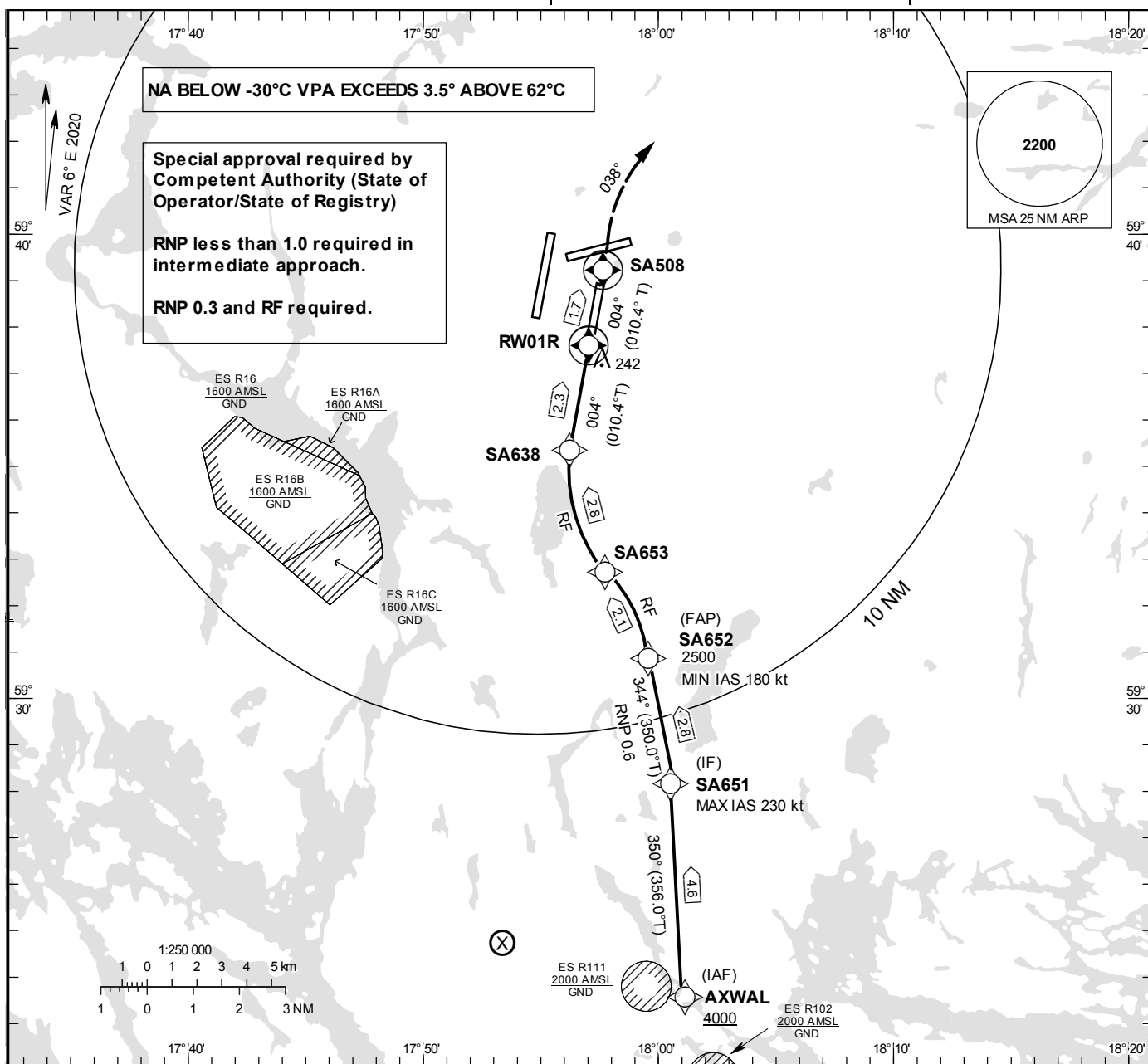


STOCKHOLM/Arlanda
RNP y RWY 01R (AR)

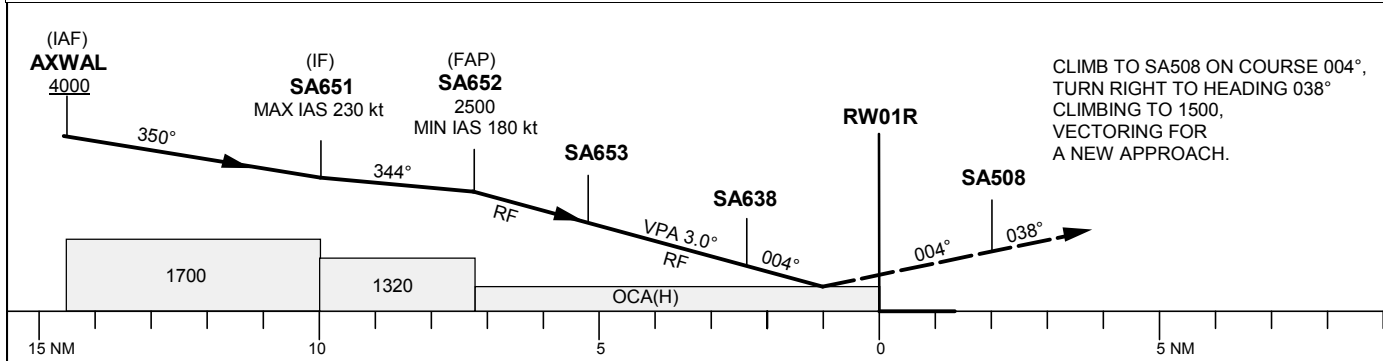
INSTRUMENT APPROACH CHART – ICAO

THR ELEV 138.0 ft, AD ELEV 138 ft
OCH are related to THR.
BRG are MAG (True).
ALT, HGT and ELEV in ft.

ARLANDA TOWER 128.730/
118.505/125.130
ARLANDA ATIS ARR 119.005
STOCKHOLM APPROACH 123.755



TA 5000 ft AMSL RDH 50.9 ft Special Com Failure Procedures see ESSA AD 2.22



OCA (H)												
Cat of ACFT	A	B	C	D	Dist to RW01R	7	6	5	4	3	2	1
RNP (0.3)		500 (362)				2418	2100	1781	1463	1144	826	507

CHANGE: Editorial

STOCKHOLM/Arlanda**Prescribed Coding/Description RNP y RWY 01R (AR)**

Path Desc	Waypoint Identifier	Fly-over	Course °M(°T)	Dist (NM)	Turn Dir	Altitude	Speed	VPA/RDH	Rec Nav	ARC Radius (NM)	ARC Center	Nav Spec
IF	AXWAL	-	-	-	-	+4000	-250	-	-	-	-	RNP 1.0
TF	SA651	-	350°(356.0°)	4.6	-	-	-230	-	-	-	-	RNP 1.0
TF	SA652	-	344°(350.0°)	2.8	-	@2500	+180	-	-	-	-	RNP 0.6
RF	SA653	-	-	2.1	L	-	-	-3.0	-	3.705	SA654	RNP 0.3
RF	SA638	-	-	2.8	R	-	-	-3.0	-	3.046	SA655	RNP 0.3
TF	RW01R	Y	004° (010.4°)	2.3	-	@189	-	-3.0/50.9	-	-	-	RNP 0.3
CF	SA508	Y	004° (010.4°)	1.7	-	-	-	-	ARL	-	-	RNP APCH
VM	-	-	038°	-	R	@1500	-	-	-	-	-	RNP APCH