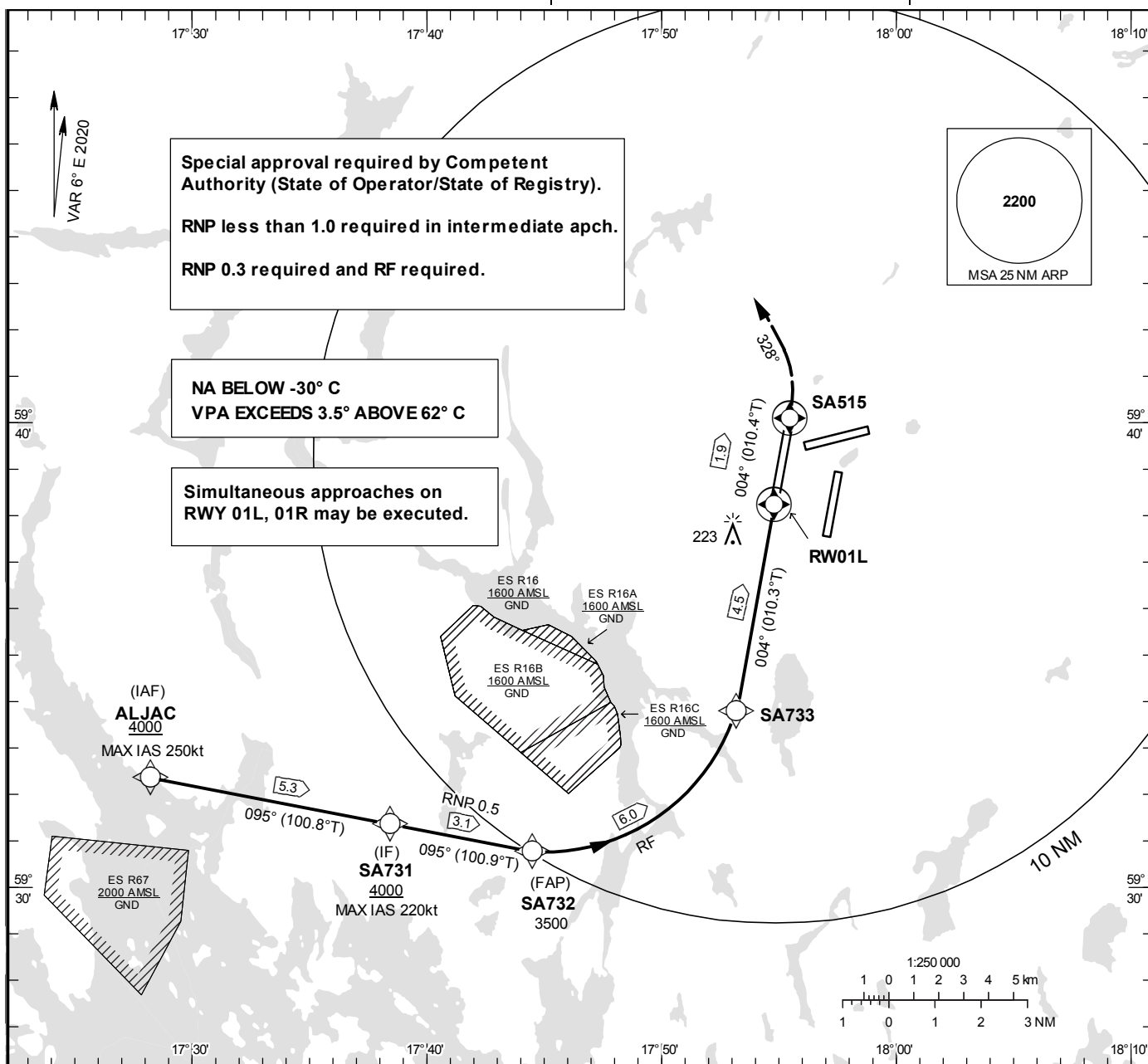


STOCKHOLM/Arlanda
RNP y RWY 01L (AR)

INSTRUMENT APPROACH CHART – ICAO

THR ELEV 98.6 ft, AD ELEV 138 ft
OCH are related to THR.
BRG are MAG (True).
ALT, HGT and ELEV in ft.

ARLANDA TOWER 128.730/
118.505/125.130
ARLANDA ATIS ARR 119.005
STOCKHOLM APPROACH 123.755

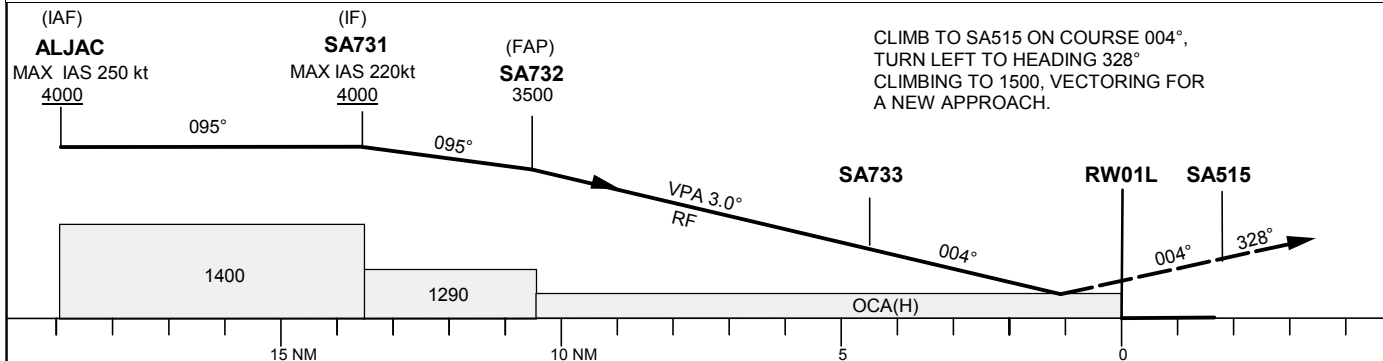


Special approval required by Competent Authority (State of Operator/State of Registry).
RNP less than 1.0 required in intermediate apch.
RNP 0.3 required and RF required.

NA BELOW -30° C
VPA EXCEEDS 3.5° ABOVE 62° C

Simultaneous approaches on RWY 01L, 01R may be executed.

TA 5000 ft AMSL RDH 56.1 ft Special Com Failure Procedures see ESSA AD 2.22



		OCA (H)												
Cat of ACFT	A	B	C	D	Dist to RWY 01L	10	9	8	7	6	5	4	3	2
RNP 0.3		510 (412)			ALT	3339	3021	2702	2384	2065	1747	1428	1110	792

CHANGE: Note added.

STOCKHOLM/Arlanda

Prescribed Coding/Description RNP y RWY 01L (AR)

Path Desc	Waypoint Identifier	Fly-over	Course °M(°T)	Dist (NM)	Turn Dir	Rest Alts (ft AMSL)	Speed Limits (kt)	VPA/RDH (°/ft)	Rec Nav	ARC Radius (NM)	ARC Center	Nav Spec
IF	ALJAC	-	-	-	-	+4000	-250	-	-	-	-	RNP 1.0
TF	SA731	-	095° (100.8°)	5.3	-	+4000	-220	-	-	-	-	RNP 1.0
TF	SA732	-	095° (100.9°)	3.1	-	@3500	-	-	-	-	-	RNP 0.5
RF	SA733	-	-	6.0	L	-	-	-3.00	-	3.766	SA734	RNP 0.3
TF	RW01L	Y	004° (010.3°)	4.5	-	@155	-	-3.00/56.1	-	-	-	RNP 0.3
CF	SA515	Y	004° (010.4°)	1.9	-	-	-	-	ARL	-	-	RNP APCH
VM	-	-	328°	-	L	@1500	-	-	-	-	-	RNP APCH