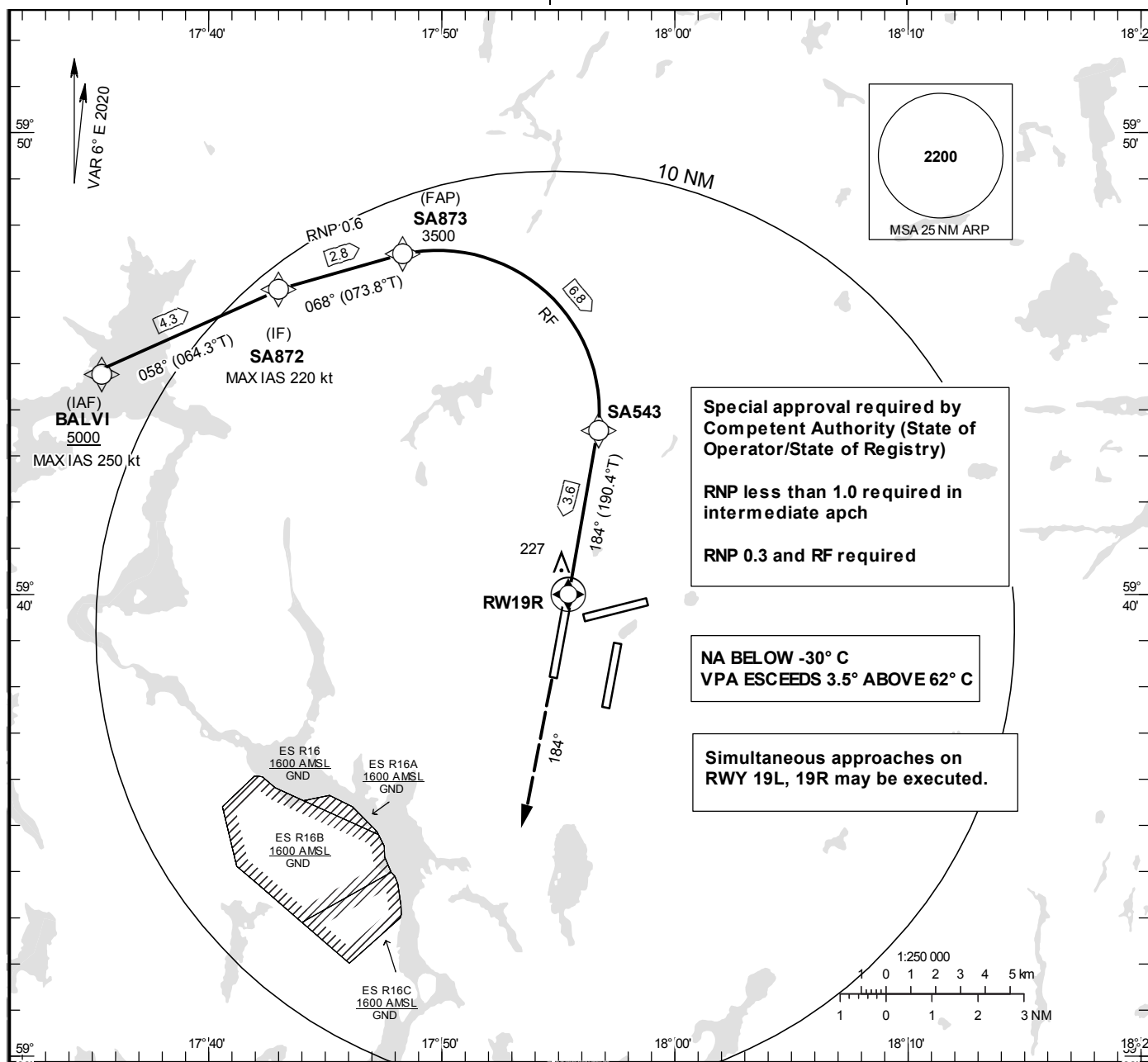


STOCKHOLM/Arlanda
RNP x RWY 19R (AR)

INSTRUMENT APPROACH CHART – ICAO

THR ELEV 118.2 ft, AD ELEV 138 ft
OCH are related to THR.
BRG are MAG (True).
ALT, HGT and ELEV in ft.

ARLANDA TOWER 128.730/
118.505/125.130
ARLANDA ATIS ARR 119.005
STOCKHOLM APPROACH 123.755

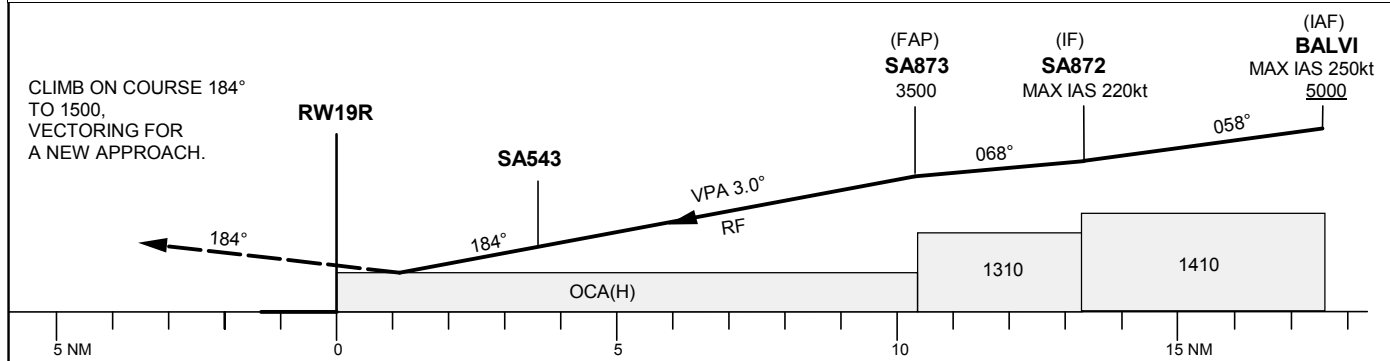


Special approval required by Competent Authority (State of Operator/State of Registry)
RNP less than 1.0 required in intermediate apch
RNP 0.3 and RF required

NA BELOW -30° C
VPA ESCCEEDS 3.5° ABOVE 62° C

Simultaneous approaches on RWY 19L, 19R may be executed.

TA 5000 ft AMSL RDH 50.9 ft Special Com Failure Procedures see ESSA AD 2.22



OCA (H)															
Cat of ACFT	A	B	C	D	Dist to RWY19R	1	2	3	4	5	6	7	8	9	10
RNP 0.3	480 (362)				ALT	488	806	1124	1443	1761	2080	2398	2717	3035	3353

CHANGE: Note added.

STOCKHOLM/Arlanda

Prescribed Coding/Description RNP x RWY 19R (AR)

Path Desc	Waypoint Identifier	Fly-over	Course °M(°T)	Dist (NM)	Turn Dir	Rest Alts (ft AMSL)	Speed Limits (kt)	VPA/ RDH (°/ft)	ARC Radius (NM)	ARC Center	Nav Spec
IF	BALVI	-	-	-	-	+5000	-250	-	-	-	RNP 1.0
TF	SA872	-	058° (064.3°)	4.3	-	-	-220	-	-	-	RNP 1.0
TF	SA873	-	068° (073.8°)	2.8	-	@3500	-	-	-	-	RNP 0.6
RF	SA543	-	-	6.8	R	-	-	-3.00	3.3665	SA876	RNP 0.3
TF	RW19R	Y	184° (190.4°)	3.6		@169	-	-3.00/50.9	-	-	RNP 0.3
CA	-	-	184° (190.4°)	-	-	+1500	-	-	-	-	RNP APCH
VM	-	-	184°	-	-	@1500	-	-	-	-	RNP APCH