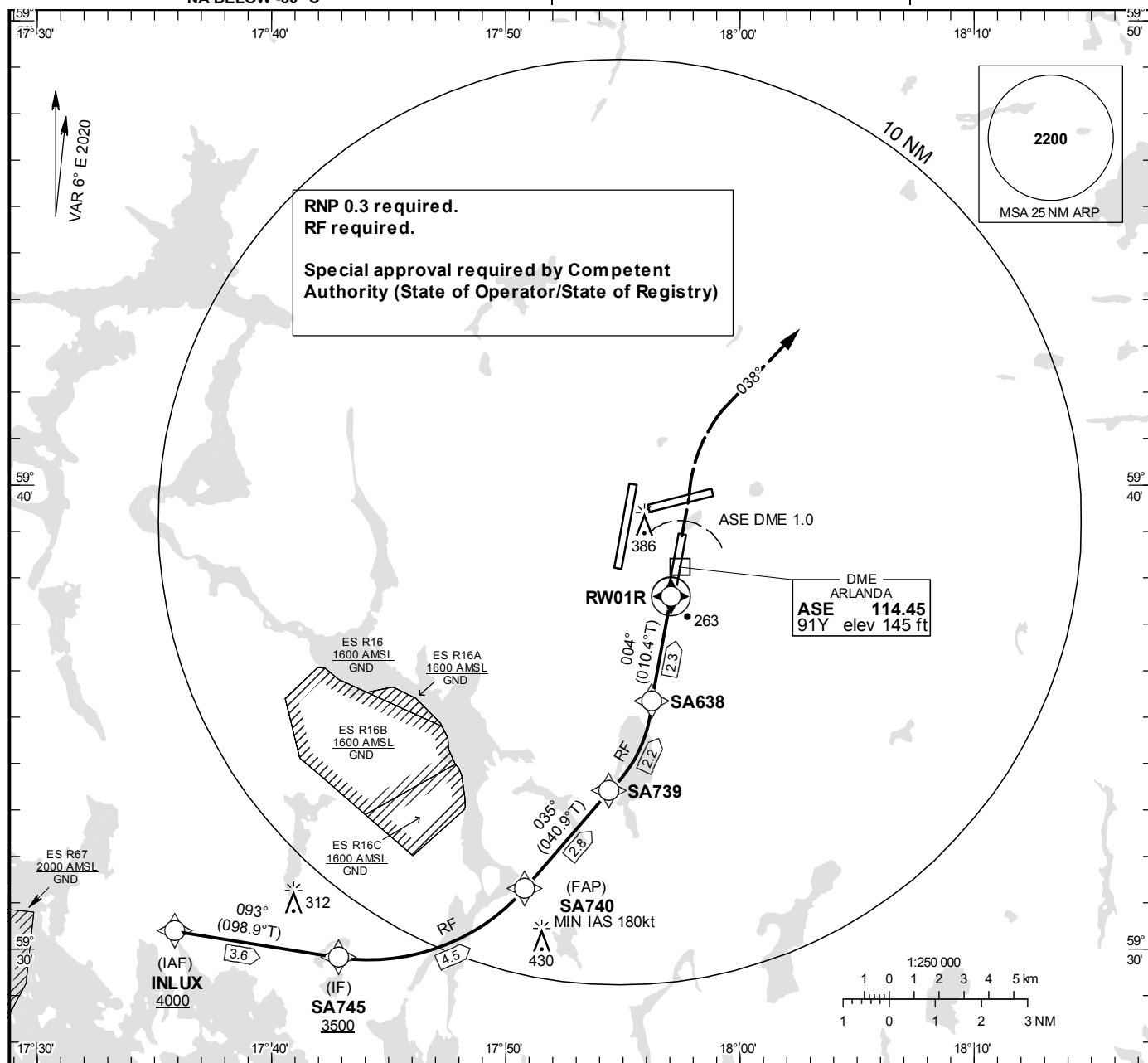


STOCKHOLM/Arlanda
RNP x RWY 01R (AR)

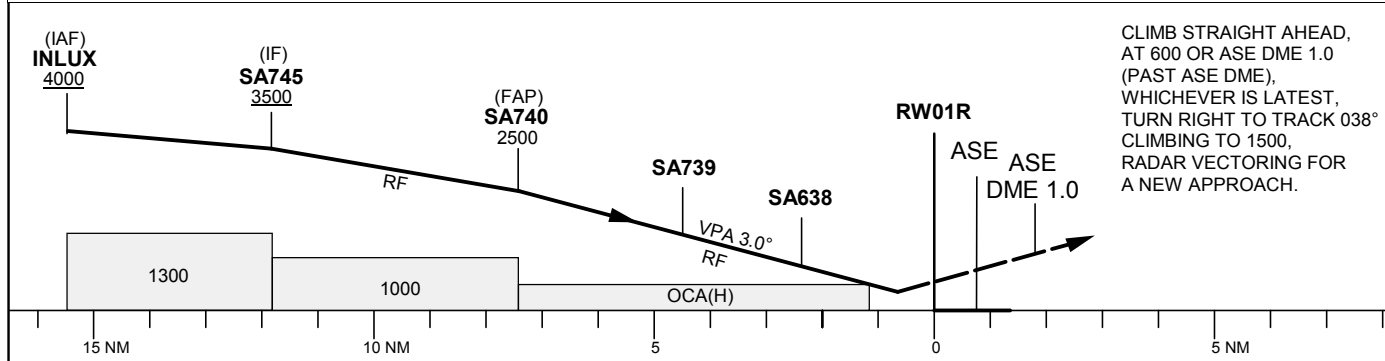
INSTRUMENT APPROACH CHART – ICAO

THR ELEV 138.0 ft, AD ELEV 138 ft
OCH are related to THR.
BRG are MAG (True).
ALT, HGT and ELEV in ft.
NA BELOW -30° C

ARLANDA TOWER 128.730/
118.505/125.130
ARLANDA ATIS ARR 119.005
STOCKHOLM APPROACH 123.755



TA 5000 ft AMSL RDH 50.9 ft Special COM Failure Procedures see ESSA AD 2.22



OCA (H)				
Cat of ACFT	A	B	C	D
RNP (0.3)	489 (351)	497 (359)	509 (371)	520 (382)

CHANGE: Editorial

STOCKHOLM/Arlanda**Prescribed Coding/Description RNP x RWY 01R (AR)**

Path Desc	Waypoint Identifier	Fly-over	Course °M(°T)	Dist (NM)	Turn Dir	Altitude	Speed	VPA/RDH	ARC Radius (NM)	ARC Center	Nav Spec
IF	INLUX	-	-	-	-	+4000	-	-	-	-	RNP 1.0
TF	SA745	-	093°(098.9°)	3.6	-	+3500	-	-	-	-	RNP 1.0
RF	SA740	-	-	4.5	L	2500	+180	-	4.4277	SA744	RNP 1.0
TF	SA739	-	035° (040.9°)	2.8	-	-	-	-3.0	-	-	RNP 0.3
RF	SA638	-	-	2.2	L	-	-	-3.0	4.0767	SA737	RNP 0.3
TF	RW01R	Y	004° (010.4°)	2.3	-	188	-	-3.0	-	-	RNP 0.3