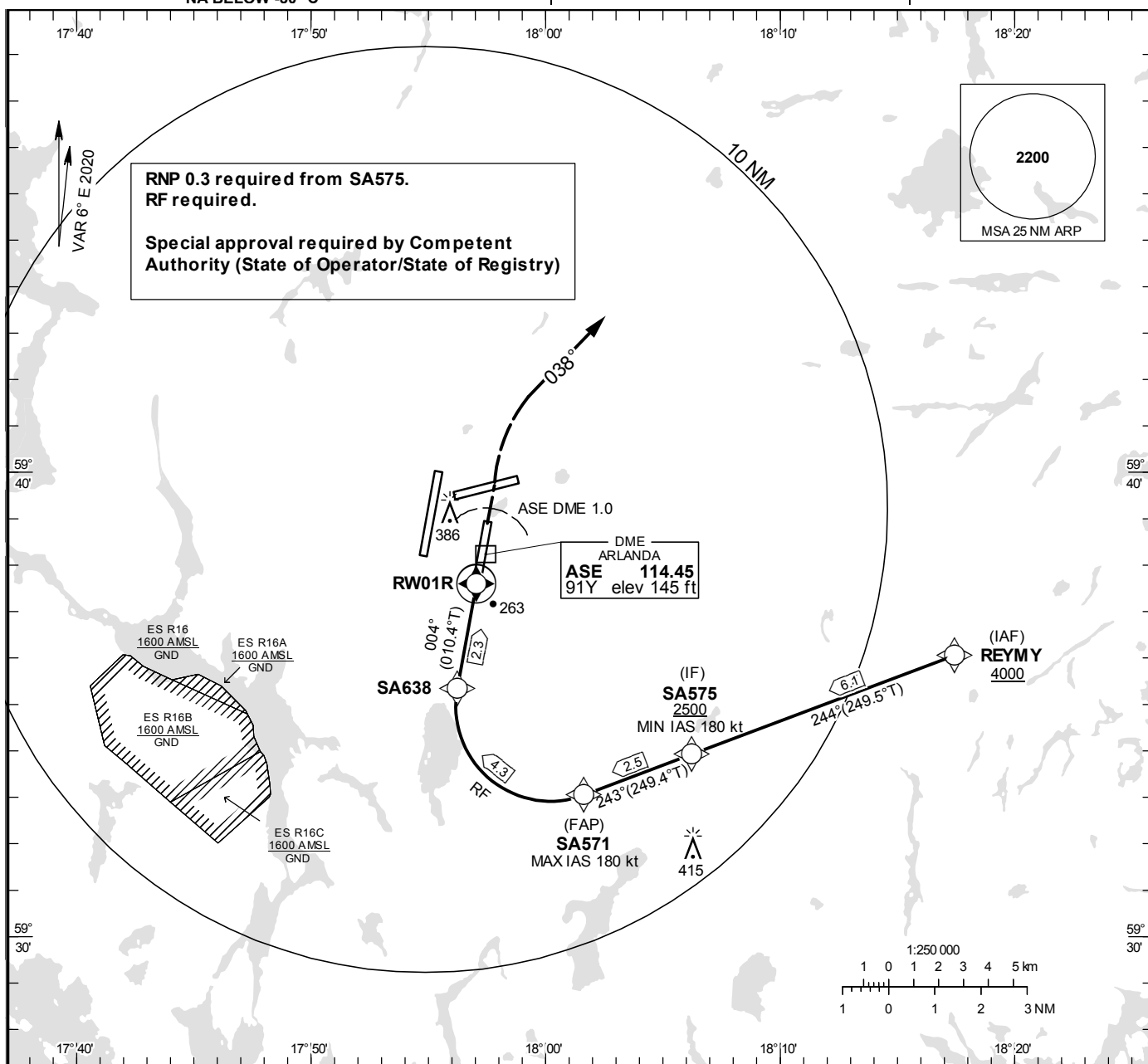


STOCKHOLM/Arlanda
RNP w RWY 01R (AR)

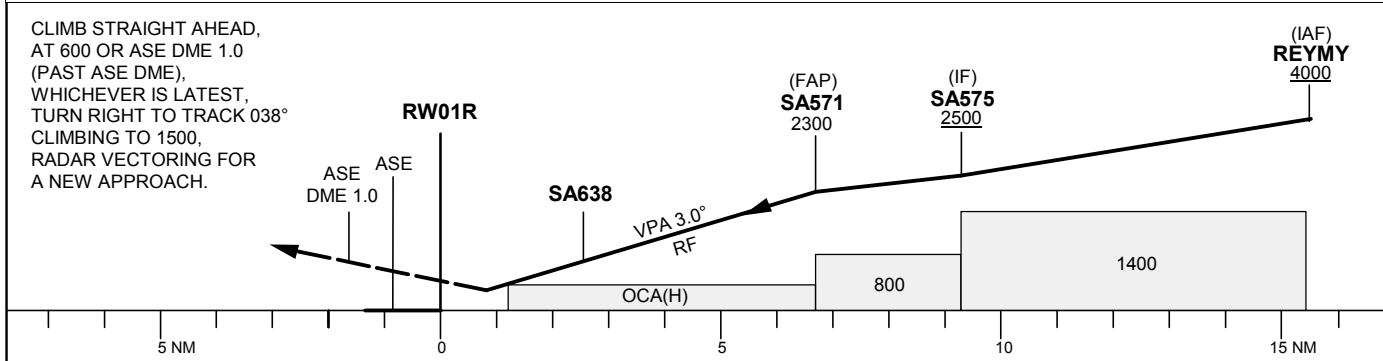
INSTRUMENT APPROACH CHART – ICAO

THR ELEV 138.0 ft, AD ELEV 138 ft
OCH are related to THR.
BRG are MAG (True).
ALT, HGT and ELEV in ft.
NA BELOW -30° C

ARLANDA TOWER 128.730/
118.505/125.130
ARLANDA ATIS ARR 119.005
STOCKHOLM APPROACH 123.755



TA 5000 ft AMSL RDH 50.9 ft Special Com Failure Procedures see ESSA AD 2.22



OCA (H)				
Cat of ACFT	A	B	C	D
RNP (0.3)	489 (351)	497 (359)	509 (371)	520 (382)

CHANGE: Editorial

STOCKHOLM/Arlanda

Prescribed Coding/Description RNP w RWY 01R (AR)

Path Desc	Waypoint Identifier	Fly-over	Course °M(°T)	Dist (NM)	Turn Dir	Altitude	Speed	VPA/RDH	ARC Radius (NM)	ARC Center	Nav Spec
IF	REYMY	-	-	-	-	+4000	-	-	-	-	RNP 1.0
TF	SA575	-	244° (249.5°)	6.1	-	+2500	+180	-	-	-	RNP 1.0
TF	SA571	-	243° (249.4°)	2.5	-	2300	-180	-	-	-	RNP 0.3
RF	SA638	-	-	4.3	R	-	-	-3.0	2.0529	SA569	RNP 0.3
TF	RW01R	Y	004° (010.4°)	2.3	-	188	-	-3.0	-	-	RNP 0.3