

AIP SVERIGE/SWEDEN

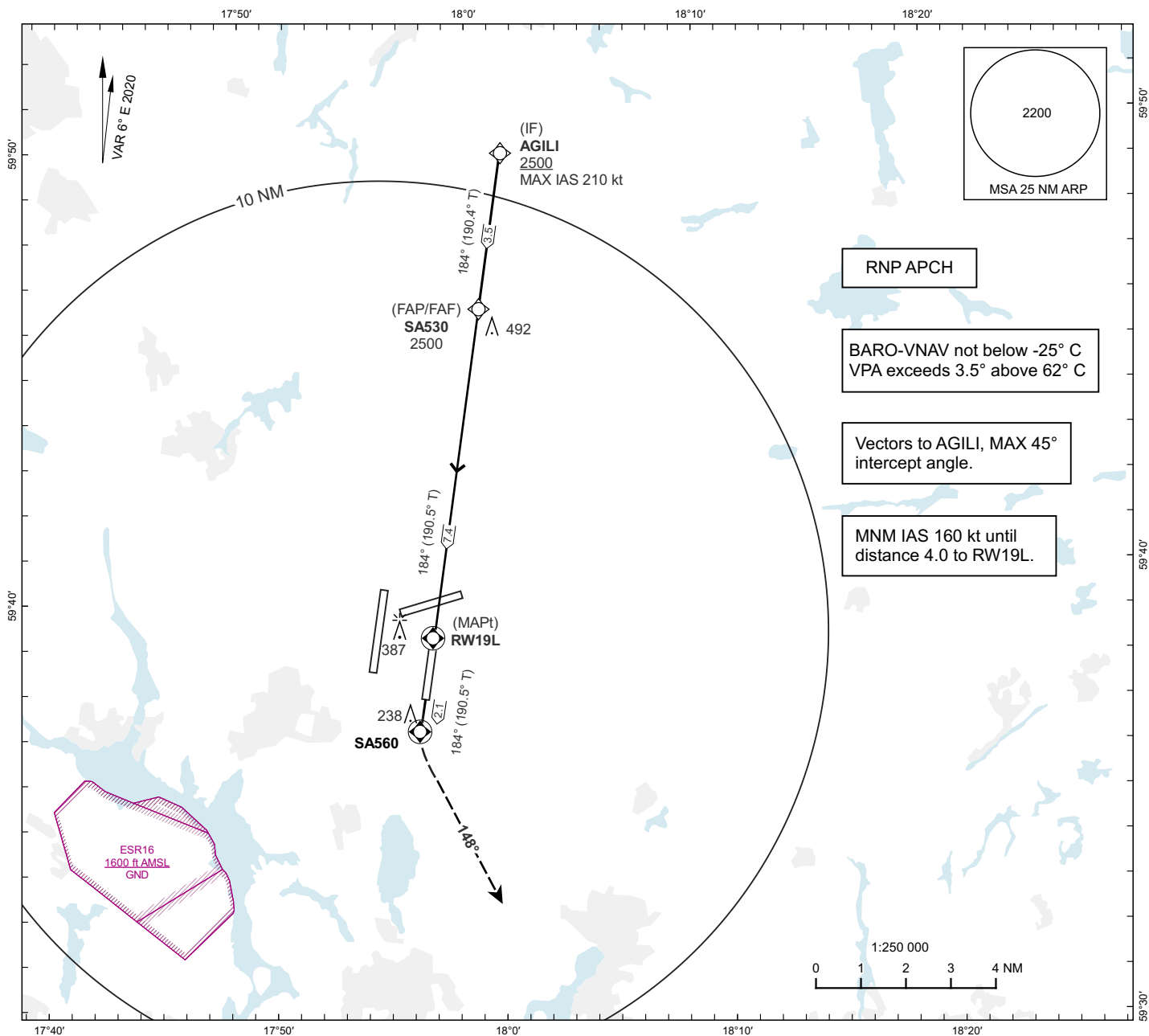
**INSTRUMENT
APPROACH
CHART - ICAO**

THR ELEV 98.9 ft AD ELEV 138 ft
OCH are related to THR.
BRG are MAG (True).
ALT, HGT and ELEV in ft.

ARLANDA TOWER	128.730/118.505/125.130
ARLANDA ATIS ARR	119.005
STOCKHOLM CONTROL	123.755

**STOCKHOLM/ARLANDA
RNP RWY 19L**

EGNOS CH 87777 E 19B



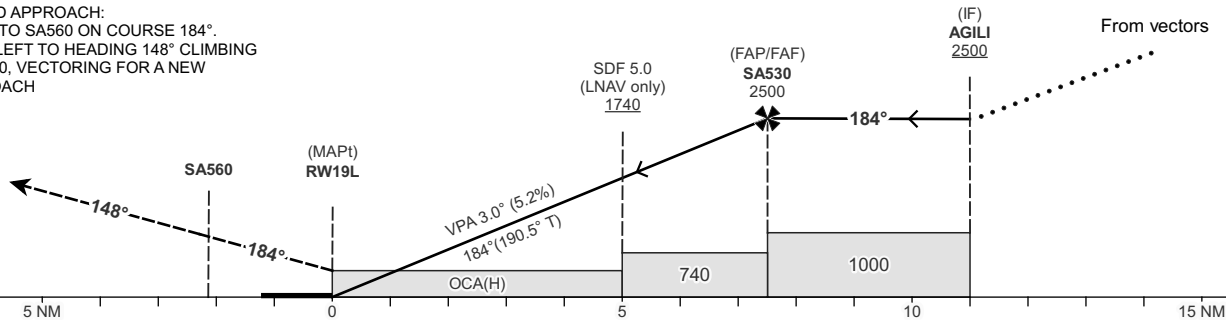
TA 5000 ft AMSL

RDH 50.0 ft

Special Com Failure Procedures see AD 2.22

CHANGE: LPV added, procedure naming, OCA(H), MOCA, OBST.

MISSED APPROACH:
CLIMB TO SA560 ON COURSE 184°.
TURN LEFT TO HEADING 148° CLIMBING
TO 1500, VECTORING FOR A NEW
APPROACH



CAT of ACFT	OCA(H)					Final Approach		FAF-MAPt distance 7.4 NM						
	A	B	C	D	D _L	Dist to RW19L	NM	2	3	4	5	6	7	
LPV	297(199)	307(209)	317(219)	327(229)	327(229)	ALT	ft	786	1104	1423	1741	2060	2378	
LNAV/VNAV	466(368)	471(373)	476(378)	482(384)		GS	kt	80	100	120	140	160	180	
LNAV	530(440)					Rate of descent	ft/min	425	530	635	745	850	955	

RNP RWY 19L

Path Term	Waypoint Identifier	Fly-over	Course °M(°T)	Dist (NM)	Turn Dir	Altitude	Speed Limits (kt)	VPA/RDH (°/ft)	Rec Navaid	Nav Spec
IF	AGILI	-	-	-	-	+2500	-210	-	-	RNP APCH
TF	SA530	-	184°(190.4°)	3.5	-	@2500	-	-	-	RNP APCH
TF	RW19L	Y	184°(190.5°)	7.4	-	@149	-	-3.00/50	-	RNP APCH
CF	SA560	Y	184°(190.5°)	2.1	-	-	-	-	ARL	RNP APCH
VM	-	-	148°	-	L	@1500	-	-	-	RNP APCH

FAS Data Block

RNP RWY 19L

Input data

Operation Type	0
SBAS Provider	1 (EGNOS)
Airport Identifier	ESSA
Runway	19
Runway Letter	3 (Left)
Approach Performance Designator	0
Route Indicator	
Reference Path Data Selector	0
Reference Path Identifier	E19B
LTP/FTP Latitude	593854.4900N
LTP/FTP Longitude	0175731.4800E
LTP/FTP Ellipsoidal Height (metres)	53.1
FPAP Latitude	593735.0300N
Delta FPAP Latitude (seconds)	-79.4600
FPAP Longitude	0175702.6700E
Delta FPAP Longitude (seconds)	-28.8100
Threshold Crossing Height	50.0
TCH Units Selector	0 (feet)
Glidepath Angle (degrees)	3.00
Course Width (metres)	105.00
Length Offset (metres)	0
HAL (metres)	40.0
VAL (metres)	35.0

Output data

Data Block	10 01 13 13 05 D3 00 00 02 39 31 05 34 2D 99 19 B0 01 B5 07 13 16 38 93 FD EC 1E FF F4 01 2C 01 64 00 C8 AF 71 E2 DC 79
Calculated CRC Value	71E2DC79
Supplied CRC Value	71E2DC79
Comparison Result	OK