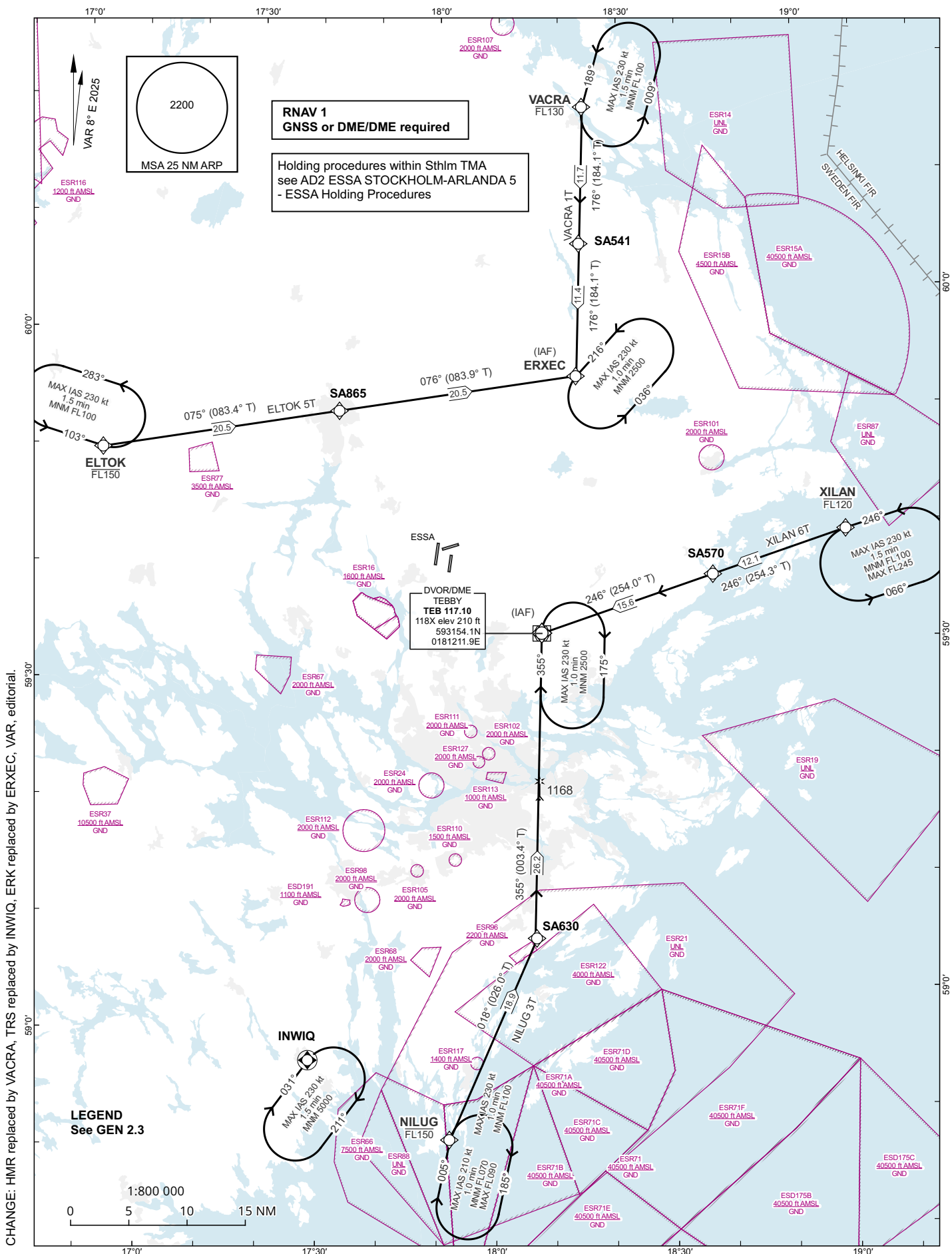


AIP SVERIGE/SWEDEN
**STANDARD INSTRUMENT
ARRIVAL CHART (STAR) -
ICAO**

HGT and ALT in ft	ARLANDA TOWER	118.505
BRG are MAG (True)	ARLANDA ATIS ARR	119.005
TA 5000 ft AMSL	STOCKHOLM APPROACH	123.755

**STOCKHOLM/ARLANDA
RNAV RWY 26**
ELTOK 5T, NILUG 3T, VACRA 1T, XILAN 6T



CHANGE: HMR replaced by VACRA, TRS replaced by INWIQ, TRS replaced by ERXEC, VAR, editorial.

Prescribed Coding of RNAV STAR for RWY 26

REMARK:

Aircraft to STOCKHOLM/Arlanda shall not be operated at an airspeed of more than 250 kt IAS below FL100 unless otherwise instructed.

Clearance limit is normally the IAF.

From IAF aircraft will be vectored to final approach.

In case of radio communication failure, see AD 2.22 para 3.

All RNAV STARs are based on GNSS or DME/DME for position update.

ELTOK 5T (ELTOK FIVE TANGO ARRIVAL)

Path Term	Waypoint Identifier	Fly-over	Course °M(°T)	Dist (NM)	Turn Dir	Altitude (ft AMSL)	Speed Limits (kt)	VPA/RDH (°/ft)	Rec Navaid	Nav Spec
IF	ELTOK	-	-	-	-	-FL150	-	-	-	RNAV 1
TF	SA865	-	075° (083.4°)	20.5	-	-	-	-	-	RNAV 1
TF	ERXEC	-	076° (083.9°)	20.5	-	-	-	-	-	RNAV 1

STAR instruction: ELTOK (FL150 or below) – SA865 – ERXEC

NILUG 3T (NILUG THREE TANGO ARRIVAL)

Path Term	Waypoint Identifier	Fly-over	Course °M(°T)	Dist (NM)	Turn Dir	Altitude (ft AMSL)	Speed Limits (kt)	VPA/RDH (°/ft)	Rec Navaid	Nav Spec
IF	NILUG	-	-	-	-	-FL150	-	-	-	RNAV 1
TF	SA630	-	018° (026.0°)	18.9	-	-	-	-	-	RNAV 1
TF	TEB	-	355° (003.4°)	26.2	-	-	-	-	-	RNAV 1

STAR instruction: NILUG (FL150 or below) – SA630 – TEB

VACRA 1T (VACRA ONE TANGO ARRIVAL)

Path Term	Waypoint Identifier	Fly-over	Course °M(°T)	Dist (NM)	Turn Dir	Altitude (ft AMSL)	Speed Limits (kt)	VPA/RDH (°/ft)	Rec Navaid	Nav Spec
IF	VACRA	-	-	-	-	-FL130	-	-	-	RNAV 1
TF	SA541	-	176° (184.1 °)	11.7	-	-	-	-	-	RNAV 1
TF	ERXEC	-	176° (184.1 °)	11.4	-	-	-	-	-	RNAV 1

STAR instruction: VACRA (FL130 or below) – SA541 – ERXEC

XILAN 6T (XILAN SIX TANGO ARRIVAL)

Path Term	Waypoint Identifier	Fly-over	Course °M(°T)	Dist (NM)	Turn Dir	Altitude (ft AMSL)	Speed Limits (kt)	VPA/RDH (°/ft)	Rec Navaid	Nav Spec
IF	XILAN	-	-	-	-	-FL120	-	-	-	RNAV 1
TF	SA570	-	246° (254.3°)	12.1	-	-	-	-	-	RNAV 1
TF	TEB	-	246° (254.0°)	15.6	-	-	-	-	-	RNAV 1

STAR instruction: XILAN (FL120 or below) – SA570 – TEB