

AIP SVERIGE/SWEDEN

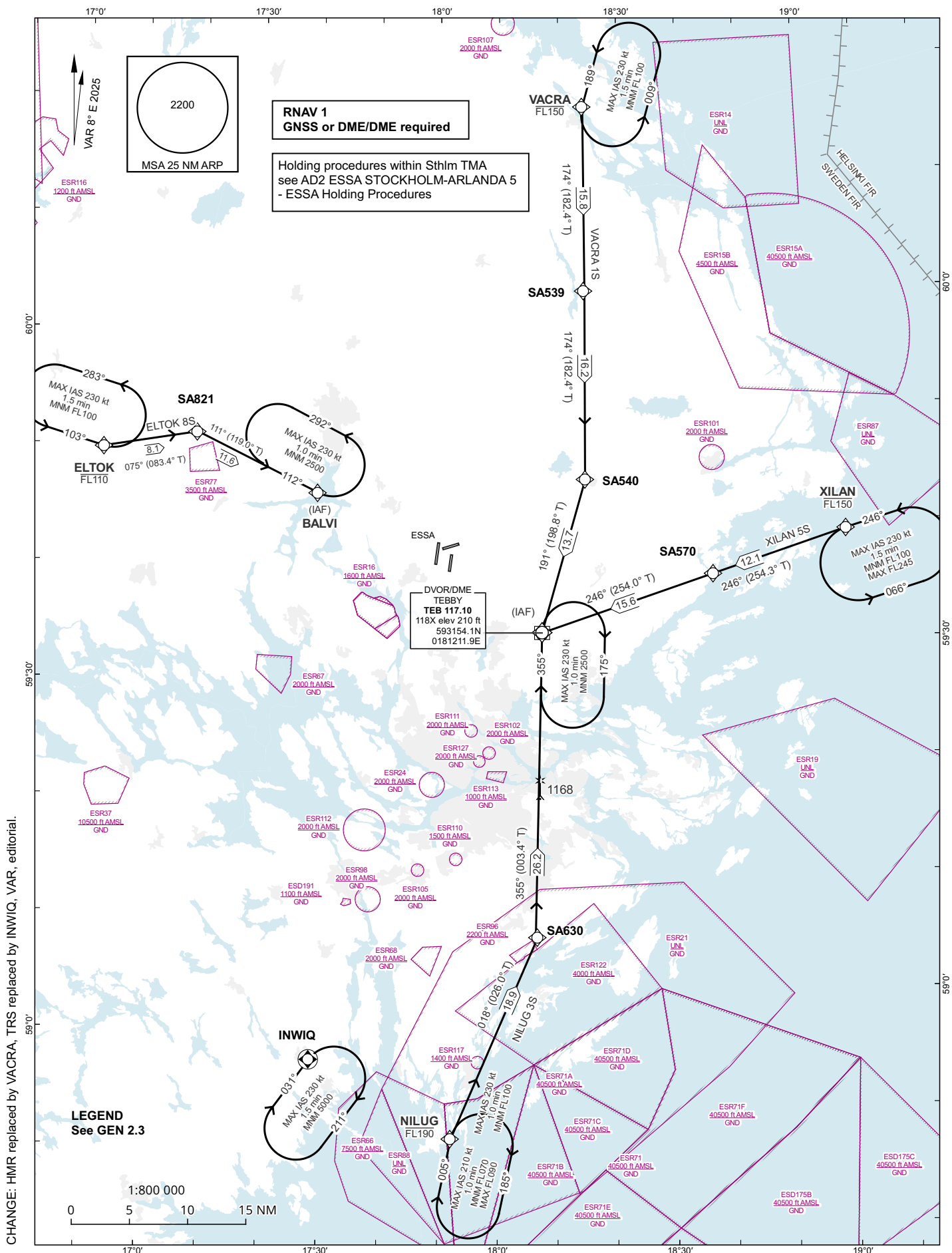
**STANDARD INSTRUMENT
ARRIVAL CHART (STAR) -
ICAO**

HGT and ALT in ft
BRG are MAG (True)
TA 5000 ft AMSL

ARLANDA TOWER	118.505
ARLANDA ATIS ARR	119.005
STOCKHOLM APPROACH	123.755

**STOCKHOLM/ARLANDA
RNAV RWY 08**

ELTOK 8S, NILUG 3S, VACRA 1S, XILAN 5S



Prescribed Coding of RNAV STAR for RWY 08

REMARK:

Aircraft to STOCKHOLM/Arlanda shall not be operated at an airspeed of more than 250 kt IAS below FL100 unless otherwise instructed.

Clearance limit is normally the IAF.

From IAF aircraft will be vectored to final approach.

In case of radio communication failure, see AD 2.22 para 3.

All RNAV STARs are based on GNSS or DME/DME for position update.

ELTOK 8S (ELTOK EIGHT SIERRA ARRIVAL)

Path Term	Waypoint Identifier	Fly-over	Course °M(°T)	Dist (NM)	Turn Dir	Altitude (ft AMSL)	Speed Limits (kt)	VPA/RDH (°/ft)	Rec Navaid	Nav Spec
IF	ELTOK	-	-	-	-	-FL110	-	-	-	RNAV 1
TF	SA821	-	075° (083.4°)	8.1	-	-	-	-	-	RNAV 1
TF	BALVI	-	111° (119.0°)	11.6	-	-	-	-	-	RNAV 1

STAR instruction: ELTOK (FL110 or below) – SA821 – BALVI

NILUG 3S (NILUG THREE SIERRA ARRIVAL)

Path Term	Waypoint Identifier	Fly-over	Course °M(°T)	Dist (NM)	Turn Dir	Altitude (ft AMSL)	Speed Limits (kt)	VPA/RDH (°/ft)	Rec Navaid	Nav Spec
IF	NILUG	-	-	-	-	-FL190	-	-	-	RNAV 1
TF	SA630	-	018° (026.0°)	18.9	-	-	-	-	-	RNAV 1
TF	TEB	-	355° (003.4°)	26.2	-	-	-	-	-	RNAV 1

STAR instruction: NILUG (FL190 or below) – SA630 – TEB

VACRA 1S (VACRA ONE SIERRA ARRIVAL)

Path Term	Waypoint Identifier	Fly-over	Course °M(°T)	Dist (NM)	Turn Dir	Altitude (ft AMSL)	Speed Limits (kt)	VPA/RDH (°/ft)	Rec Navaid	Nav Spec
IF	VACRA	-	-	-	-	-FL150	-	-	-	RNAV 1
TF	SA539	-	174° (182.4°)	15.8	-	-	-	-	-	RNAV 1
TF	SA540	-	174° (182.4°)	16.2	-	-	-	-	-	RNAV 1
TF	TEB	-	191° (198.8°)	13.7	-	-	-	-	-	RNAV 1

STAR instruction: VACRA (FL150 or below) – SA539 – SA540 – TEB

XILAN 5S (XILAN FIVE SIERRA ARRIVAL)

Path Term	Waypoint Identifier	Fly-over	Course °M(°T)	Dist (NM)	Turn Dir	Altitude (ft AMSL)	Speed Limits (kt)	VPA/RDH (°/ft)	Rec Navaid	Nav Spec
IF	XILAN	-	-	-	-	-FL150	-	-	-	RNAV 1
TF	SA570	-	246° (254.3°)	12.1	-	-	-	-	-	RNAV 1
TF	TEB	-	246° (254.0°)	15.6	-	-	-	-	-	RNAV 1

STAR instruction: XILAN (FL150 or below) – SA570 – TEB