

AIP SVERIGE/SWEDEN

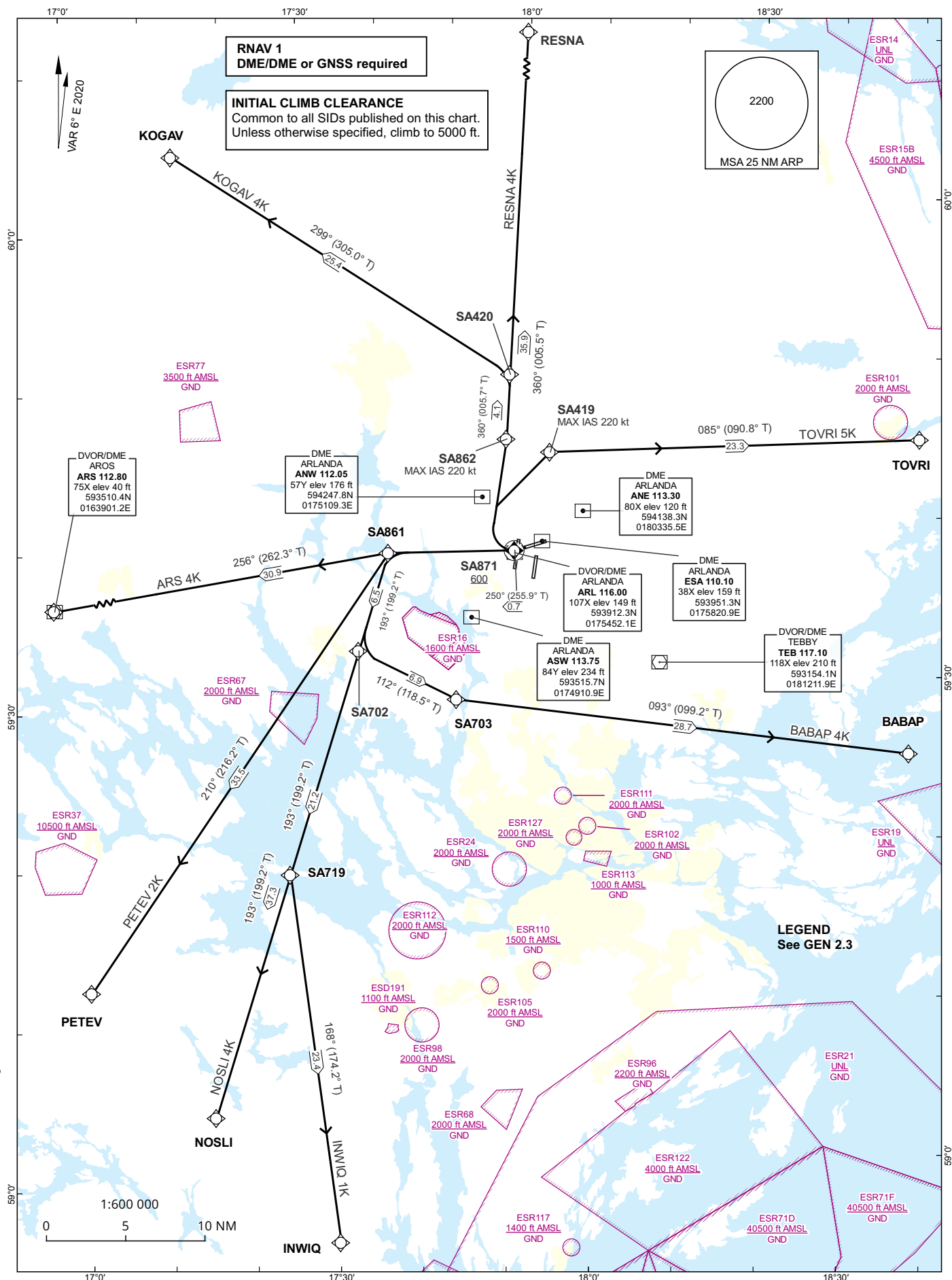
**STANDARD INSTRUMENT  
DEPARTURE CHART (SID) -  
ICAO**

HGT and ALT in ft  
BRG are MAG (True)  
TA 5000 ft AMSL

ARLANDA TOWER	128.730
ARLANDA ATIS DEP	121.630
STOCKHOLM APPROACH	123.755

**STOCKHOLM/ARLANDA  
RNAV RWY 26**

ARS 4K, BABAP 4K, INWIQ 1K, KOGAV 4K,  
NOSLI 4K, PETEV 2K, RESNA 4K, TOVRI 5K



CHANGE: Stockholm Control changed to STOCKHOLM DEPARTURE. Editorial.

**Prescribed Coding of RNAV SID for RWY 26**

**RNAV SID ARS 4K (AROS FOUR KILO DEPARTURE)**

Path Term	Waypoint Identifier	Fly-over	Course °M(°T)	Dist (NM)	Turn Dir	Altitude (ft AMSL)	Speed Limits (kt)	VPA/RDH (°/ft)	Rec Navaid	Nav Spec
CF	SA871	Y	250°(255.9°)	0.7	-	-	-	-	ARL	RNAV 1
CA	-	-	250°(255.9°)	-	-	+600	-	-	-	RNAV 1
DF	SA861	-	-	-	-	-	-	-	-	RNAV 1
TF	ARS	-	256°(262.3°)	30.9	-	-	-	-	-	RNAV 1

SID instruction: Climb to SA871 on course 250°. At or above 600 ft turn right direct to SA861 – ARS **124.105 MHz**

ACFT unable to follow RNAV SID: Report “unable RNAV SID due RNAV type” to Clearance Delivery and “unable RNAV SID” to STOCKHOLM DEPARTURE at first contact.  
Climb on track 250° to 1.8 NM ESA (MIN 600 ft before turn). Turn right to track 265°. Expect vectoring to ARS.

**RNAV SID BABAP 4K (BABAP FOUR KILO DEPARTURE)**

Path Term	Waypoint Identifier	Fly-over	Course °M(°T)	Dist (NM)	Turn Dir	Altitude (ft AMSL)	Speed Limits (kt)	VPA/RDH (°/ft)	Rec Navaid	Nav Spec
CF	SA871	Y	250°(255.9°)	0.7	-	-	-	-	ARL	RNAV 1
CA	-	-	250°(255.9°)	-	-	+600	-	-	-	RNAV 1
DF	SA861	-	-	-	-	-	-	-	-	RNAV 1
TF	SA702	-	193°(199.2°)	6.5	L	-	-	-	-	RNAV 1
TF	SA703	-	112°(118.5°)	6.9	L	-	-	-	-	RNAV 1
TF	BABAP	-	093°(099.2°)	28.7	-	-	-	-	-	RNAV 1

SID instruction: Climb to SA871 on course 250°. At or above 600 ft turn right direct to SA861 – SA702 – SA703 – BABAP **124.105 MHz**

ACFT unable to follow RNAV SID: Report “unable RNAV SID due RNAV type” to Clearance Delivery and “unable RNAV SID” to STOCKHOLM DEPARTURE at first contact.  
Climb on track 250° to 1.8 NM ESA (MIN 600 ft before turn). Turn right to track 265°. Expect vectoring to BABAP.

**RNAV SID INWIQ 1K (INWIQ ONE KILO DEPARTURE)**

Path Term	Waypoint Identifier	Fly-over	Course °M(°T)	Dist (NM)	Turn Dir	Altitude (ft AMSL)	Speed Limits (kt)	VPA/RDH (°/ft)	Rec Navaid	Nav Spec
CF	SA871	Y	250°(255.9°)	0.7	-	-	-	-	ARL	RNAV 1
CA	-	-	250°(255.9°)	-	-	+600	-	-	-	RNAV 1
DF	SA861	-	-	-	-	-	-	-	-	RNAV 1
TF	SA719	-	193°(199.2°)	21.2	L	-	-	-	-	RNAV 1
TF	INWIQ	-	168°(174.2°)	23.4	-	-	-	-	-	RNAV 1

SID instruction: Climb to SA871 on course 250°. At or above 600 ft turn right direct to SA861 – SA719 – INWIQ **124.105 MHz**

ACFT unable to follow RNAV SID: Report “unable RNAV SID due RNAV type” to Clearance Delivery and “unable RNAV SID” to STOCKHOLM DEPARTURE at first contact.  
Climb on track 250° to 1.8 NM ESA (MIN 600 ft before turn). Turn right to track 265°. Expect vectoring to INWIQ.

## STOCKHOLM/ARLANDA

## RNAV SID KOGAV 4K (KOGAV FOUR KILO DEPARTURE)

Path Term	Waypoint Identifier	Fly-over	Course °M(°T)	Dist (NM)	Turn Dir	Altitude (ft AMSL)	Speed Limits (kt)	VPA/RDH (°/ft)	Rec Navaid	Nav Spec
CF	SA871	Y	250°(255.9°)	0.7	-	-	-	-	ARL	RNAV 1
CA	-	-	250°(255.9°)	-	-	+600	-	-	-	RNAV 1
DF	SA862	-	-	-	R	-	-220	-	-	RNAV 1
TF	SA420	-	360°(005.7°)	4.1	-	-	-	-	-	RNAV 1
TF	KOGAV	-	299°(305.0°)	25.4	-	-	-	-	-	RNAV 1

SID instruction: Climb to SA871 on course 250°. At or above 600 ft turn right direct to SA862 (MAX IAS 220 kt until SA862) – SA420 – KOGAV **124.105 MHz**

ACFT unable to follow RNAV SID: Report “unable RNAV SID due RNAV type” to Clearance Delivery and “unable RNAV SID” to STOCKHOLM DEPARTURE at first contact.  
Climb on track 250° to 1.8 NM ESA (MIN 600 ft before turn). Turn right to track 013° (MAX IAS 220 kt until established on track 013°). Expect vectoring to KOGAV.

## RNAV SID NOSLI 4K (NOSLI FOUR KILO DEPARTURE)

Path Term	Waypoint Identifier	Fly-over	Course °M(°T)	Dist (NM)	Turn Dir	Altitude (ft AMSL)	Speed Limits (kt)	VPA/RDH (°/ft)	Rec Navaid	Nav Spec
CF	SA871	Y	250°(255.9°)	0.7	-	-	-	-	ARL	RNAV 1
CA	-	-	250°(255.9°)	-	-	+600	-	-	-	RNAV 1
DF	SA861	-	-	-	-	-	-	-	-	RNAV 1
TF	NOSLI	-	193°(199.2°)	37.3	L	-	-	-	-	RNAV 1

SID instruction: Climb to SA871 on course 250°. At or above 600 ft turn right direct to SA861 – NOSLI **124.105 MHz**

ACFT unable to follow RNAV SID: Report “unable RNAV SID due RNAV type” to Clearance Delivery and “unable RNAV SID” to STOCKHOLM DEPARTURE at first contact.  
Climb on track 250° to 1.8 NM ESA (MIN 600 ft before turn). Turn right to track 265°. Expect vectoring to NOSLI.

## RNAV SID PETEV 2K (PETEV TWO KILO DEPARTURE)

Path Term	Waypoint Identifier	Fly-over	Course °M(°T)	Dist (NM)	Turn Dir	Altitude (ft AMSL)	Speed Limits (kt)	VPA/RDH (°/ft)	Rec Navaid	Nav Spec
CF	SA871	Y	250°(255.9°)	0.7	-	-	-	-	ARL	RNAV 1
CA	-	-	250°(255.9°)	-	-	+600	-	-	-	RNAV 1
DF	SA861	-	-	-	-	-	-	-	-	RNAV 1
TF	PETEV	-	210°(216.2°)	33.5	L	-	-	-	-	RNAV 1

SID instruction: Climb to SA871 on course 250°. At or above 600 ft turn right direct to SA861 – PETEV **124.105 MHz**

ACFT unable to follow RNAV SID: Report “unable RNAV SID due RNAV type” to Clearance Delivery and “unable RNAV SID” to STOCKHOLM DEPARTURE at first contact.  
Climb on track 250° to 1.8 NM ESA (MIN 600 ft before turn). Turn right to track 265°. Expect vectoring to PETEV.

**RNAV SID RESNA 4K (RESNA FOUR KILO DEPARTURE)**

Path Term	Waypoint Identifier	Fly-over	Course °M(°T)	Dist (NM)	Turn Dir	Altitude (ft AMSL)	Speed Limits (kt)	VPA/RDH (°/ft)	Rec Navaid	Nav Spec
CF	SA871	Y	250°(255.9°)	0.7	-	-	-	-	ARL	RNAV 1
CA	-	-	250°(255.9°)	-	-	+600	-	-	-	RNAV 1
DF	SA862	-	-	-	R	-	-220	-	-	RNAV 1
TF	RESNA	-	360°(005.5°)	35.9	-	-	-	-	-	RNAV 1

SID instruction: Climb to SA871 on course 250°. At or above 600 ft turn right direct to SA862 (MAX IAS 220 kt until SA862) – RESNA **124.105 MHz**

ACFT unable to follow RNAV SID: Report “unable RNAV SID due RNAV type” to Clearance Delivery and “unable RNAV SID” to STOCKHOLM DEPARTURE at first contact.  
Climb on track 250° to 1.8 NM ESA (MIN 600 ft before turn). Turn right to track 013° (MAX IAS 220 kt until established on track 013°). Expect vectoring to RESNA.

**RNAV SID TOVRI 5K (TOVRI FIVE KILO DEPARTURE)**

Path Term	Waypoint Identifier	Fly-over	Course °M(°T)	Dist (NM)	Turn Dir	Altitude (ft AMSL)	Speed Limits (kt)	VPA/RDH (°/ft)	Rec Navaid	Nav Spec
CF	SA871	Y	250°(255.9°)	0.7	-	-	-	-	ARL	RNAV 1
CA	-	-	250°(255.9°)	-	-	+600	-	-	-	RNAV 1
DF	SA419	-	-	-	R	-	-220	-	-	RNAV 1
TF	TOVRI	-	085°(090.8°)	23.3	R	-	-	-	-	RNAV 1

SID instruction: Climb to SA871 on course 250°. At or above 600 ft turn right direct to SA419 (MAX IAS 220 kt until SA419) – TOVRI **130.330 MHz**

ACFT unable to follow RNAV SID: Report “unable RNAV SID due RNAV type” to Clearance Delivery and “unable RNAV SID” to STOCKHOLM DEPARTURE at first contact.  
Climb on track 250° to 1.8 NM ESA (MIN 600 ft before turn). Turn right to track 040° (MAX IAS 220 kt until established on track 040°). Expect vectoring to TOVRI.