

AIP SVERIGE/SWEDEN

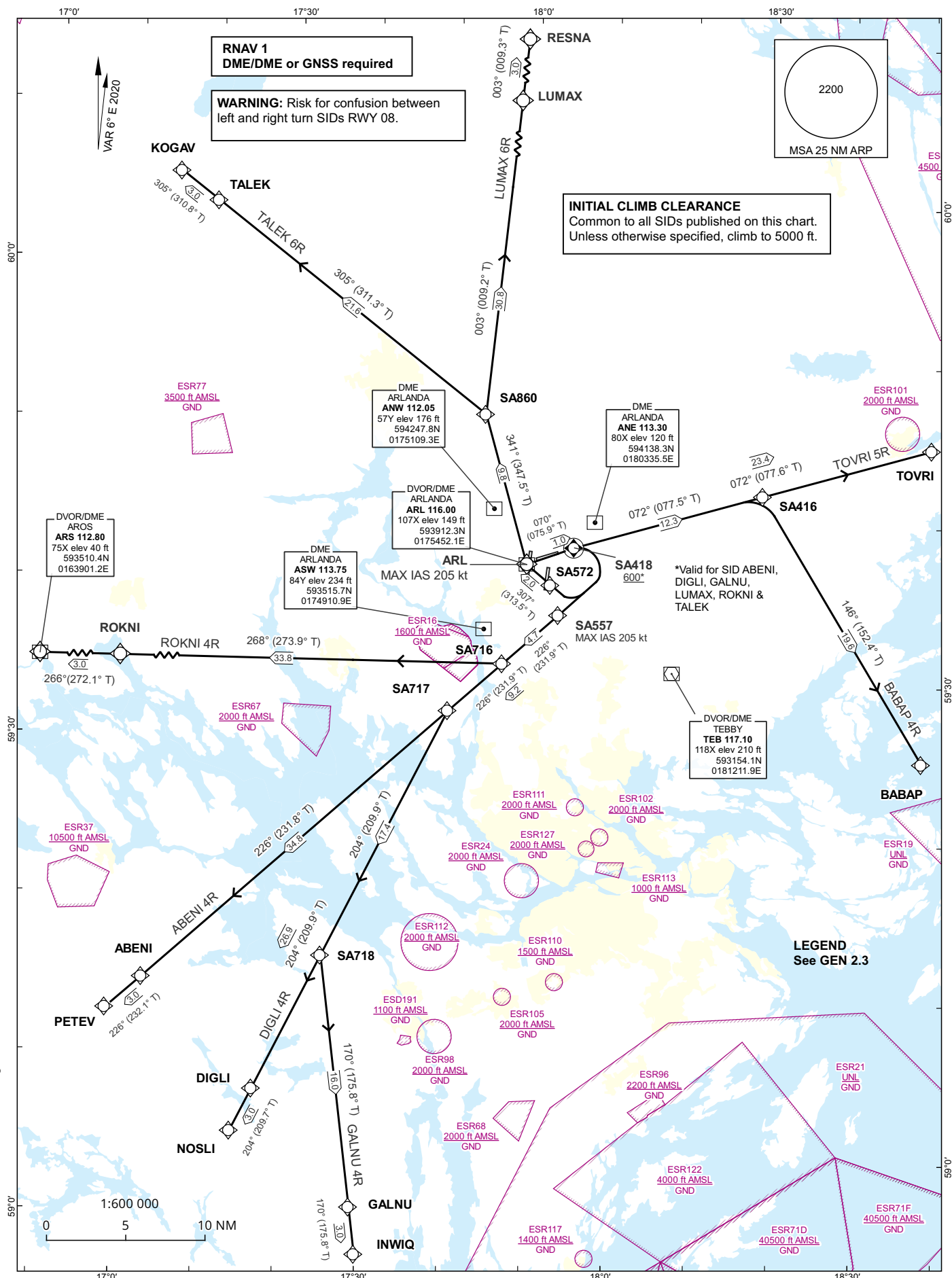
STANDARD INSTRUMENT DEPARTURE CHART (SID) - ICAO

HGT and ALT in ft
BRG are MAG (True)
TA 5000 ft AMSL

ARLANDA TOWER	128.730
ARLANDA ATIS DEP	121.630
STOCKHOLM APPROACH	123.755

STOCKHOLM/ARLANDA RNAV RWY 08 Right turn

ABENI 4R, BABAP 4R, DIGLI 4R, GALNU 4R, LUMAX 6R, ROKNI 4R, TALEK 6R, TOVRI 5R



CHANGE: Stockholm Control changed to STOCKHOLM DEPARTURE. Editorial.

Prescribed Coding of RNAV SID for RWY 08 Right turn

RNAV SID ROKNI 4R (ROKNI FOUR ROMEO DEPARTURE)

Path Term	Waypoint Identifier	Fly-over	Course °M(°T)	Dist (NM)	Turn Dir	Altitude (ft AMSL)	Speed Limits (kt)	VPA/RDH (°/ft)	Rec Navaid	Nav Spec
CF	SA418	Y	070°(075.9°)	1.0	-	-	-	-	ARL	RNAV 1
CA	-	-	070°(075.9°)	-	-	+600	-	-	-	RNAV 1
DF	SA557	-	-	-	R	-	-205	-	-	RNAV 1
TF	SA716	-	226°(231.9°)	4.7	-	-	-	-	-	RNAV 1
TF	ROKNI	-	268°(273.9°)	33.8	-	-	-	-	-	RNAV 1
TF	ARS	-	266°(272.1°)	3.0	-	-	-	-	-	RNAV 1

SID instruction: Climb to SA418 on course 070°. At or above 600 ft turn right direct to SA557 (MAX IAS 205 kt until SA557) – SA716 – ROKNI – ARS **124.105 MHz**

ACFT unable to follow RNAV SID: Report “unable RNAV SID due RNAV type” to Clearance Delivery and “unable RNAV SID” to STOCKHOLM DEPARTURE at first contact.
Climb on track 070° to 3.2 NM ARL (MIN 600 ft before turn). Turn right to track 226° (MAX IAS 205 kt until established on track 226°). Expect vectoring to ARS.

RNAV SID ABENI 4R (ABENI FOUR ROMEO DEPARTURE)

Path Term	Waypoint Identifier	Fly-over	Course °M(°T)	Dist (NM)	Turn Dir	Altitude (ft AMSL)	Speed Limits (kt)	VPA/RDH (°/ft)	Rec Navaid	Nav Spec
CF	SA418	Y	070°(075.9°)	1.0	-	-	-	-	ARL	RNAV 1
CA	-	-	070°(075.9°)	-	-	+600	-	-	-	RNAV 1
DF	SA557	-	-	-	R	-	-205	-	-	RNAV 1
TF	ABENI	-	226°(231.8°)	34.8	-	-	-	-	-	RNAV 1
TF	PETEV	-	226°(232.1°)	3.0	-	-	-	-	-	RNAV 1

SID instruction: Climb to SA418 on course 070°. At or above 600 ft turn right direct to SA557 (MAX IAS 205 kt until SA557) – ABENI – PETEV **124.105 MHz**

ACFT unable to follow RNAV SID: Report “unable RNAV SID due RNAV type” to Clearance Delivery and “unable RNAV SID” to STOCKHOLM DEPARTURE at first contact.
Climb on track 070° to 3.2 NM ARL (MIN 600 ft before turn). Turn right to track 226° (MAX IAS 205 kt until established on track 226°). Expect vectoring to PETEV.

RNAV SID DIGLI 4R (DIGLI FOUR ROMEO DEPARTURE)

Path Term	Waypoint Identifier	Fly-over	Course °M(°T)	Dist (NM)	Turn Dir	Altitude (ft AMSL)	Speed Limits (kt)	VPA/RDH (°/ft)	Rec Navaid	Nav Spec
CF	SA418	Y	070°(075.9°)	1.0	-	-	-	-	ARL	RNAV 1
CA	-	-	070°(075.9°)	-	-	+600	-	-	-	RNAV 1
DF	SA557	-	-	-	R	-	-205	-	-	RNAV 1
TF	SA717	-	226°(231.9°)	9.2	-	-	-	-	-	RNAV 1
TF	DIGLI	-	204°(209.9°)	26.9	-	-	-	-	-	RNAV 1
TF	NOSLI	-	204°(209.7°)	3.0	-	-	-	-	-	RNAV 1

SID instruction: Climb to SA418 on course 070°. At or above 600 ft turn right direct to SA557 (MAX IAS 205 kt until SA557) – SA717 – DIGLI – NOSLI **124.105 MHz**

ACFT unable to follow RNAV SID: Report “unable RNAV SID due RNAV type” to Clearance Delivery and “unable RNAV SID” to STOCKHOLM DEPARTURE at first contact.
Climb on track 070° to 3.2 NM ARL (MIN 600 ft before turn). Turn right to track 226° (MAX IAS 205 kt until established on track 226°). Expect vectoring to NOSLI.

RNAV SID GALNU 4R (GALNU FOUR ROMEO DEPARTURE)

Path Term	Waypoint Identifier	Fly-over	Course °M(°T)	Dist (NM)	Turn Dir	Altitude (ft AMSL)	Speed Limits (kt)	VPA/RDH (°/ft)	Rec Navaid	Nav Spec
CF	SA418	Y	070°(075.9°)	1.0	-	-	-	-	ARL	RNAV 1
CA	-	-	070°(075.9°)	-	-	+600	-	-	-	RNAV 1
DF	SA557	-	-	-	R	-	-205	-	-	RNAV 1
TF	SA717	-	226°(231.9°)	9.2	-	-	-	-	-	RNAV 1
TF	SA718	-	204°(209.9°)	17.4	-	-	-	-	-	RNAV 1
TF	GALNU	-	170°(175.8°)	16.0	-	-	-	-	-	RNAV 1
TF	INWIQ	-	170°(175.8°)	3.0	-	-	-	-	-	RNAV 1

SID instruction: Climb to SA418 on course 070°. At or above 600 ft turn right direct to SA557 (MAX IAS 205 kt until SA557) – SA717 – SA718 – GALNU – INWIQ **124.105 MHz**

ACFT unable to follow RNAV SID: Report “unable RNAV SID due RNAV type” to Clearance Delivery and “unable RNAV SID” to STOCKHOLM DEPARTURE at first contact.
Climb on track 070° to 3.2 NM ARL (MIN 600 ft before turn). Turn right to track 226° (MAX IAS 205 kt until established on track 226°). Expect vectoring to INWIQ.

RNAV SID BABAP 4R (BABAP FOUR ROMEO DEPARTURE)

Path Term	Waypoint Identifier	Fly-over	Course °M(°T)	Dist (NM)	Turn Dir	Altitude (ft AMSL)	Speed Limits (kt)	VPA/RDH (°/ft)	Rec Navaid	Nav Spec
CF	SA418	Y	070°(075.9°)	1.0	-	-	-	-	ARL	RNAV 1
TF	SA416	-	072°(077.5°)	12.3	-	-	-	-	-	RNAV 1
TF	BABAP	-	146°(152.4°)	19.6	R	-	-	-	-	RNAV 1

SID instruction: Climb to SA418 on course 070° – SA416 – BABAP **130.330 MHz**

ACFT unable to follow RNAV SID: Report “unable RNAV SID due RNAV type” to Clearance Delivery and “unable RNAV SID” to STOCKHOLM DEPARTURE at first contact.
Climb on track 070°. Expect vectoring to BABAP.

RNAV SID TOVRI 5R (TOVRI FIVE ROMEO DEPARTURE)

Path Term	Waypoint Identifier	Fly-over	Course °M(°T)	Dist (NM)	Turn Dir	Altitude (ft AMSL)	Speed Limits (kt)	VPA/RDH (°/ft)	Rec Navaid	Nav Spec
CF	SA418	Y	070°(075.9°)	1.0	-	-	-	-	ARL	RNAV 1
TF	TOVRI	-	072°(077.6°)	23.4	-	-	-	-	-	RNAV 1

SID instruction: Climb to SA418 on course 070° – TOVRI **130.330 MHz**

ACFT unable to follow RNAV SID: Report “unable RNAV SID due RNAV type” to Clearance Delivery and “unable RNAV SID” to STOCKHOLM DEPARTURE at first contact.
Climb on track 070°. Expect vectoring to TOVRI.

RNAV SID LUMAX 6R (LUMAX SIX ROMEO DEPARTURE)

Path Term	Waypoint Identifier	Fly-over	Course °M(°T)	Dist (NM)	Turn Dir	Altitude (ft AMSL)	Speed Limits (kt)	VPA/RDH (°/ft)	Rec Navaid	Nav Spec
CF	SA418	Y	070°(075.9°)	1.0	-	-	-	-	ARL	RNAV 1
CA	-	-	070°(075.9°)	-	-	+600	-	-	-	RNAV 1
DF	SA572	-	-	-	R	-	-	-	-	RNAV 1
TF	ARL	-	307°(313.5°)	2.0	-	-	-205	-	-	RNAV 1
TF	SA860	-	341°(347.5°)	9.8	-	-	-	-	-	RNAV 1
TF	LUMAX	-	003°(009.2°)	30.8	-	-	-	-	-	RNAV 1
TF	RESNA	-	003°(009.3°)	3.0	-	-	-	-	-	RNAV 1

SID instruction: Climb to SA418 on course 070°. At or above 600 ft turn right direct to SA572 – ARL (MAX IAS 205 kt until ARL) – SA860 – LUMAX – RESNA **124.105 MHz**

ACFT unable to follow RNAV SID: Report “unable RNAV SID due RNAV type” to Clearance Delivery and “unable RNAV SID” to STOCKHOLM DEPARTURE at first contact.
Climb on track 070° to 3.2 NM ARL (MIN 600 ft before turn). Turn right to track 258°. Intercept R-127 ARL and proceed to ARL (MAX IAS 205 kt until ARL). Turn right to track 340°. Expect vectoring to RESNA.

RNAV SID TALEK 6R (TALEK SIX ROMEO DEPARTURE)

Path Term	Waypoint Identifier	Fly-over	Course °M(°T)	Dist (NM)	Turn Dir	Altitude (ft AMSL)	Speed Limits (kt)	VPA/RDH (°/ft)	Rec Navaid	Nav Spec
CF	SA418	Y	070°(075.9°)	1.0	-	-	-	-	ARL	RNAV 1
CA	-	-	070°(075.9°)	-	-	+600	-	-	-	RNAV 1
DF	SA572	-	-	-	R	-	-	-	-	RNAV 1
TF	ARL	-	307°(313.5°)	2.0	-	-	-205	-	-	RNAV 1
TF	SA860	-	341°(347.5°)	9.8	-	-	-	-	-	RNAV 1
TF	TALEK	-	305°(311.3°)	21.6	-	-	-	-	-	RNAV 1
TF	KOGAV	-	305°(310.8°)	3.0	-	-	-	-	-	RNAV 1

SID instruction: Climb to SA418 on course 070°. At or above 600 ft turn right direct to SA572 – ARL (MAX IAS 205 kt until ARL) – SA860 – TALEK – KOGAV **124.105 MHz**

ACFT unable to follow RNAV SID: Report “unable RNAV SID due RNAV type” to Clearance Delivery and “unable RNAV SID” to STOCKHOLM DEPARTURE at first contact.
Climb on track 070° to 3.2 NM ARL (MIN 600 ft before turn). Turn right to track 258°. Intercept R-127 ARL and proceed to ARL (MAX IAS 205 kt until ARL). Turn right to track 340°. Expect vectoring to KOGAV.