

VISUAL APPROACH CHART - ICAO

AD ELEV 65 FEET

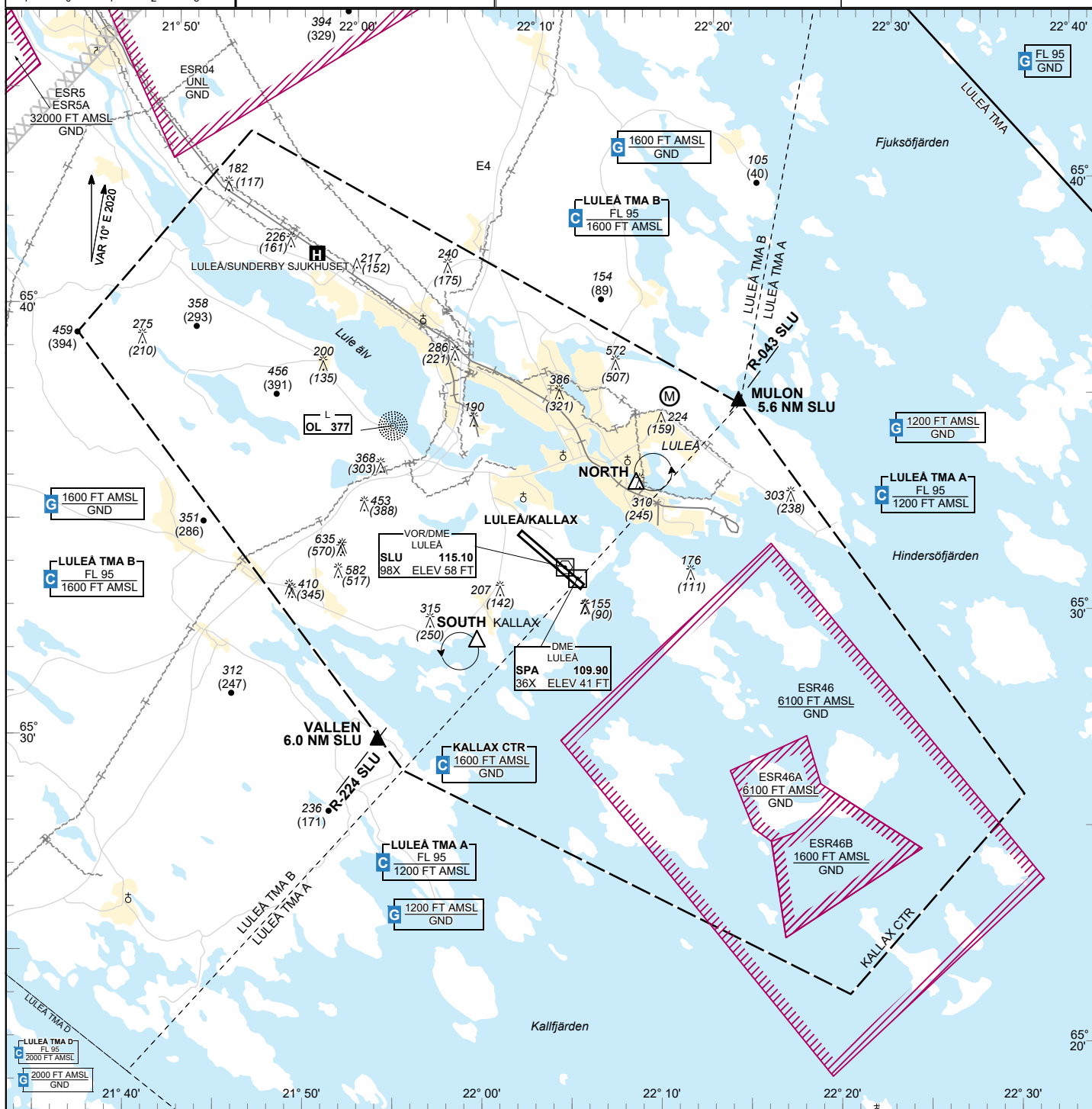
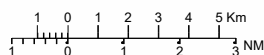
ELEV and ALT in ft
HGT in ft above AD ELEV

KALLAX TOWER
KALLAX APPROACH

128.205
125.455

LULEÅ/KALLAX
SWEDEN

1:250000



Communication failure

- 1 SQUAWK 7600
- 2 Enter CTR via MULON – Holding NORTH or via VALLEN – Holding SOUTH at or below 1000 ft GND to traffic circuit. Transmit blind your intentions.
- 3 Flash LDG-lights and watch TWR for optical signals

Remark

Model flying sector Jupiter

RWY NR	THR ELEV	PAPI (MEHT)
14	65.3 ft	Left/2.86° (57 ft)
32	21.0 ft	Left/2.86° (57 ft)

Entry / exit point

MULON 653549N 0221850E
VALLEN 652855N 0215630E

Holding

NORTH: Hold north east of the steelworks, north east of point 653411N 0221234E

SOUTH: Hold at waterarea south west Kallax, south west of point 653057N 0220240E

Legend

See GEN 2.3

CHANGE: FREQ