

LULEÅ/Kallax

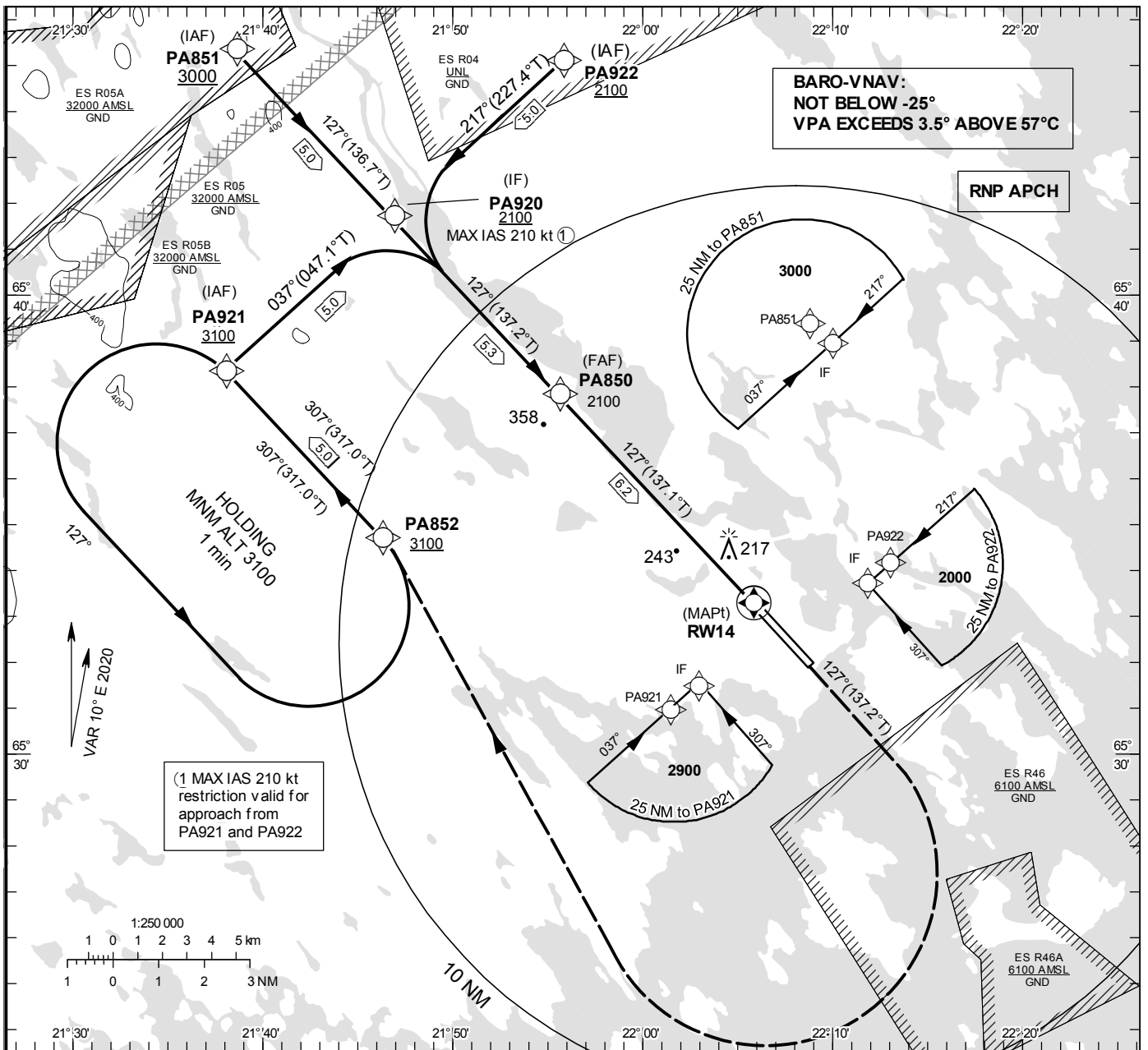
RNP RWY 14

(LNAV, LNAV/VNAV only)

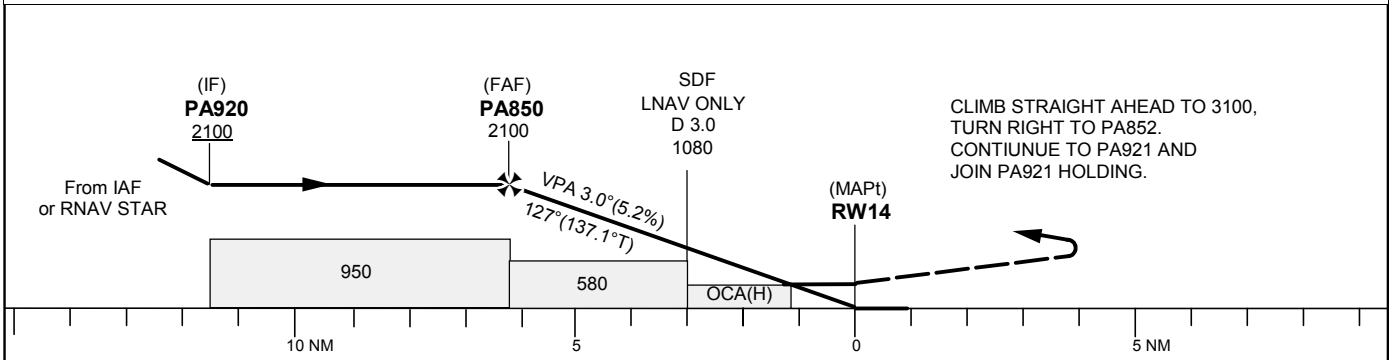
INSTRUMENT APPROACH CHART – ICAO

THR ELEV 65.3 ft, AD ELEV 65 ft
OCH are related to THR.
BRG are MAG (True).
ALT, HGT and ELEV in ft.

KALLAX TOWER	128.205
KALLAX APPROACH	125.455



TA 5000 ft AMSL RDH 50 ft



Cat of ACFT	OCA (H)				Final approach Dist to RW14	Distance FAF-MAPt 6.2 NM						
	A	B	C	D		6	5	4	3	2		
LNAV/VNAV	348 (283)	360 (295)	368 (303)	378 (313)	ALT	2030	1710	1390	1070	750		
LNAV	490 (430)				GS	kt	80	100	120	140	160	180
					Rate of descent	ft/min	425	530	635	745	850	955

CHANGE: Frequency

LULEÅ/Kallax

RNP RWY 14 via PA921

Path Term	Waypoint Identifier	Fly-over	Course °M(°T)	Dist (NM)	Turn Dir	Rest Alts (ft AMSL)	Speed Limits (kt)	VPA/RDH (°/ft)	Rec Navaid	Navigation Specification
IF	PA921	-	-	-	-	+3100	-	-	-	RNP APCH
TF	PA920	-	037°(047.1°)	5.0	-	+2100	-210	-	-	RNP APCH

RNP RWY 14 via PA922

Path Term	Waypoint Identifier	Fly-over	Course °M(°T)	Dist (NM)	Turn Dir	Rest Alts (ft AMSL)	Speed Limits (kt)	VPA/RDH (°/ft)	Rec Navaid	Navigation Specification
IF	PA922	-	-	-	-	+2100	-	-	-	RNP APCH
TF	PA920	-	217°(227.4°)	5.0	-	+2100	-210	-	-	RNP APCH

RNP RWY 14 via PA851

Path Term	Waypoint Identifier	Fly-over	Course °M(°T)	Dist (NM)	Turn Dir	Rest Alts (ft AMSL)	Speed Limits (kt)	VPA/RDH (°/ft)	Rec Navaid	Navigation Specification
IF	PA851	-	-	-	-	+3000	-	-	-	RNP APCH
TF	PA920	-	127°(136.7°)	5.0	-	+2100	-	-	-	RNP APCH

Path Term	Waypoint Identifier	Fly-over	Course °M(°T)	Dist (NM)	Turn Dir	Rest Alts (ft AMSL)	Speed Limits (kt)	VPA/RDH (°/ft)	Rec Navaid	Navigation Specification
IF	PA920	-	-	-	-	+2100	-	-	-	RNP APCH
TF	PA850	-	127°(137.2°)	5.3	-	@2100	-	-	-	RNP APCH
TF	RW14	Y	127°(137.1°)	6.2	-	@115	-	-3.0/50	-	RNP APCH
CA	-	-	127°(137.2°)	-	-	+3100	-	-	-	RNP APCH
DF	PA852	-	-	-	R	-	-	-	-	RNP APCH
TF	PA921	-	307°(317.0°)	5.0	-	+3100	-	-	-	RNP APCH

Holding PA921

Path Term	Waypoint Identifier	Fly-over	Course °M(°T)	Dist (NM)	Turn Dir	Rest Alts (ft AMSL)	Speed Limits (kt)	VPA/RDH (°/ft)	Rec Navaid	Navigation Specification
HM	PA921	Y	307°(317.0°)	-	L	+3100	-	-	-	RNAV 1