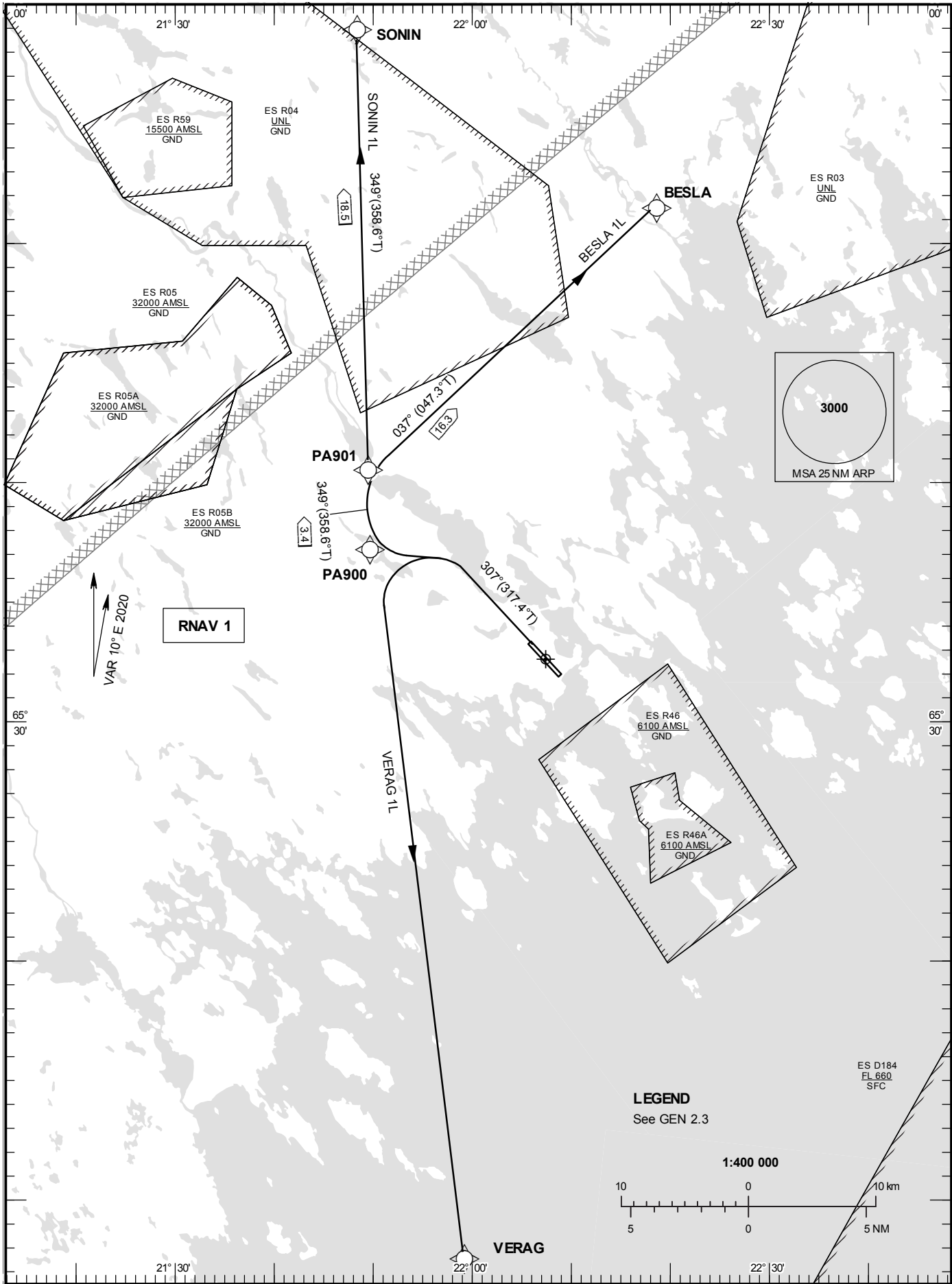


**STANDARD INSTRUMENT
DEPARTURE CHART (SID) -
ICAO**

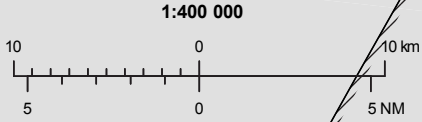
HGT and ALT in ft
BRG are MAG
TA 5000 ft AMSL

KALLAX TOWER	128.205
KALLAX APPROACH	125.455

RNAV (GNSS) SID RWY 32



LEGEND
See GEN 2.3



CHANGE: Frequency

LULEÅ/Kallax**Prescribed Coding of RNAV SID for RWY 32**

RNAV 1 for positioning update.

Operators unable to fly RNAV 1 shall inform ATC "UNABLE RNAV SID". Radar vectors will then be provided.

For ATC reasons, aircraft proceeding on SID shall use 6.6% (400 ft/NM) as minimum climb gradient. Aircraft unable to meet with this procedure shall inform ATC.

BESLA 1L

Path Term	Waypoint Identifier	Fly-over	Course °M(°T)	Dist (NM)	Turn Dir	Rest Alts (ft AMSL)	Speed Limits (kt)	VPA/RDH (°/ft)	Rec Navaid	Navigation Specification
CA	-	-	307°(317.4°)	-	L	@1000	-	-	-	RNAV 1
DF	PA900	-	-	-	-	-	-	-	-	RNAV 1
TF	PA901	-	349°(358.6°)	3.4	-	-	-	-	-	RNAV 1
TF	BESLA	-	037°(047.3°)	16.3	-	-	-	-	-	RNAV 1

SID instruction: Climb on track 307°M to 1000 ft, turn left to PA900 – PA901 – BESLA

SONIN 1L

Path Term	Waypoint Identifier	Fly-over	Course °M(°T)	Dist (NM)	Turn Dir	Rest Alts (ft AMSL)	Speed Limits (kt)	VPA/RDH (°/ft)	Rec Navaid	Navigation Specification
CA	-	-	307°(317.4°)	-	L	@1000	-	-	-	RNAV 1
DF	PA900	-	-	-	-	-	-	-	-	RNAV 1
TF	PA901	-	349°(358.6°)	3.4	-	-	-	-	-	RNAV 1
TF	SONIN	-	349°(358.6°)	18.5	-	-	-	-	-	RNAV 1

SID instruction: Climb on track 307°M to 1000 ft, turn left to PA900 – PA901 – SONIN

VERAG 1L

Path Term	Waypoint Identifier	Fly-over	Course °M(°T)	Dist (NM)	Turn Dir	Rest Alts (ft AMSL)	Speed Limits (kt)	VPA/RDH (°/ft)	Rec Navaid	Navigation Specification
CA	-	-	307°(317.4°)	-	L	@1000	-	-	-	RNAV 1
DF	VERAG	-	-	-	-	-	-	-	-	RNAV 1

SID instruction: Climb on track 307°M to 1000 ft, turn left to VERAG