

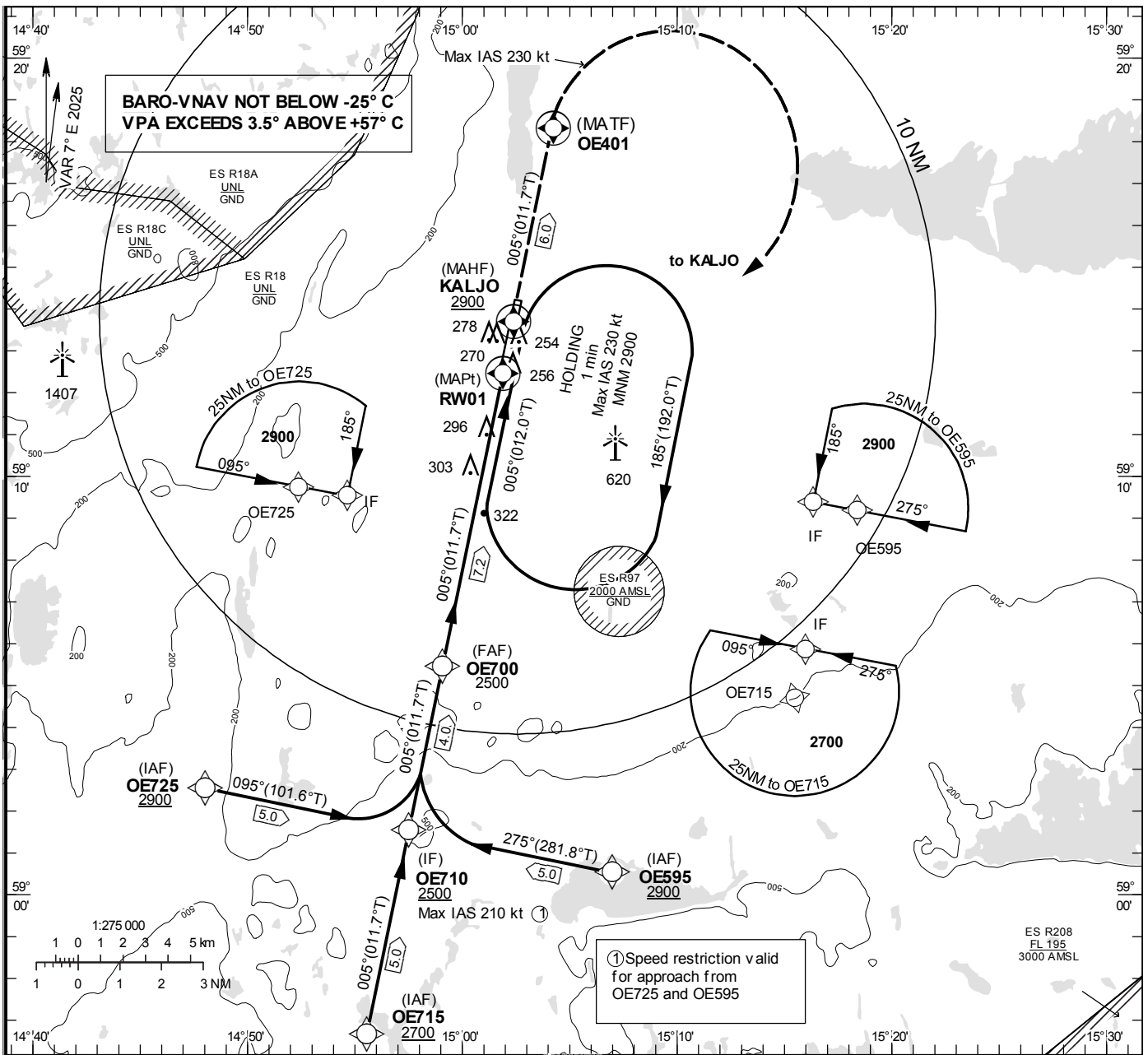
**ÖREBRO**  
**RNP RWY 01**

**INSTRUMENT APPROACH CHART – ICAO**

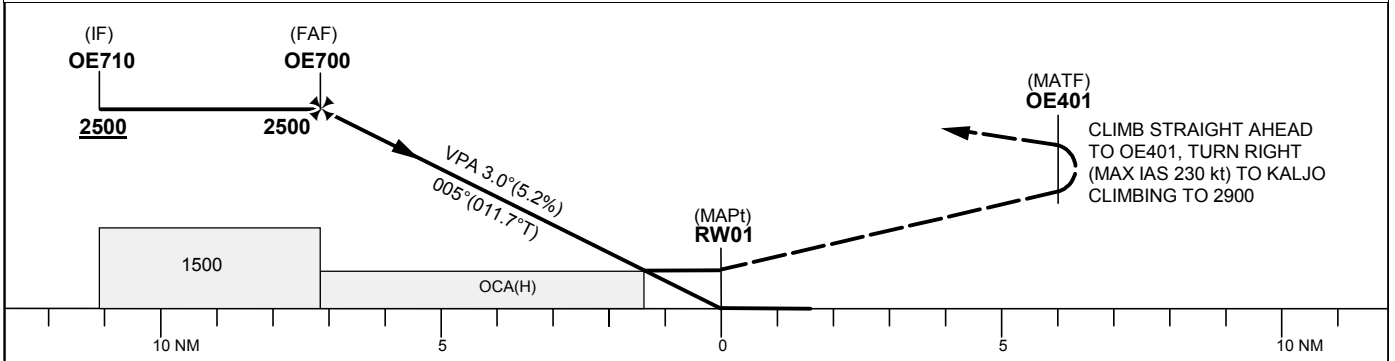
**THR ELEV 161.3 ft, AD ELEV 192 ft**  
OCH are related to THR.  
BRG are MAG (True).  
ALT, HGT and ELEV in ft.

ÖREBRO TOWER 120.280

EGNOS Ch 44271 E 01A



TA 5000 ft AMSL RDH 54 ft Missed Approach Max IAS 230 kt



Cat of ACFT	OCA (H)					Final approach Dist to RW 01	Distance FAF-MAPt 7.2 NM						
	A	B	C	D	D <sub>L</sub>		7	6	5	4	3	2	
LPV	384 (223)	396 (235)	421 (260)	431 (270)		ALT	2450	2130	1810	1490	1170	850	
LNAV/VNAV	387 (226)	399 (238)	407 (246)	439 (278)		GS	kt	80	100	120	140	160	180
LNAV			570 (410)			Rate of descent	ft/min	425	530	635	745	850	955
Circling	600 (410)	690 (500)		1020 (830)									

CHANGE: ESR208 remark removed

**ÖREBRO****RNP RWY 01 via OE595**

Path Desc	Waypoint Identifier	Fly-over	Course °M(°T)	Dist (NM)	Turn Dir	Altitude	Speed	VPA/RDH	Rec Navaid	Navigation Specification
IF	OE595	-	-	-	-	+2900	-	-	-	RNP APCH
TF	OE710	-	275°(281.8°)	5.0	R	+2500	-210	-	-	RNP APCH

**RNP RWY 01 via OE715**

Path Desc	Waypoint Identifier	Fly-over	Course °M(°T)	Dist (NM)	Turn Dir	Altitude	Speed	VPA/RDH	Rec Navaid	Navigation Specification
IF	OE715	-	-	-	-	+2700	-	-	-	RNP APCH
TF	OE710	-	005°(011.7°)	5.0	-	+2500	-	-	-	RNP APCH

**RNP RWY 01 via OE725**

Path Desc	Waypoint Identifier	Fly-over	Course °M(°T)	Dist (NM)	Turn Dir	Altitude	Speed	VPA/RDH	Rec Navaid	Navigation Specification
IF	OE725	-	-	-	-	+2900	-	-	-	RNP APCH
TF	OE710	-	095°(101.6°)	5.0	L	+2500	-210	-	-	RNP APCH

Path Desc	Waypoint Identifier	Fly-over	Course °M(°T)	Dist (NM)	Turn Dir	Altitude	Speed	VPA/RDH	Rec Navaid	Navigation Specification
IF	OE710	-	-	-	-	+2500	-	-	-	RNP APCH
TF	OE700	-	005°(011.7°)	4.0	-	@2500	-	-	-	RNP APCH
TF	RW01	Y	005°(011.7°)	7.2	-	@215	-	-3.0/54	-	RNP APCH
TF	OE401	Y	005°(011.7°)	6.0	-	-	-	-	-	RNP APCH
DF	KALJO	Y	-	-	R	+2900	-230	-	-	RNP APCH

**ESOE Holding KALJO**

Path Desc	Waypoint Identifier	Fly-over	Course °M(°T)	Dist (NM)	Turn Dir	Altitude	Speed	VPA/RDH	Rec Navaid	Navigation Specification
HM	KALJO	Y	005°(012.0°)	-	R	+2900	-230	-	-	RNAV 1

## FAS Data Block

## RNP RWY 01

## Input data

Operation Type	0
SBAS Provider	1 (EGNOS)
Airport Identifier	ESOE
Runway	01
Runway Letter	0 (None)
Approach Performance Designator	0
Route Indicator	
Reference Path Data Selector	0
Reference Path Identifier	E01A
LTP/FTP Latitude	591227.1675N
LTP/FTP Longitude	0150153.1465E
LTP/FTP Ellipsoidal Height (metres)	77.9
FPAP Latitude	591410.6860N
Delta FPAP Latitude (seconds)	103.5185
FPAP Longitude	0150234.9255E
Delta FPAP Longitude (seconds)	41.7790
Threshold Crossing Height	54.0
TCH Units Selector	0 (feet)
Glidepath Angle (degrees)	3.00
Course Width (metres)	105.00
Length Offset (metres)	0
HAL (metres)	40.0
VAL (metres)	50.0

## Output data

Data Block	10 05 OF 13 05 01 00 00 01 31 30 05 3F BC 68 19 F5 66 73 06 0B 17 BD 28 03 66 46 01 1C 02 2C 01 64 00 C8 FA 42 F5 F6 84
Calculated CRC Value	42F5F684

## Required Additional Data

ICAO Code	ES
LTP/FTP Orthometric Height (metres)	49.2