

VISUAL APPROACH CHART - ICAO

AD ELEV 1234 FEET

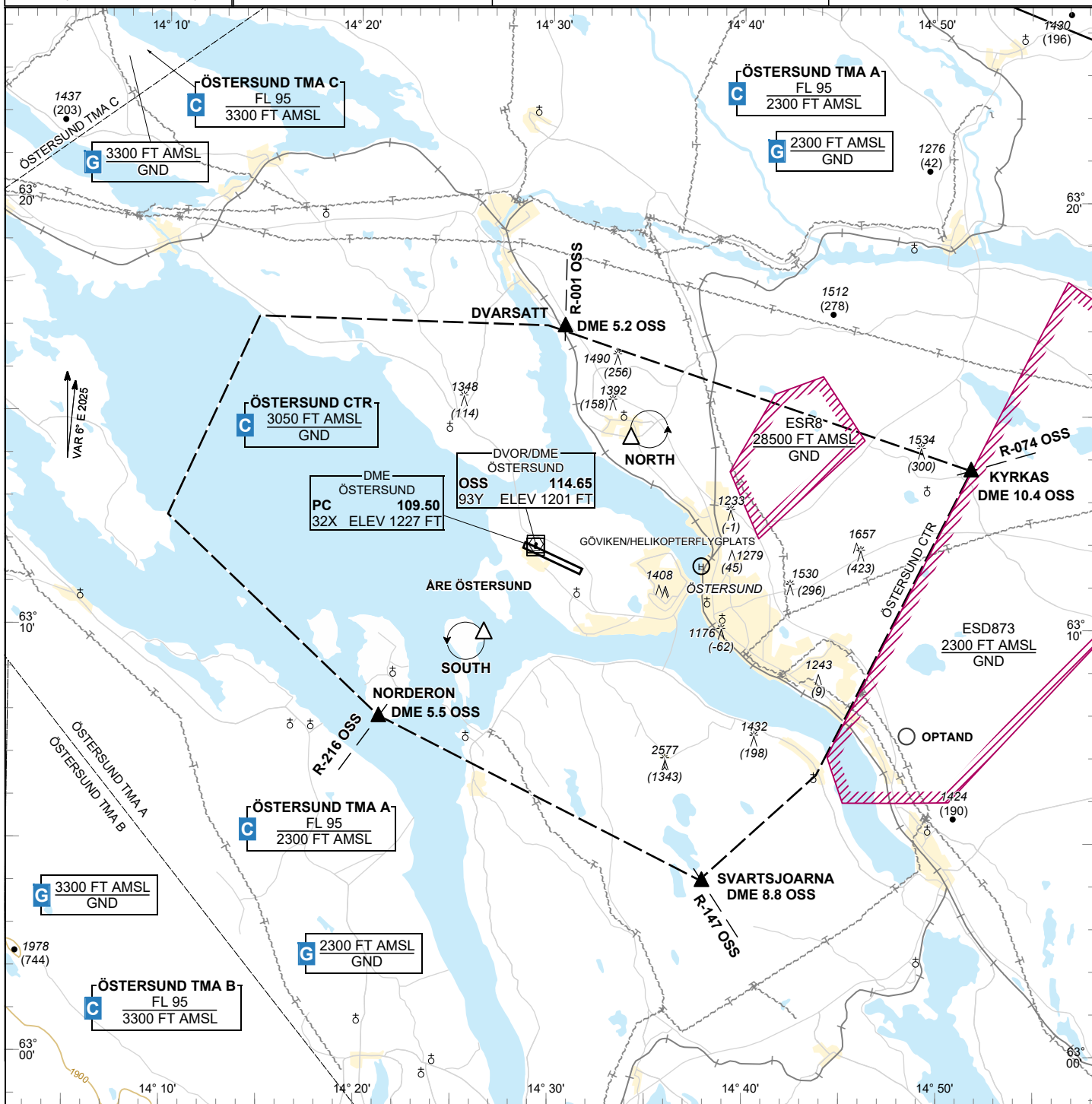
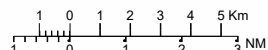
ÖSTERSUND TOWER 135.655

ÅRE ÖSTERSUND SWEDEN

ELEV and ALT in ft
HGT in ft above AD ELEV

TA 6000 AMSL

1:250000



Communication failure

- 1 SQUAWK 7600
- 2 Enter CTR via DVARSAATT – Holding NORTH or via NORDERON – Holding SOUTH at or below 2000 ft AMSL to traffic circuit. Transmit blind your intentions.
- 3 Flash LDG-lights and watch for optical signals from remote tower (position marked R-TWR on AD chart.)

Warning

During APCH risk for mix-up and LDG on the road NE RWY 12/30.
RC- aircraft below TMA at Optand Airfield.
Roadlights 2500 m SE THR 30, parallel to RWY.

RWY NR	THR ELEV	PAPI (MEHT)
12	1194.3 ft	Left/3.00° (54 ft)
30	1233 ft	Left/3.00° (68 ft)

Legend

See GEN 2.3

Entry / exit point

DVARSAATT	631705N 0143042E
KYRKAS	631344N 0145149E
SVARTSJOARNA	630407N 0143756E
NORDERON	630755N 0142110E

Holding

- NORTH:** Hold above east Ås, north east of point 631429N 0143409E
- SOUTH:** Hold above Andersön, south west of point 630954N 0142635E

CHANGE: VAR, AD ELEV, ESD873 new, L, DJ Withdrawn.