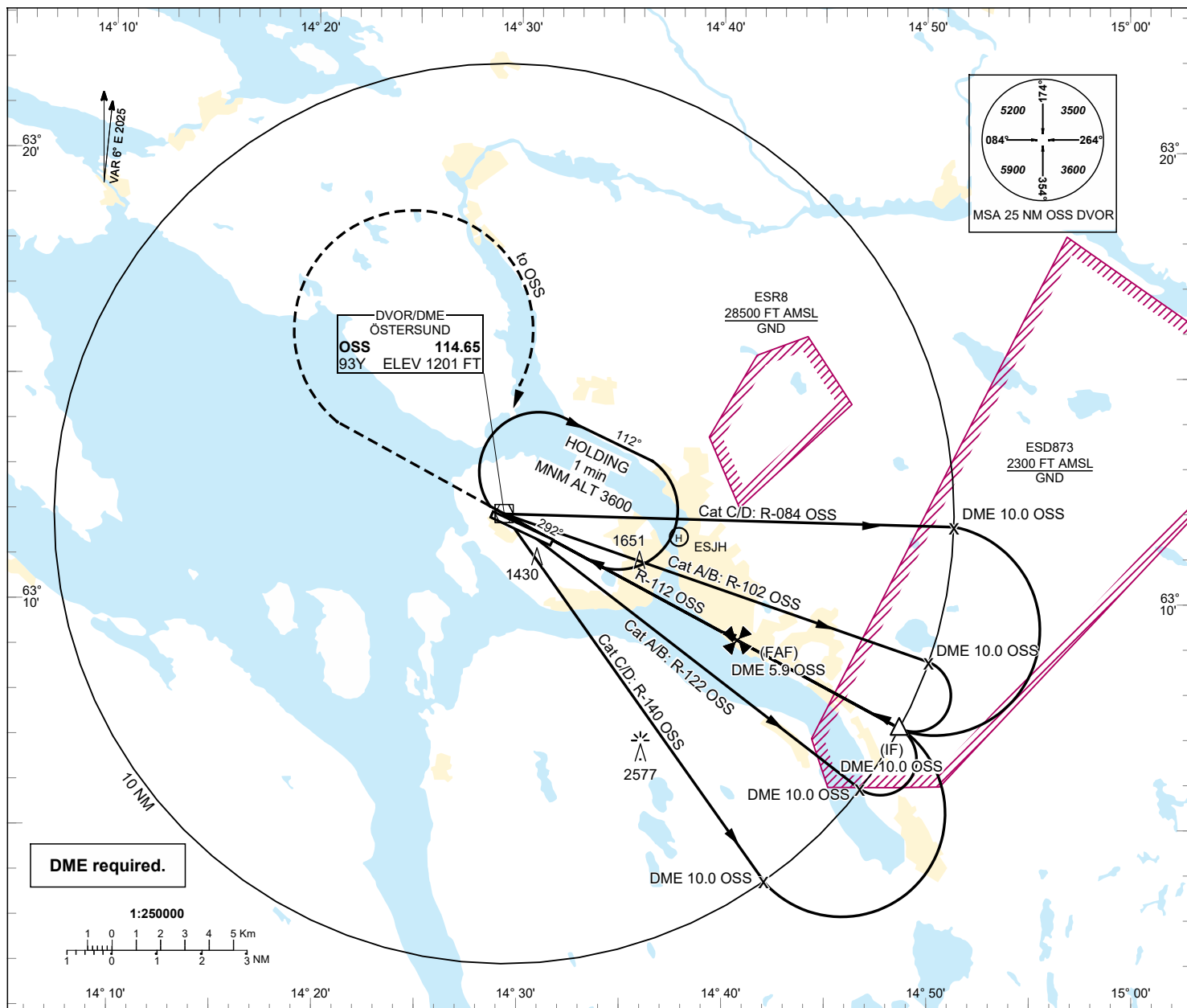


**INSTRUMENT APPROACH CHART - ICAO**

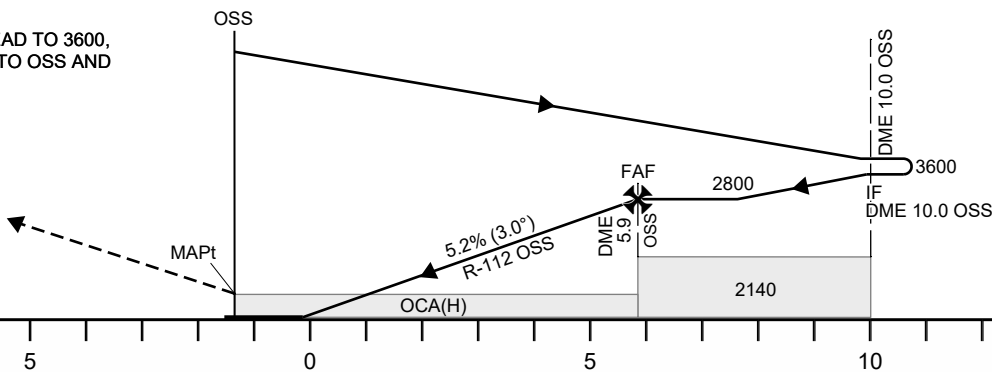
**THR ELEV 1234 ft AD ELEV 1234 ft**  
OCH are related to THR  
Circling OCH are related to AD ELEV  
BRG are MAG (TRUE)  
ALT, HGT and ELEV in ft

**ÖSTERSUND TOWER 135.655**



**TA 6000 ft AMSL** Final APCH line offset 3°

**MISSED APPROACH:**  
CLIMB STRAIGHT AHEAD TO 3600,  
TURN RIGHT DIRECT TO OSS AND  
JOIN OSS HOLDING



Cat of ACFT	OCA(OCH)			
	A	B	C	D
Straight-in Approach	1910(680)			
Circling	1910(680)	1960(730)	2050(820)	3010(1780)

Final approach	Distance FAF-MAPt 5.9 NM						
	DME OSS	NM	4	5	6	7	8
ALT	ft	2183	2501				
GS	kt	80	100	120	140	160	180
ROD	ft/min	425	530	635	745	850	955

CHANGE: THR ELEV, AD ELEV, OCA(H), VAR, MSA, MISAP, ESD873 new.