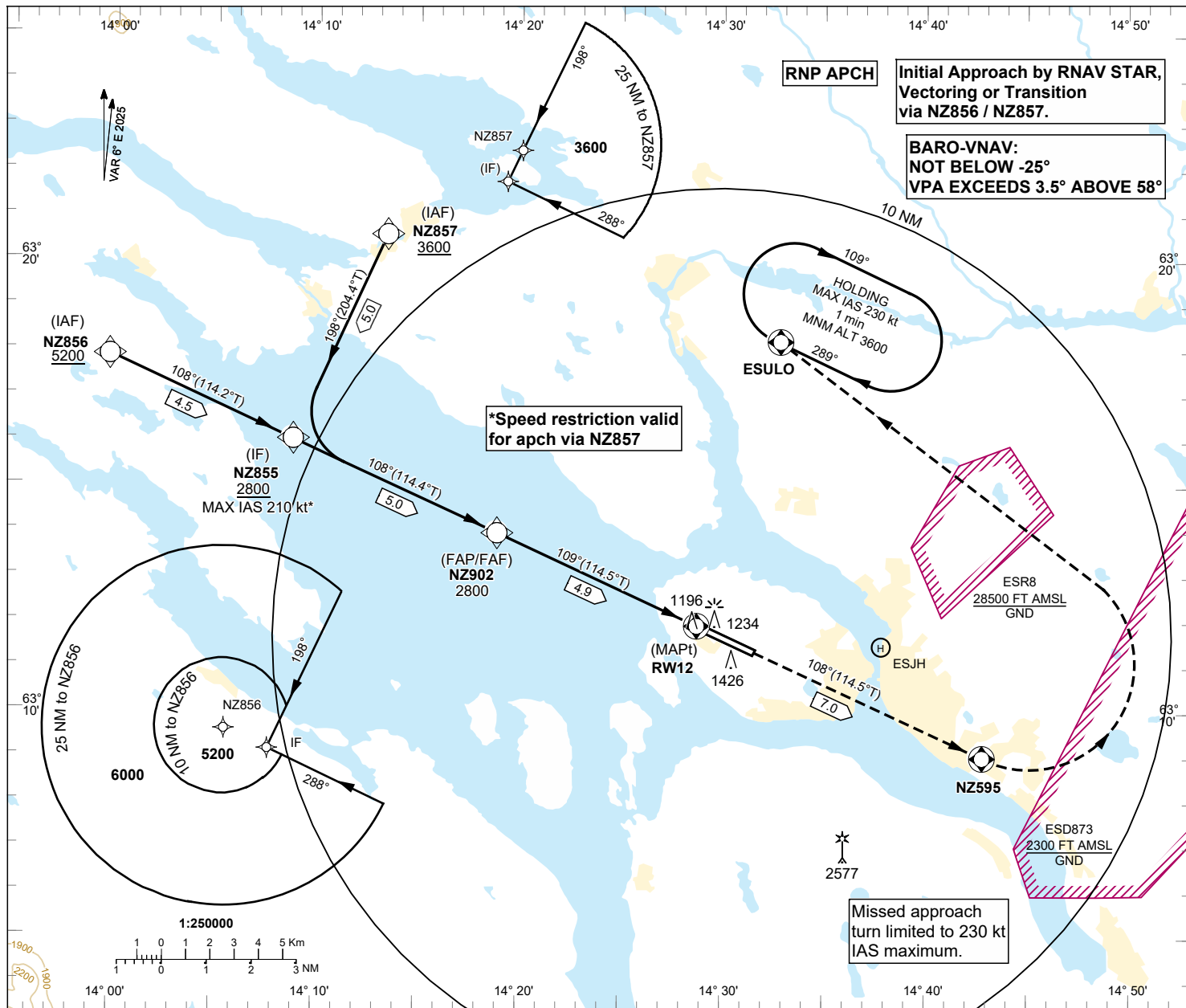


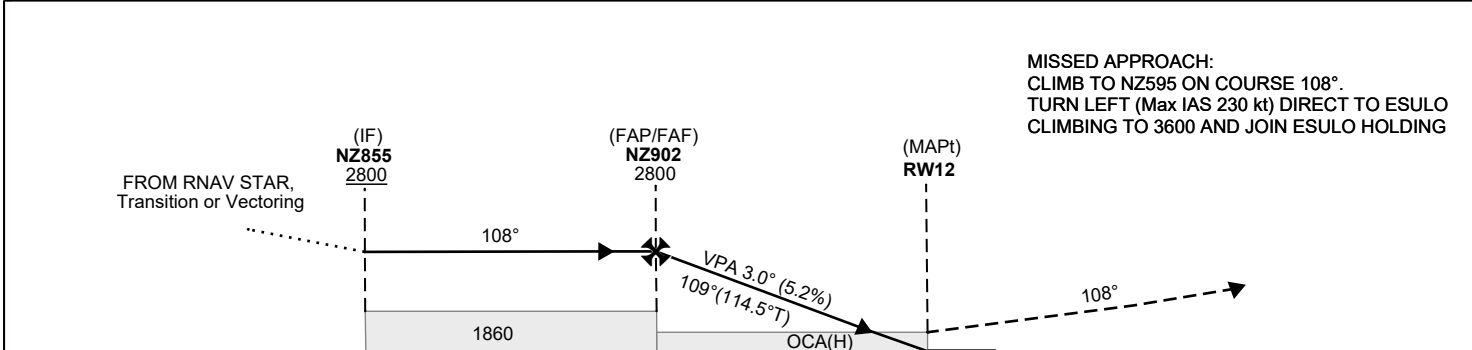
INSTRUMENT
APPROACH
CHART - ICAO

THR ELEV 1194.0 ft AD ELEV 1234 ft
OCH are related to THR
Circling OCH are related to AD ELEV
BRG are MAG (TRUE)
ALT, HGT and ELEV in ft

ÖSTERSUND TOWER 135.655



TA 6000 ft AMSL RDH 50.0 ft



MISSED APPROACH:
CLIMB TO NZ595 ON COURSE 108°.
TURN LEFT (Max IAS 230 kt) DIRECT TO ESULO
CLIMBING TO 3600 AND JOIN ESULO HOLDING

NM	15	10	5	0	5
----	----	----	---	---	---

Cat of ACFT	OCA(OCH)			
	A	B	C	D
LPV	1340(146)	1350(156)	1361(167)	1374(180)
LNAV/VNAV	1433(239)	1442(248)	1463(269)	1490(296)
LNAV	1570(380)	1570(380)	1570(380)	1570(380)

Final approach	Distance FAF-MAPT 4.9 NM						
	Dist to RWY12	NM	4	3	2		
ALT	ft	2518	2200	1881			
GS	kt	80	100	120	140	160	180
ROD	ft/min	425	530	635	745	850	955

CHANGE: New LPV, OCA(OCH), VAR, OBST., THR ELEV, TAA, ALT, TEMP. ESD873 new.

ÄRE ÖSTERSUND
RNP z RWY 12

Prescribed Coding RNP z RWY 12

RNP z RWY 12 via NZ855

Path Term	Waypoint Identifier	Fly-over	Course °M(°T)	Dist (NM)	Turn Dir	Rest Alts (ft AMSL)	Speed Limits (kt)	VPA/RDH (°/ft)	Rec Navaid	Navigation Specification
TF	NZ855	-	-	-	-	+2800	-	-	-	RNP APCH
TF	NZ902	-	108°(114.4°T)	5.0	-	@2800	-	-	-	RNP APCH
TF	RW12	Y	109°(114.4°T)	4.9	-	@1244	-	-3.00/50	-	RNP APCH
CF	NZ595	Y	108°(114.5°T)	7.0	-	-	-	-	OSS	RNP APCH
DF	ESULO	Y	-	-	L	+3600	-230	-	-	RNP APCH
HM	ESULO	-	289°(295.0°T)	-	R	+3600	-230	-	-	RNAV 1

RNP z RWY 12 via NZ856

Path Term	Waypoint Identifier	Fly-over	Course °M(°T)	Dist (NM)	Turn Dir	Rest Alts (ft AMSL)	Speed Limits (kt)	VPA/RDH (°/ft)	Rec Navaid	Navigation Specification
IF	NZ856	-	-	-	-	+5200	-	-	-	RNP APCH
TF	NZ855	-	108°(114.2°T)	4.5	-	+2800	-	-	-	RNP APCH
TF	NZ902	-	108°(114.4°T)	5.0	-	@2800	-	-	-	RNP APCH
TF	RW12	Y	109°(114.5°T)	4.9	-	@1244	-	-3.00/50	-	RNP APCH
CF	NZ595	Y	108°(114.5°T)	7.0	-	-	-	-	OSS	RNP APCH
DF	ESULO	Y	-	-	L	+3600	-230	-	-	RNP APCH
HM	ESULO	-	289°(295.0°T)	-	R	+3600	-230	-	-	RNAV 1

RNP z RWY 12 via NZ857

Path Term	Waypoint Identifier	Fly-over	Course °M(°T)	Dist (NM)	Turn Dir	Rest Alts (ft AMSL)	Speed Limits (kt)	VPA/RDH (°/ft)	Rec Navaid	Navigation Specification
IF	NZ857	-	-	-	-	+3600	-	-	-	RNP APCH
TF	NZ855	-	198°(204.4°T)	5.0	-	+2800	-210	-	-	RNP APCH
TF	NZ902	-	108°(114.4°T)	5.0	-	@2800	-	-	-	RNP APCH
TF	RW12	Y	109°(114.5°T)	4.9	-	@1244	-	-3.00/50	-	RNP APCH
CF	NZ595	Y	108°(114.5°T)	7.0	-	-	-	-	OSS	RNP APCH
DF	ESULO	Y	-	-	L	+3600	-230	-	-	RNP APCH
HM	ESULO	-	289°(295.0°T)	-	R	+3600	-230	-	-	RNAV 1

FAS Data Block

RNP RWY 12

Input data

Operation Type	0
SBAS Provider	1 (EGNOS)
Airport Identifier	ESNZ
Runway	12
Runway Letter	0 (None)
Approach Performance Designator	0
Route Indicator	Z
Reference Path Data Selector	0
Reference Path Identifier	E12A
LTP/FTP Latitude	631155.7265N
LTP/FTP Longitude	0142845.9245E
LTP/FTP Ellipsoidal Height (metres)	395.7
FPAP Latitude	631120.5400N
Delta FPAP Latitude (seconds)	-35.1865
FPAP Longitude	0143135.4010E
Delta FPAP Longitude (seconds)	169.4765
Threshold Crossing Height	50.0
TCH Units Selector	0 (feet)
Glidepath Angle (degrees)	3.00
Course Width (metres)	105.00
Length Offset (metres)	112
HAL (metres)	40.0
VAL (metres)	35.0

Output data

Data Block	10 1A 0E 13 05 0C D0 00 01 32 31 05 9D 3A 1F 1B C9 C1 36 06 75 23 1B ED FE 09 2C 05 F4 01 2C 01 64 0E C8 AF 77 96 D5 6B
Calculated CRC Value	7796D56B
Supplied CRC Value	7796D56B
Comparison Result	OK