

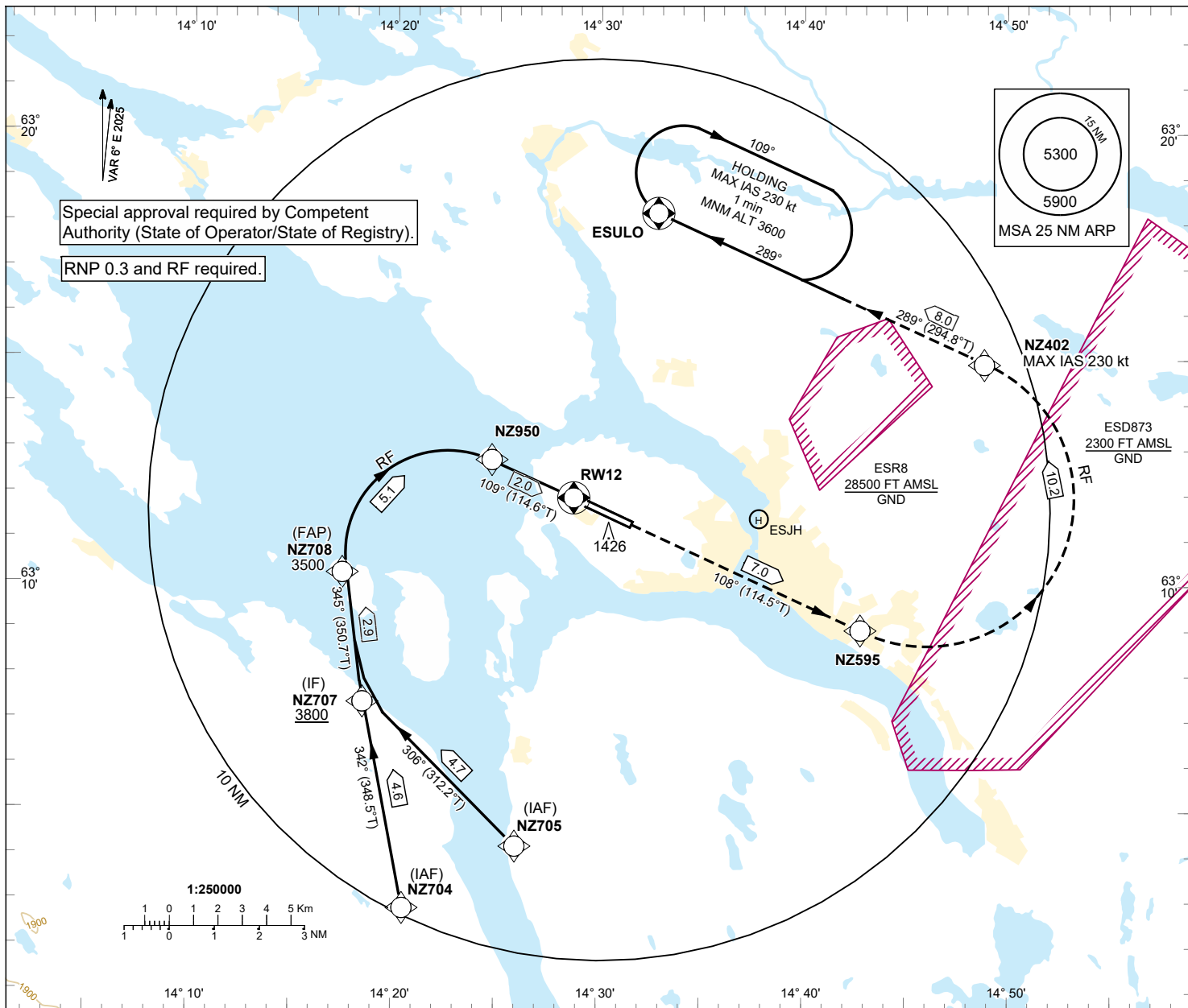
ÄRE ÖSTERSUND
RNP y RWY 12 (AR)

INSTRUMENT APPROACH CHART - ICAO

THR ELEV 1194.0 ft AD ELEV 1234 ft
OCH are related to THR
Circling OCH are related to AD ELEV
BRG are MAG (TRUE)
ALT, HGT and ELEV in ft

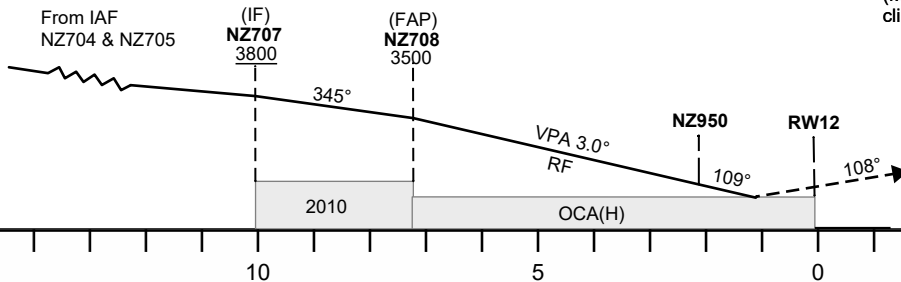
ÖSTERSUND TOWER 135.655

NA BELOW -25°C VPA EXCEEDS 3.5° ABOVE 59° C



TA 6000 ft AMSL RDH 50.0 ft

MISSED APPROACH:
Climb to NZ955. Turn left via RF leg to NZ402 (MAX IAS 230 kt) and continue to ESULO climbing to 3600 and join ESULO holding.



Cat of ACFT	OCA (OCH)			
	A	B	C	D
RNP (0.3)	1464(270)	1486(292)	1505(311)	1523(329)

Final approach							
Dist to RWY12	NM	7	6	5	4	3	2
ALT	ft	3473	3155	2836	2518	2200	1881

CHANGE: Coding

ÅRE ÖSTERSUND
RNP Y RWY 12 (AR)

RNP Y RWY 12 (AR) via NZ704

Path Term	Waypoint Identifier	Fly-over	Course °M(°T)	Dist (NM)	Turn Dir	Rest Alts (ft/AMSL)	Speed Limits (kt)	VPA/RDH (°/ft)	Arc Radius (NM)	Arc Centre	Navigation Specification
IF	NZ704	-	-	-	-	-	-	-	-	-	RNP 1.0
TF	NZ707	-	342°(348.5°T)	4.6	-	+3800	-	-	-	-	RNP 1.0
TF	NZ708	-	345°(350.7°T)	2.9	-	@3500	-185	-	-	-	RNP 0.3
RF	NZ950	-	-	5.1	R	-	-	-3	2.349	NZ709	RNP 0.3
TF	RW12	Y	109°(114.6°T)	2.0	-	@1244	-	-3/50	-	-	RNP 0.3
TF	NZ595	-	108°(114.5°T)	7.0	-	-	-	-	-	-	RNP 1.0
RF	NZ402	-	-	10.2	L	-	-230	-	3.261	NZ401	RNP 1.0
TF	ESULO	Y	289°(294.8°T)	8.0	-	+3600	-	-	-	-	RNP 1.0
HM	ESULO	-	289°(295.0°T)	-	R	+3600	-230	-	-	-	RNAV 1

RNP Y RWY 12 (AR) via NZ705

Path Term	Waypoint Identifier	Fly-over	Course °M(°T)	Dist (NM)	Turn Dir	Rest Alts (ft AMSL)	Speed Limits (kt)	VPA/RDH (°/ft)	Arc Radius NM	Arc Centre	Navigation Specification
IF	NZ705	-	-	-	-	-	-	-	-	-	RNP 1.0
TF	NZ707	-	306°(312.2°T)	4.7	-	+3800	-	-	-	-	RNP 1.0
TF	NZ708	-	345°(350.7°T)	2.9	-	@3500	-185	-	-	-	RNP 0.3
RF	NZ950	-	-	5.1	R	-	-	-3	2.349	NZ709	RNP 0.3
TF	RW12	Y	109°(114.6°T)	2.0	-	@1244	-	-3/50	-	-	RNP 0.3
TF	NZ595	-	108°(114.5°T)	7.0	-	-	-	-	-	-	RNP 1.0
RF	NZ402	-	-	10.2	L	-	-230	-	3.261	NZ401	RNP 1.0
TF	ESULO	Y	289°(294.8°T)	8.0	-	+3600	-	-	-	-	RNP 1.0
HM	ESULO	-	289°(295.0°T)	-	R	+3600	-230	-	-	-	RNAV1