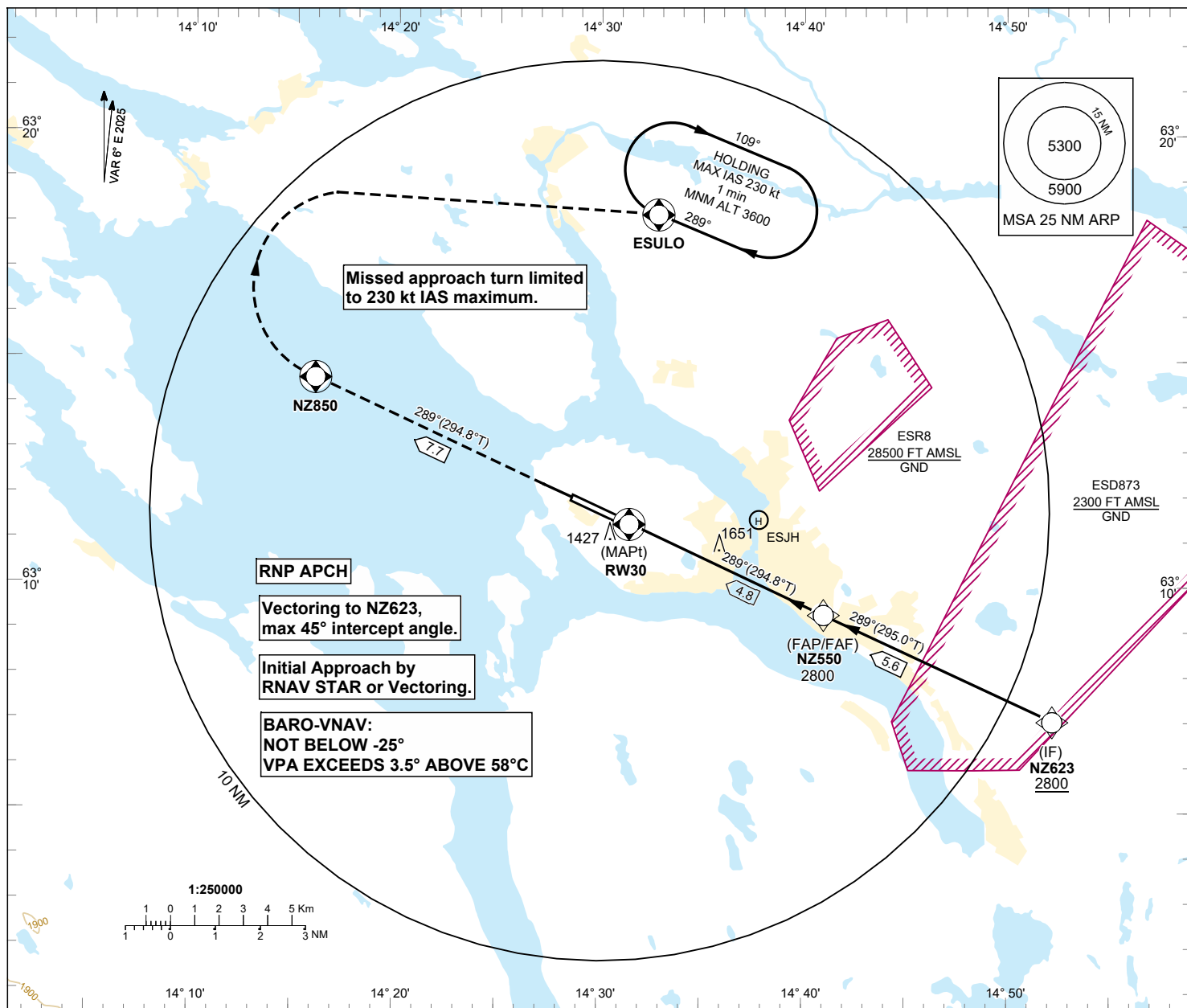


INSTRUMENT  
APPROACH  
CHART - ICAO

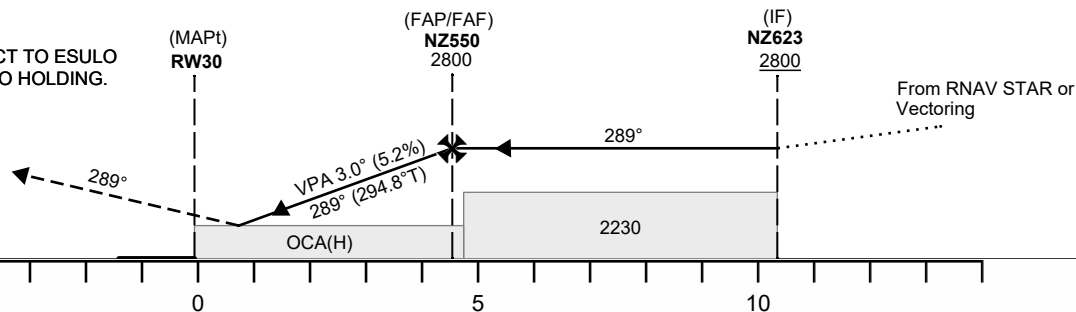
THR ELEV 1234 ft AD ELEV 1234 ft  
OCH are related to THR  
Circling OCH are related to AD ELEV  
BRG are MAG (TRUE)  
ALT, HGT and ELEV in ft

ÖSTERSUND TOWER 135.655



TA 6000 ft AMSL RDH 50.0 ft

MISSED APPROACH:  
CLIMB TO NZ850 ON COURSE 289°.  
TURN RIGHT (Max IAS 230 kt) DIRECT TO ESULO  
CLIMBING TO 3600 AND JOIN ESULO HOLDING.



Cat of ACFT	OCA(OCH)			
	A	B	C	D
LPV	1563(329)	1573(339)	1583(349)	1593(359)
LNAV/VNAV	1787(553)	1797(563)	1807(573)	1817(583)
LNAV	1910(680)	1910(680)	1910(680)	1910(680)

Final approach	Distance FAF-MAPT 4.8 NM						
	Dist to RW30	NM	2	3	4		
ALT	ft	1920	2239	2557			
GS	kt	80	100	120	140	160	180
ROD	ft/min	425	530	635	745	850	955

CHANGE: Totally revised. VAR. LPV. ESD873 new.

**ÄRE ÖSTERSUND**  
**RNP RWY 30**

**RNP RWY 30**

Path Term	Waypoint Identifier	Fly-over	Course °M(°T)	Dist (NM)	Turn Dir	Rest Alts (ft AMSL)	Speed Limits (kt)	VPA/RDH (°/ft)	Rec Navaid	Navigation Specification
IF	NZ623	-	-	-	-	+2800	-	-	-	RNP APCH
TF	NZ550	-	289°(295.0°T)	5.6	-	@2800	-	-	-	RNP APCH
TF	RW30	Y	289°(294.8°T)	4.8	-	@1284	-	-3.00/50	-	RNP APCH
CF	NZ850	Y	289°(294.8°T)	7.7	-	-	-	-	OSS	RNP APCH
DF	ESULO	Y	-	-	R	+3600	-230	-	-	RNP APCH
HM	ESULO	-	289°(295.0°T)	-	R	+3600	-230	-	-	RNAV 1

## FAS Data Block

## RNP RWY 30

## Input data

Operation Type	0
SBAS Provider	1 (EGNOS)
Airport Identifier	ESNZ
Runway	30
Runway Letter	0 (None)
Approach Performance Designator	0
Route Indicator	
Reference Path Data Selector	0
Reference Path Identifier	E30A
LTP/FTP Latitude	631122.0020N
LTP/FTP Longitude	0143128.3680E
LTP/FTP Ellipsoidal Height (metres)	407.8
FPAP Latitude	631155.7265N
Delta FPAP Latitude (seconds)	33.7245
FPAP Longitude	0142845.9245E
Delta FPAP Longitude (seconds)	-162.4435
Threshold Crossing Height	50.0
TCH Units Selector	0 (feet)
Glidepath Angle (degrees)	3.00
Course Width (metres)	105.00
Length Offset (metres)	0
HAL (metres)	40.0
VAL (metres)	50.0

## Output data

Data Block	10 1A 0E 13 05 1E 00 00 01 30 33 05 24 33 1E 1B E0 B6 3B 06 EE 23 79 07 01 E9 0A FB F4 01 2C 01 64 00 C8 FA C5 62 C4 E4
Calculated CRC Value	C562C4E4
Supplied CRC Value	C562C4E4
Comparison Result	OK