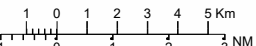
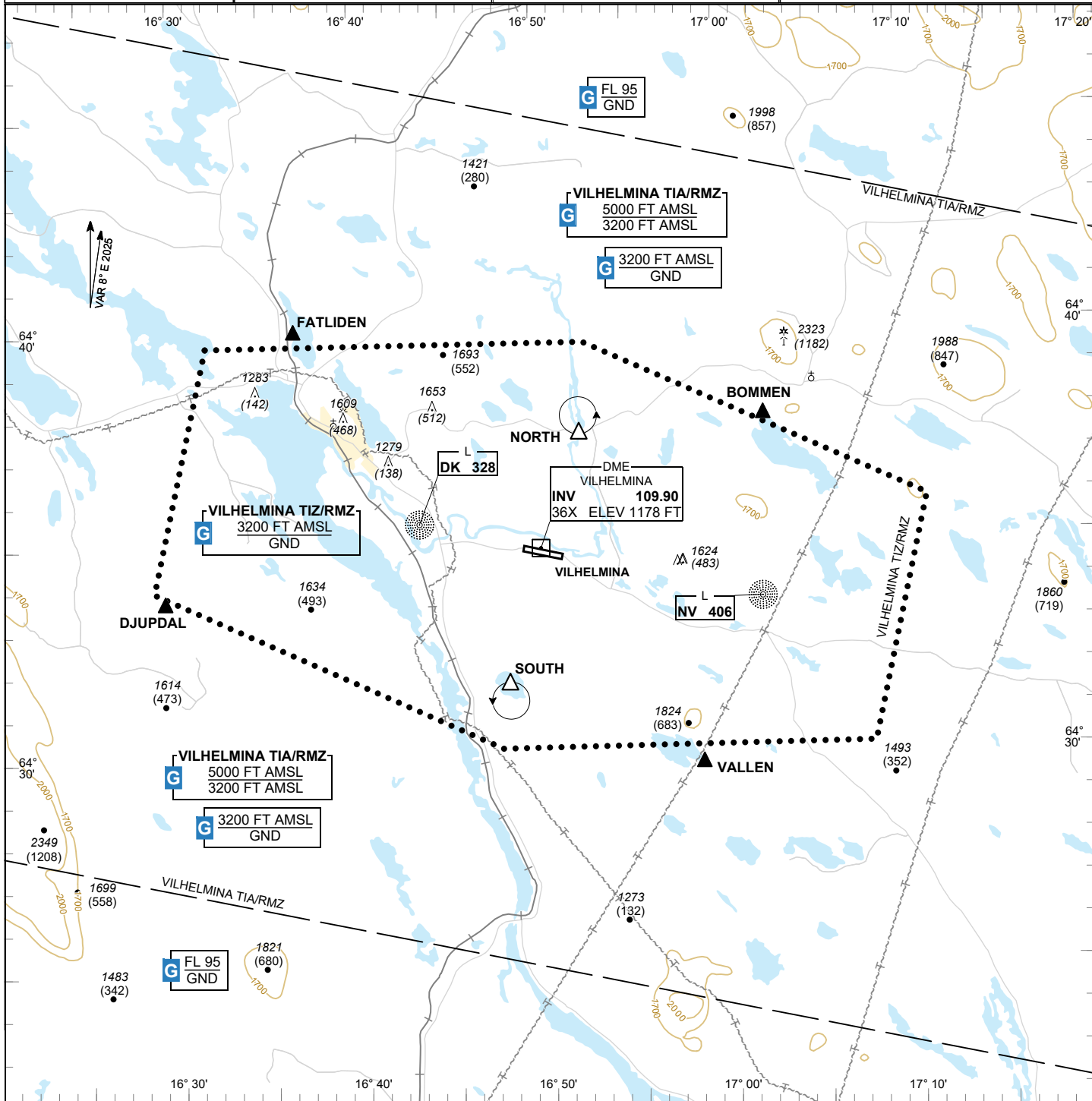


VISUAL APPROACH CHART - ICAO 1:250000 	AD ELEV 1141 FEET ELEV and ALT in ft HGT in ft above AD ELEV TA 5000 AMSL	VILHELMINA INFORMATION 122.555	VILHELMINA SWEDEN
--	--	--	--------------------------



Communication failure NIL	<table border="1" style="width:100%; border-collapse: collapse;"> <thead> <tr> <th style="text-align: left;">RWY NR</th> <th style="text-align: left;">THR ELEV</th> <th style="text-align: left;">PAPI (MEHT)</th> </tr> </thead> <tbody> <tr> <td>10</td> <td>1139 ft</td> <td>Left/3.00° (22 ft)</td> </tr> <tr> <td>28</td> <td>1139.2 ft</td> <td>Left/3.00° (49 ft)</td> </tr> </tbody> </table>	RWY NR	THR ELEV	PAPI (MEHT)	10	1139 ft	Left/3.00° (22 ft)	28	1139.2 ft	Left/3.00° (49 ft)	Entry / exit point FATLIDEN 644001N 0163640E BOMMEN 643753N 0170214E VALLEN 642945N 0165829E DJUPDAL 643342N 0162922E	Holding NORTH: Hold north of bridge over Vojmän, north of point 643732N 0165209E SOUTH: Hold at lake Skärsjön, south of point 643142N 0164802E
RWY NR	THR ELEV	PAPI (MEHT)										
10	1139 ft	Left/3.00° (22 ft)										
28	1139.2 ft	Left/3.00° (49 ft)										
Remark NIL	Legend See GEN 2.3											

CHANGE: VAR, TIA/TIZ, Entry/Exit points new. OBST. Editorial