

AIP SVERIGE/SWEDEN

**INSTRUMENT
APPROACH
CHART - ICAO**

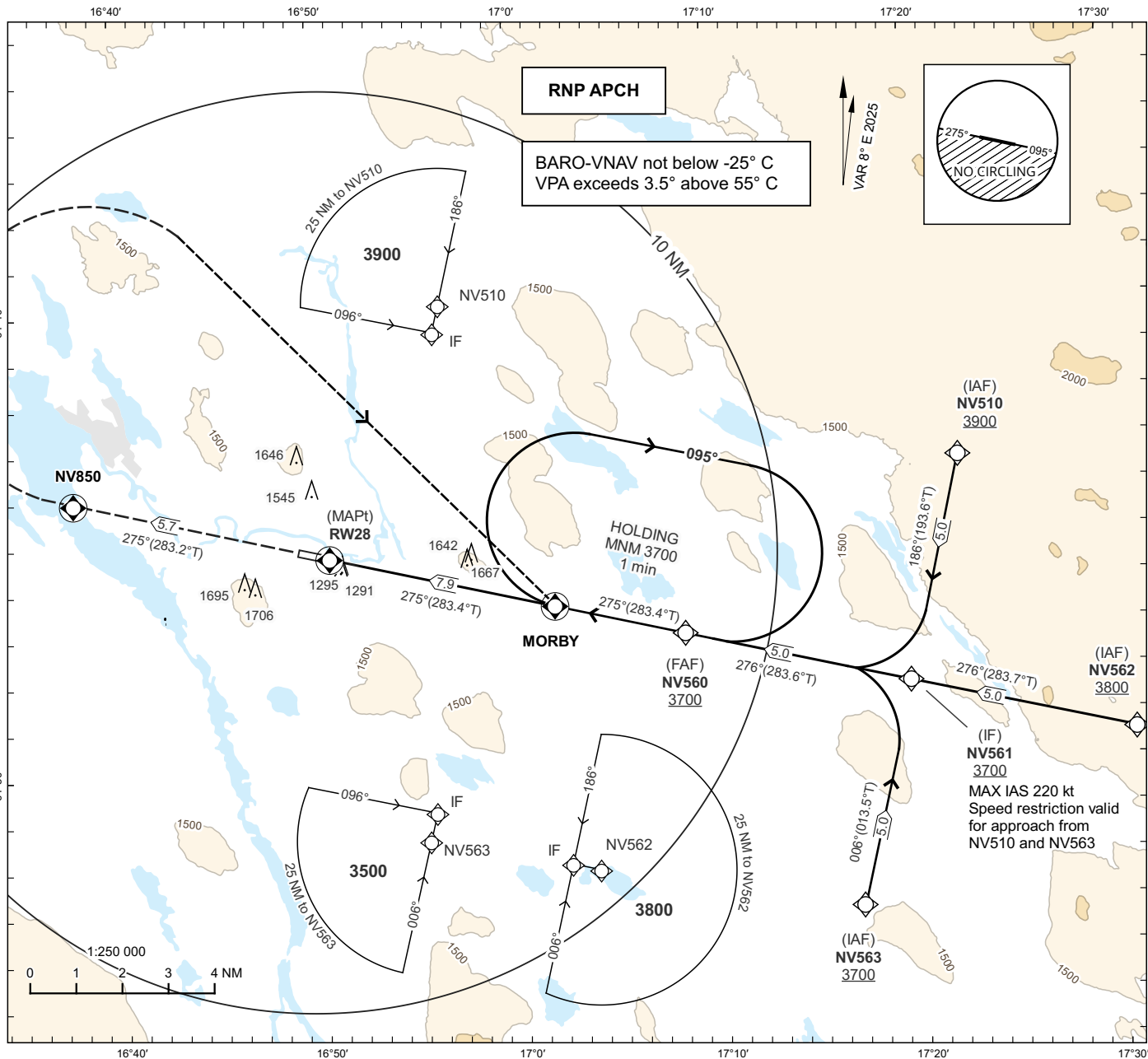
THR ELEV 1139.2 ft AD ELEV 1141 ft

OCH are related to THR.
Circling OCH are related to AD ELEV.
BRG are MAG (True).
ALT, HGT and ELEV in ft.

VILHELMINA INFORMATION 122.555

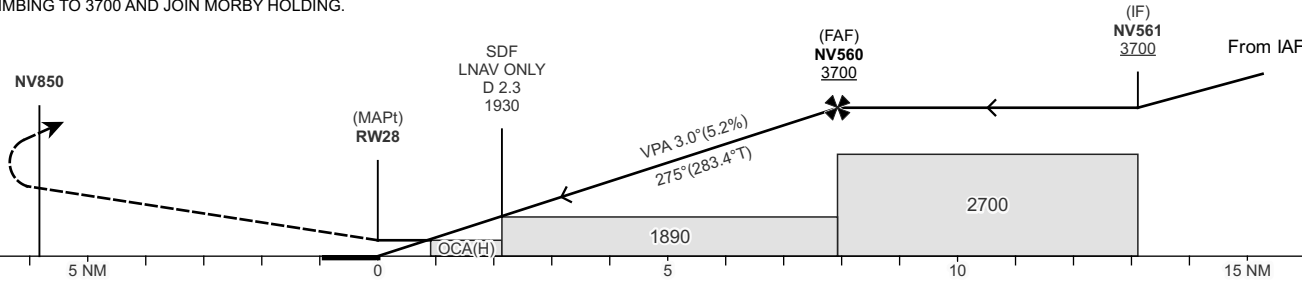
**VILHELMINA
RNP RWY 28**

EGNOS CH 42200 E 28A



TA 5000 ft AMSL RDH 50.0 ft

MISSED APPROACH:
CLIMB TO NV850. TURN RIGHT TO MORBY
CLIMBING TO 3700 AND JOIN MORBY HOLDING.



CAT of ACFT	OCA(H)			Final Approach	Distance FAF-MAPt 7.9 NM						
	A	B	C		Dist to RW28	NM	2	3	4	5	6
LPV	1421(282)	1434(295)	1446(307)	ALT	ft	1830	2150	2470	2790	3100	3420
LNAV/VNAV	1518(379)	1530(391)	1549(410)	GS	kt	80	100	120	140	160	
LNAV	1710 (580)			Rate of descent	ft/min	425	530	635	745	850	
Circling N RWY	1840(700)	1950(810)	2070(930)								

CHANGE: VAR, OBST, IAF new, FAF new, FAF new, BARO-VNAV new, circling new, TAA, MOCA, OCA(H), table, coding, editorial.

RNP RWY 28 via NV510

Path Term	Waypoint Identifier	Fly-over	Course °M(°T)	Dist (NM)	Turn Dir	Altitude	Speed Limits (kt)	VPA/RDH (°/ft)	Rec Navaid	Nav Spec
IF	NV510	-	-	-	-	+3900	-	-	-	RNP APCH
TF	NV561	-	186°(193.6°)	5.0	-	+3700	-220	-	-	RNP APCH

RNP RWY 28 via NV562

Path Term	Waypoint Identifier	Fly-over	Course °M(°T)	Dist (NM)	Turn Dir	Altitude	Speed Limits (kt)	VPA/RDH (°/ft)	Rec Navaid	Nav Spec
IF	NV562	-	-	-	-	+3800	-	-	-	RNP APCH
TF	NV561	-	276°(283.7°)	5.0	-	+3700	-	-	-	RNP APCH

RNP RWY 28 via NV563

Path Term	Waypoint Identifier	Fly-over	Course °M(°T)	Dist (NM)	Turn Dir	Altitude	Speed Limits (kt)	VPA/RDH (°/ft)	Rec Navaid	Nav Spec
IF	NV563	-	-	-	-	+3700	-	-	-	RNP APCH
TF	NV561	-	006°(013.5°)	5.0	-	+3700	-220	-	-	RNP APCH

Path Term	Waypoint Identifier	Fly-over	Course °M(°T)	Dist (NM)	Turn Dir	Altitude	Speed Limits (kt)	VPA/RDH (°/ft)	Rec Navaid	Nav Spec
IF	NV561	-	-	-	-	+3700	-	-	-	RNP APCH
TF	NV560	-	276°(283.6°)	5.0	-	+3700	-	-	-	RNP APCH
TF	RW28	Y	275°(283.4°)	7.9	-	@1189	-	-3.0/50	-	RNP APCH
TF	NV850	Y	275°(283.2°)	5.7	-	-	-	-	-	RNP APCH
DF	MORBY	Y	-	-	R	-	-	-	-	RNP APCH

ESNV Holding MORBY

Path Term	Waypoint Identifier	Fly-over	Course °M(°T)	Dist (NM)	Turn Dir	Altitude	Speed Limits (kt)	VPA/RDH (°/ft)	Rec Navaid	Nav Spec
HM	MORBY	Y	275°(283.4°)	-	R	+3700	-	-	-	RNP 1

FAS Data Block

RNP RWY 28

Input data

Operation Type	0
SBAS Provider	1 (EGNOS)
Airport Identifier	ESNV
Runway	28
Runway Letter	0 (None)
Approach Performance Designator	0
Route Indicator	
Reference Path Data Selector	0
Reference Path Identifier	E28A
LTP/FTP Latitude	643440.9570N
LTP/FTP Longitude	0165038.1305E
LTP/FTP Ellipsoidal Height (metres)	376.6
FPAP Latitude	643450.2015N
Delta FPAP Latitude (seconds)	9.2445
FPAP Longitude	0164905.9670E
Delta FPAP Longitude (seconds)	-92.1635
Threshold Crossing Height	50.0
TCH Units Selector	0 (feet)
Glidepath Angle (degrees)	3.00
Course Width (metres)	105.00
Length Offset (metres)	0
HAL (metres)	40.0
VAL (metres)	50.0

Output data

Data Block	10 16 0E 13 05 1C 00 00 01 38 32 05 7A C1 B6 1B 65 87 3A 07 B6 22 39 48 00 F9 2F FD F4 01 2C 01 64 00 C8 FA BF D6 9A 51
Calculated CRC Value	BFD69A51

Required Additional Data

ICAO Code	ES
LTP/FTP Orthometric Height (metres)	347.2