

**INSTRUMENT  
APPROACH  
CHART - ICAO**

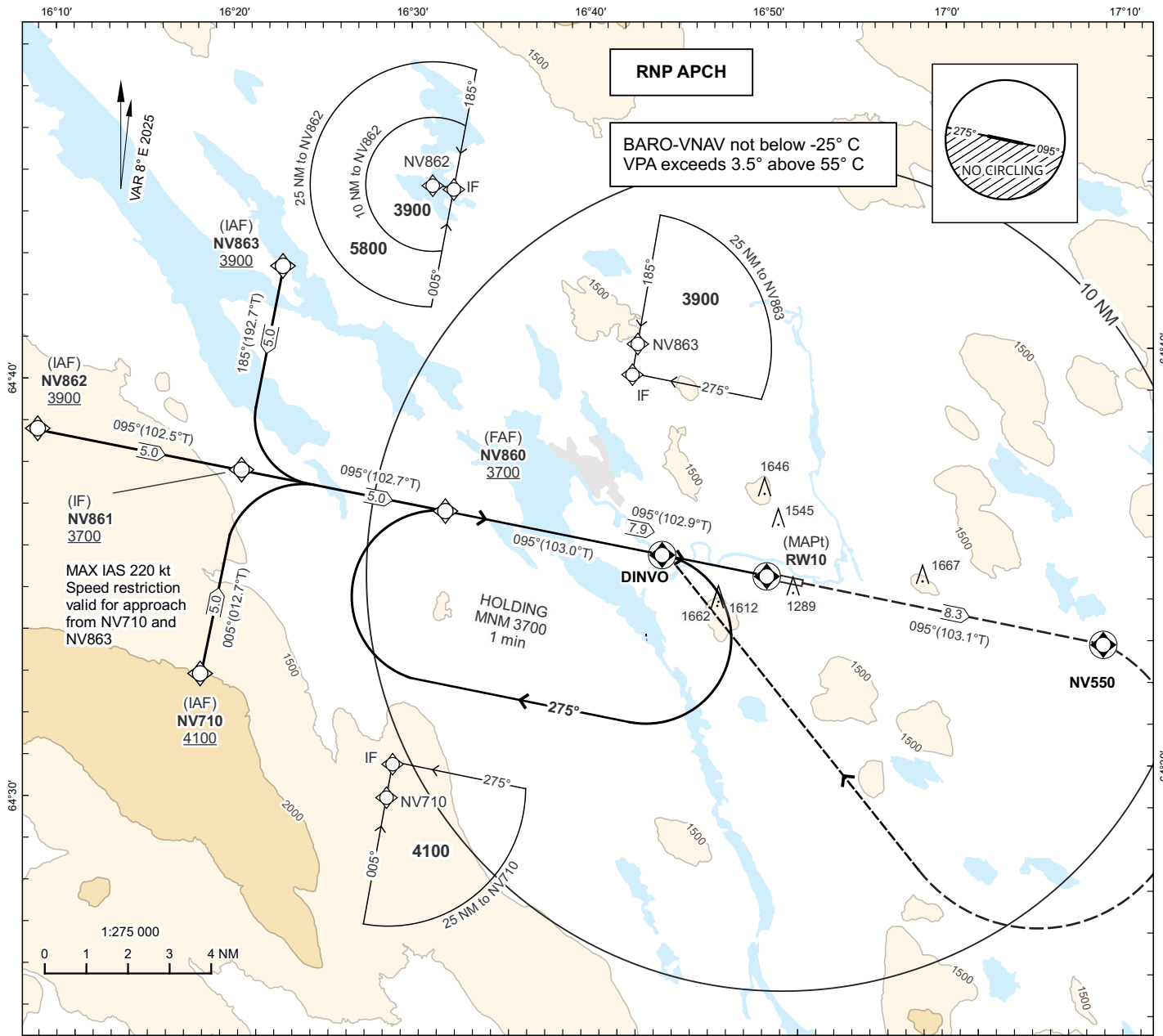
**THR ELEV 1139 ft AD ELEV 1141 ft**

OCH are related to THR.  
Circling OCH are related to AD ELEV.  
BRG are MAG (True).  
ALT, HGT and ELEV in ft.

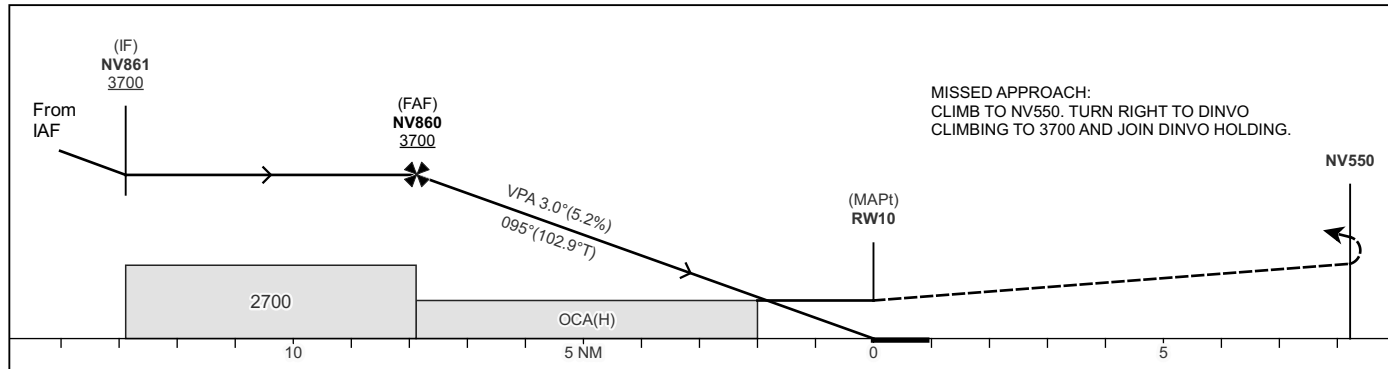
VILHELMINA INFORMATION 122.555

**VILHELMINA  
RNP RWY 10**

**EGNOS CH 94406 E 10A**



TA 5000 ft AMSL RDH 50.0 ft



CAT of ACFT	OCA(H)			Final Approach	Distance FAF-MAPt 7.9 NM						
	A	B	C		NM	7	6	5	4	3	2
LPV	1420(281)	1432(293)	1440(301)	ALT	ft	3420	3100	2790	2470	2150	1830
LNAV/VNAV	1664(525)	1664(525)	1665(526)	GS	kt	80	100	120	140	160	
LNAV	1670(540)			Rate of descent	ft/min	425	530	635	745	850	
Circling N RWY	1840(700)	1950(810)	2070(930)								

CHANGE: VAR, OBST, IAF new, FAF new, BARO-VNAV new, circling new, TAA, MOCA, OCA(H), table, coding, editorial.

## RNP RWY 10 via NV710

Path Term	Waypoint Identifier	Fly-over	Course °M(°T)	Dist (NM)	Turn Dir	Altitude	Speed Limits (kt)	VPA/RDH (°/ft)	Rec Navaid	Nav Spec
IF	NV710	-	-	-	-	+4100	-	-	-	RNP APCH
TF	NV861	-	005°(012.7°)	5.0	-	+3700	-220	-	-	RNP APCH

## RNP RWY 10 via NV862

Path Term	Waypoint Identifier	Fly-over	Course °M(°T)	Dist (NM)	Turn Dir	Altitude	Speed Limits (kt)	VPA/RDH (°/ft)	Rec Navaid	Nav Spec
IF	NV862	-	-	-	-	+3900	-	-	-	RNP APCH
TF	NV861	-	095°(102.5°)	5.0	-	+3700	-	-	-	RNP APCH

## RNP RWY 10 via NV863

Path Term	Waypoint Identifier	Fly-over	Course °M(°T)	Dist (NM)	Turn Dir	Altitude	Speed Limits (kt)	VPA/RDH (°/ft)	Rec Navaid	Nav Spec
IF	NV863	-	-	-	-	+3900	-	-	-	RNP APCH
TF	NV861	-	185°(192.7°)	5.0	-	+3700	-220	-	-	RNP APCH

Path Term	Waypoint Identifier	Fly-over	Course °M(°T)	Dist (NM)	Turn Dir	Altitude	Speed Limits (kt)	VPA/RDH (°/ft)	Rec Navaid	Nav Spec
IF	NV861	-	-	-	-	+3700	-	-	-	RNP APCH
TF	NV860	-	095°(102.7°)	5.0	-	+3700	-	-	-	RNP APCH
TF	RW10	Y	095°(102.9°)	7.9	-	@1189	-	-3.0/50	-	RNP APCH
TF	NV550	Y	095°(103.1°)	8.3	-	-	-	-	-	RNP APCH
DF	DINVO	Y	-	-	R	+3700	-	-	-	RNP APCH

## ESNV Holding DINVO

Path Term	Waypoint Identifier	Fly-over	Course °M(°T)	Dist (NM)	Turn Dir	Altitude	Speed Limits (kt)	VPA/RDH (°/ft)	Rec Navaid	Nav Spec
HM	DINVO	Y	095°(103.0°)	-	R	+3700	-	-	-	RNP 1

## FAS Data Block

## RNP RWY 10

## Input data

Operation Type	0
SBAS Provider	1 (EGNOS)
Airport Identifier	ESNV
Runway	10
Runway Letter	0 (None)
Approach Performance Designator	0
Route Indicator	
Reference Path Data Selector	0
Reference Path Identifier	E10A
LTP/FTP Latitude	643450.2015N
LTP/FTP Longitude	0164905.9670E
LTP/FTP Ellipsoidal Height (metres)	376.7
FPAP Latitude	643439.1775N
Delta FPAP Latitude (seconds)	-11.0240
FPAP Longitude	0165055.7260E
Delta FPAP Longitude (seconds)	109.7590
Threshold Crossing Height	50.0
TCH Units Selector	0 (feet)
Glidepath Angle (degrees)	3.00
Course Width (metres)	105.00
Length Offset (metres)	0
HAL (metres)	40.0
VAL (metres)	50.0

## Output data

Data Block	10 16 0E 13 05 0A 00 00 01 30 31 05 B3 09 B7 1B 5E B7 37 07 B7 22 E0 A9 FF 7E 59 03 F4 01 2C 01 64 00 C8 FA D5 46 DB 5D
Calculated CRC Value	D546DB5D

## Required Additional Data

ICAO Code	ES
LTP/FTP Orthometric Height (metres)	347.3