

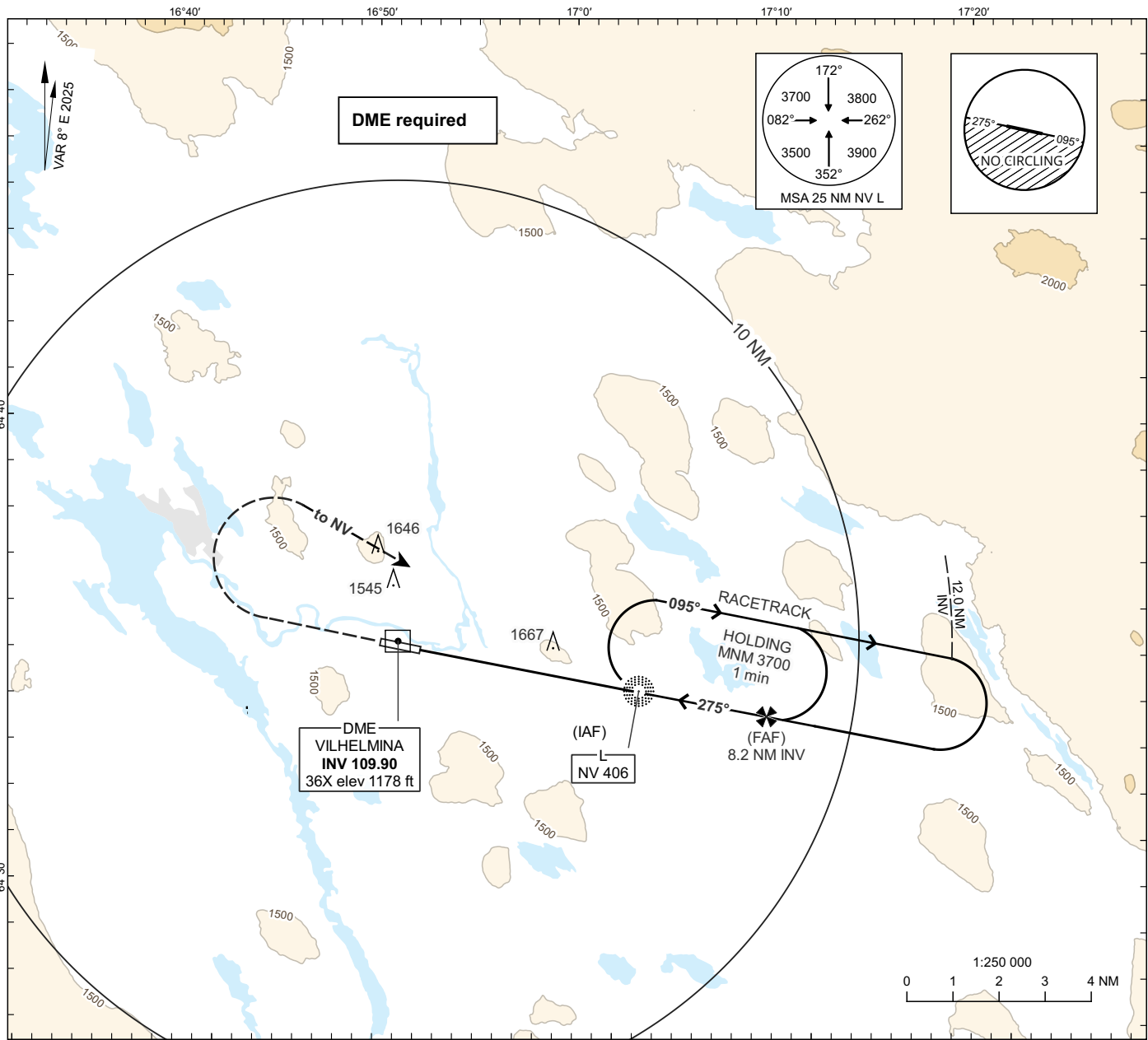
**INSTRUMENT
APPROACH
CHART - ICAO**

THR ELEV 1139.2 ft, AD ELEV 1141 ft

OCH are related to THR.
Circling OCH are related to AD ELEV.
BRG are MAG.
ALT, HGT and ELEV in ft.

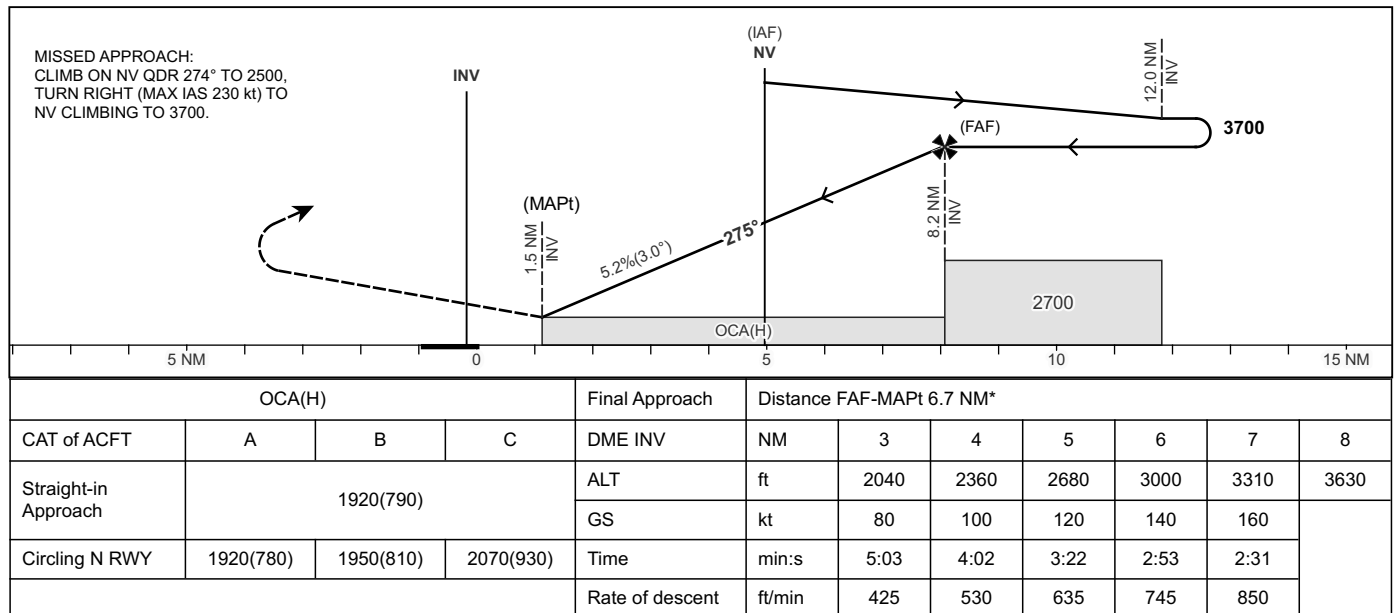
VILHELMINA INFORMATION 122.555

**VILHELMINA
NDB RWY 28**



TA 5000 ft AMSL

*Timing not authorized for defining the MAPt



CHANGE: VAR, OBST, DME added, MAX IAS, MSA, Racetrack, FAF, MAPt, MOCA, OCA(H), table, editorial.