

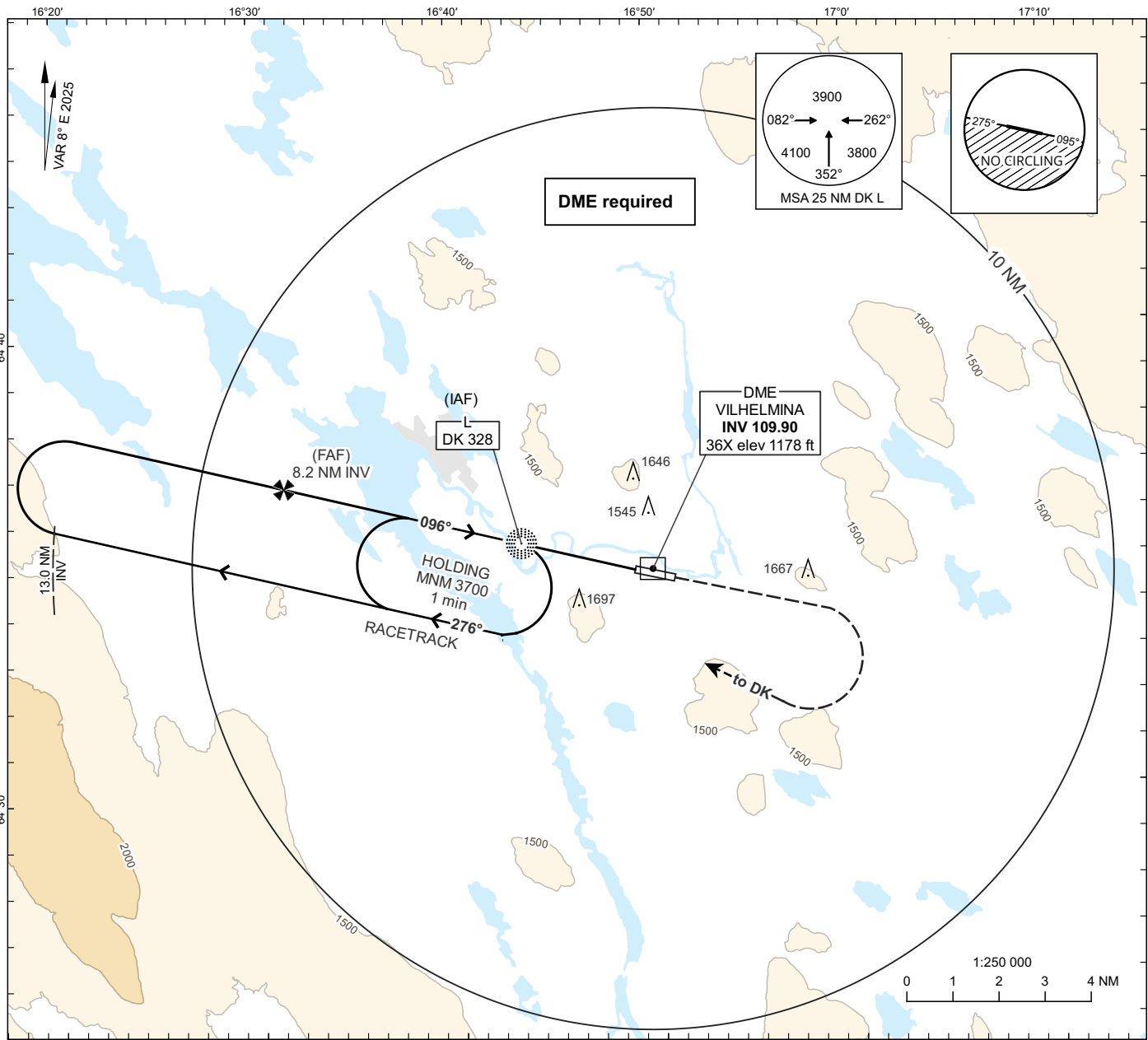
**INSTRUMENT
APPROACH
CHART - ICAO**

THR ELEV 1139 ft, AD ELEV 1141 ft

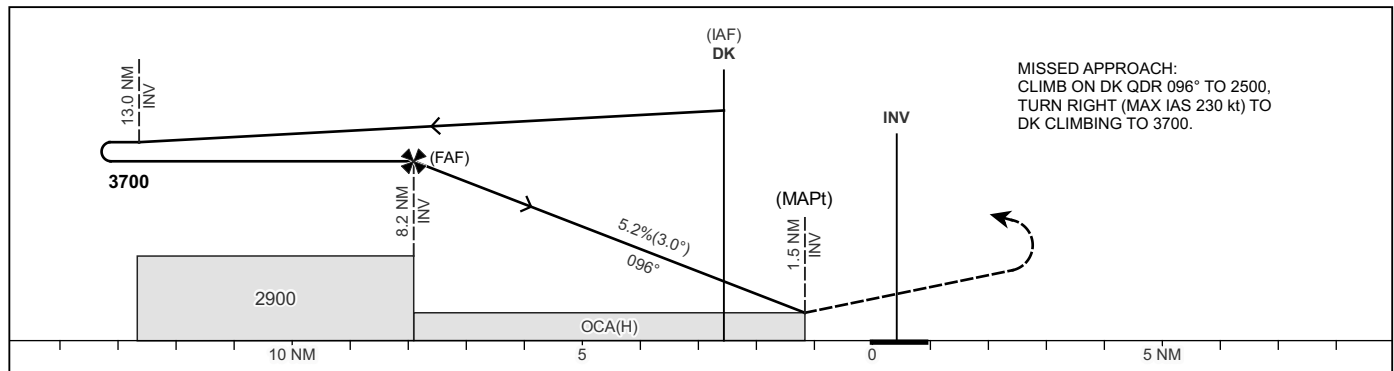
OCH are related to THR.
Circling OCH are related to AD ELEV.
BRG are MAG.
ALT, HGT and ELEV in ft.

VILHELMINA INFORMATION 122.555

**VILHELMINA
NDB RWY 10**



TA 5000 ft AMSL Final APCH line offset 1° *Timing not authorized for defining the MAPt



OCA(H)			Final Approach	Distance FAF-MAPt 6.7 NM*							
CAT of ACFT	A	B	DME INV	NM	8	7	6	5	4	3	
Straight-in Approach	1860(730)			ALT	ft	3630	3320	3000	2680	2360	2040
				GS	kt	80	100	120	140	160	
Circling N RWY	1860(720)	1950(810)	2070(930)	Time	min:s	5:03	4:02	3:22	2:53	2:31	
				Rate of descent	ft/min	425	530	635	745	850	

CHANGE: VAR, OBST, MAX IAS, MSA, Racetrack, FAF, MAPt, MOCA, OCA(H), table, editorial.